



to let

commercial

Unit 6 & 7 Cavendish Walk, Chesterfield.

Modern Retail Unit (866 sq ft)



ROY PETERS ESTATES

01246 272740 | 01246 236798

enquiries@roypeters.com

roypeters.com

Unit 6 & 7 Cavendish Walk

A self contained retail unit with an open main sales area extending to approximately 866 sq ft (80.5sq m). The shop benefits from a fantastic double frontage and is ideal for a variety of uses. There is ample free parking in a busy courtyard location in the centre of Bolsover.

Rent

£12,000 per annum plus vat

Accommodation

Sales area 866 sq ft

Location

Bolsover is a small tourist town on the outskirts of Chesterfield famous for its Castle. It is situated 18 miles from Sheffield, 26 miles from Nottingham and 56 miles from Manchester

Business Rates

Bolsover District Council .
Rateable Value 2019/20 - £12,250
Rates Payable - £4,680

Please contact Bolsover District Council directly to confirm any relief you may be entitled to.

Services

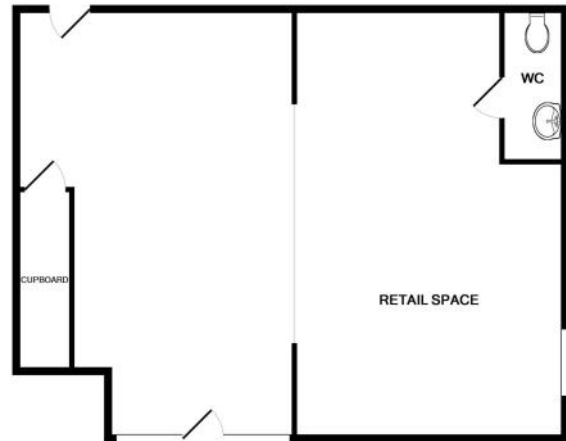
Mains water, electric, drainage are connected.

Lease Terms

Full repairing and insuring terms on long or short term.

VAT

All prices premiums and rents are quoted exclusive of VAT at the prevailing rate.



TOTAL APPROX. FLOOR AREA 866 SQ.FT. (80.5 SQ.M.)

Whilst every attempt has been made to ensure the accuracy of the floor plan contained here, measurements of doors, windows, rooms and any other items are approximate and no responsibility is taken for any error, omission, or mis-statement. This plan is for illustrative purposes only and should be used as such by any prospective purchaser. The services, systems and appliances shown have not been tested and no guarantee as to their operability or efficiency can be given.
Made with Metropix ©2019

MISREPRESENTATION ACT 1991

Roy Peters Estates (and their Joint Agents where applicable) for themselves and for the vendors or lessors of this property [or whom they act, give notice that:

- (i) these particulars are a general outline, [or the guidance of prospective purchasers or do not constitute the whole or any part of] an offer or contract;
- (ii) Roy Peters Estates cannot guarantee the accuracy of any description, dimensions, references to condition, necessary permissions [or use and occupation and other details contained herein and prospective purchasers or tenants must not rely on them as statements of fact or representations and must satisfy themselves as to their accuracy;
- (iii) no employee of Roy Peters Estates (and their Joint Agents where applicable) has any authority to make or give any representation or warranty to enter into any contract whatever in relation to the property;
- (iv) prices / rent quoted in these particulars may be subject to VAT in addition; and
- (v) Roy Peters Estates will not be liable, in negligence or otherwise, [or any loss arising from the use of the particulars.



Viewing

Strictly by prior appointment with the sole agent
Roy Peters Estates

Roy Peters Estates

01246 272740 | 01246 236798
enquiries@roypeters.com

