



Otter Croft



Chulmleigh 1.7 miles Eggesford Station 1 mile South Molton 10 miles Crediton 13 miles

An individual, detached bungalow with parking and garden.

- 2 Double Bedrooms
- Living Room
- Kitchen
- Family Bathroom
- Parking
- Garden
- Council Tax Band 'C'
- Freehold
- NO ONWARD CHAIN

Guide Price £250,000

Situation

Located in the heart of the Taw Valley, with no near neighbours, Otter Croft is surrounded by beautiful open countryside and woodland. The nearest settlement is the popular town of Chulmleigh (1.7 miles). Chulmleigh offers an excellent range of amenities, including; a health centre, dental surgery, newsagent, Post Office, bakery, pubs, café, as well as other independent and artisan shops and businesses. Schooling from primary to secondary level is available at the highly regarded primary and academy schools. There is an 18 hole golf course, cricket club and sports centre. The larger town's of South Molton and Crediton are approximately 10 miles to the north, and 13 miles to the south, respectively. The cathedral city of Exeter is approximately 23 miles to the south. A rail link between Barnstaple and Exeter is available via Eggesford Station, approximately 1 mile away and high speed rail links to London Paddington are available from Exeter and Tiverton Parkway.

Description

Otter Croft's elevated position allow for magnificent views over river meadows, the River Taw and the picturesque countryside beyond. Although the property occupies a rural setting, the boundary conveniently borders the A377, a lesser-used arterial route between Barnstaple and Exeter, allowing quick access to local amenities. Built in the 1990's, Otter Croft is a two bedroom, detached bungalow offering well considered accommodation and a southerly aspect.

Accommodation

The part glazed front door opens into the HALLWAY, with space for hanging coats, large storage cupboard, utility cupboard with plumbing for white goods and doors to all principle accommodation. The LIVING ROOM, is double aspect, with a wealth of

space for sitting and dining and enjoys outstanding views through the double doors, separated by a breakfast bar from the open KITCHEN, fitted with a range of modern base units, contrasting worktop and matching wall units, stainless steel sink/drainer, inset Whirlpool electric hob/hood over, inset stainless steel fan/oven, space for American style fridge/freezer.

There are TWO DOUBLE bedrooms, The master bedroom and a smaller double room, both enjoying southerly views.. The family bathroom comprises a white suite; panelled bath with shower over, pedestal basin and WC.

Outside

Behind the bungalow is a pleasant, private and level garden, mainly gravelled, with paved patio and post and rail fencing, allowing for unobstructed views. To the left of the bungalow, is a large garden shed and parking for multiple vehicles.

Services

Mains electricity, private water supply (via borehole) and private drainage (Sewage treatment plant). Oil fired central heating via radiators. Full double glazing throughout. Mobile coverage from all major networks (Ofcom). Standard and ultrafast broadband available (Ofcom).

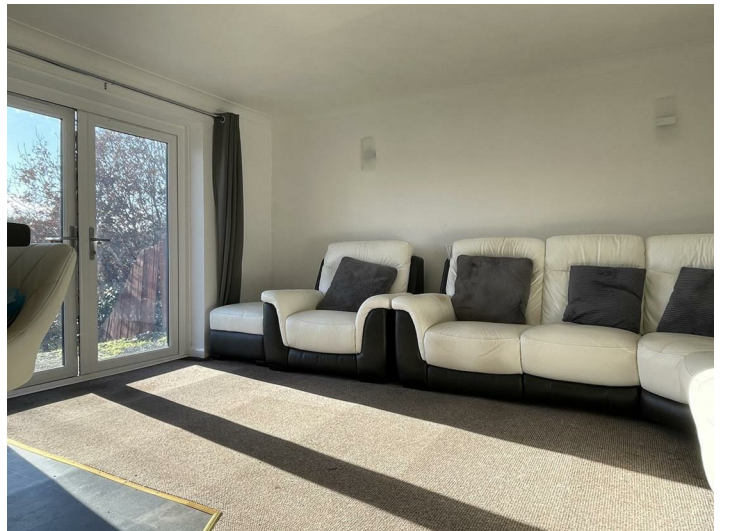
Viewing

Strictly by confirmed prior appointment please through the sole selling agents, Stags on: 01769 572 263.

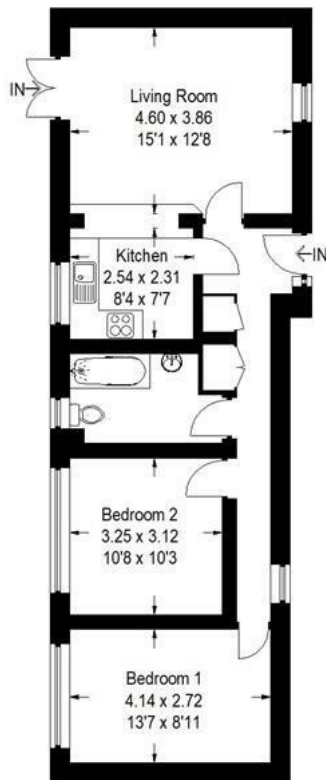
Directions

Otter Croft is located south of the small town of Chulmleigh and on the southern side of the A377, between Leigh Cross and Eggesford Station. Please be aware, the postcode indicates the property is 0.2 of a mile north of its actual location but on the same road (A377).

What3words /// headboard.oppose.skidding



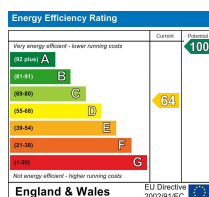
Approximate Gross Internal Area = 66 sq m / 710 sq ft



Otter Croft

Illustration for identification purposes only, measurements are approximate, not to scale.
FloorplansUsketch.com © 2023 (ID928064)

IMPORTANT: Stags gives notice that: 1. These particulars are a general guide to the description of the property and are not to be relied upon for any purpose. 2. These particulars do not constitute part of an offer or contract. 3. We have not carried out a structural survey and the services, appliances and fittings have not been tested or assessed. Purchasers must satisfy themselves. 4. All photographs, measurements, floorplans and distances referred to are given as a guide only. 5. It should not be assumed that the property has all necessary planning, building regulation or other consents. 6. Whilst we have tried to describe the property as accurately as possible, if there is anything you have particular concerns over or sensitivities to, or would like further information about, please ask prior to arranging a viewing.



29 The Square, South Molton, EX36 3AQ

01769 572263

south-molton@stags.co.uk

stags.co.uk