



47 Marsham Street, Westminster  
London SW1P

GARTON JONES.COM



47 Marsham Street, Westminster  
London, SW1P

GARTON JONES.COM

49 Marsham Street Sales +44 (0) 20 7340 0480  
London westminster@gartonjones.com  
SW1P 3DP www.gartonjones.com

£923 Per Week

A bright and spacious 3 bedroom located on the 5th floor (lift) of this popular block in the heart of Westminster. The property is very bright and offers a dual aspect open plan reception room with modern integrated kitchen and access to private balcony. There are 3 double bedrooms (the 3rd bedroom has sliding doors to the reception so would also make an ideal study) and 2 bathrooms with the master offering an en-suite bathroom. Additionally there is wood flooring, good storage throughout and a secure underground parking space. Romney House you will also have the use of a 24 hour concierge and a well-equipped gymnasium. Marsham Street is well located for access to the renowned local landmarks which include the Houses of Parliament, Westminster Abbey and the Tate Britain Gallery. The local transport links of Victoria Station is nearby providing mainline UK services including the Gatwick Express as well as the underground services of Victoria, Pimlico, St James Park and Westminster. The area has an abundance of amenities such as Sainsbury's, Waitrose, Marks & Spencer's, and a Curzon Cinema plus following on from the extensive regeneration of Victoria street a selection of many new restaurants to compliment existing ones such as Osteria dell'Angolo, The Cinnamon Club and many more. Garton Jones are located on site within the development so are readily available to assist with the property.

\*\*Please note that the furniture may differ to that shown in the current photos

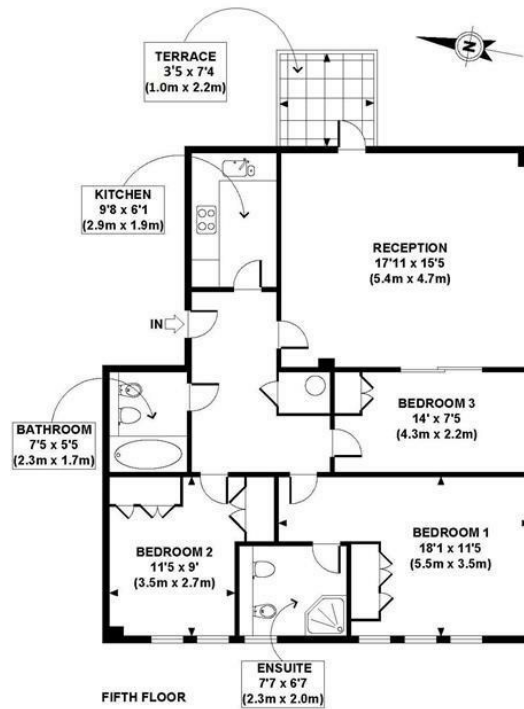
Deposit: 5 Weeks  
Council Tax Band G (London Borough of Westminster)  
Minimum Term: 6 Months  
EPC Rating D (61)

- 3 Bedroom Apartment
- 5th Floor (Lift)
- Reception Room
- Open Plan Modern Integrated Kitchen
- 2 Bathrooms (1 En-Suite)
- Private Balcony
- Available: 12th July 2024
- 2 Secure Underground Parking Spaces (Tandem Bay)
- 24 Hour Concierge & Residents Gym (\*\*online booking is required)
- Close to Local Amenities Including Shops, Restaurants & Transport Links



EPC certificate available on request.

ROMNEY HOUSE



APPROX. GROSS INTERNAL FLOOR AREA 946 SQ FT / 88 SQ M  
Floorplans are for identification and guideline purposes only, not to scale.  
Compliant with RICS code of measuring practice.

