



Rutherford Street, Westminster
London SW1P

GARTONJONES.COM



Rutherford Street, Westminster
London, SW1P

GARTON JONES.COM

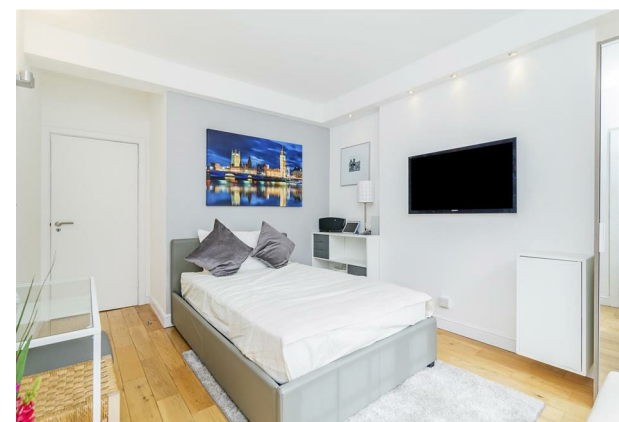
49 Marsham Street Lettings:
London +44 (0) 20 7340 0480
SW1P 3DP westminster@gartonjones.com
www.gartonjones.com

£450 Per Week

A well presented studio apartment to rent on the 2nd floor (walk up) of this small secure development in the heart of Westminster. The apartment is offered furnished and comprises of a separate integrated kitchen, reception room with a double bed and a modern shower room. The surrounding area offers an array of iconic landmarks which include the Houses of Parliament and Westminster Abbey. The local transport links of Victoria Station is nearby providing mainline UK services including the Gatwick Express as well as the underground services of Victoria, Pimlico, St James Park and Westminster. The area has an abundance of amenities and restaurants such as The Vincent Rooms, The Cinnamon Club, the Ivy Bar and Grill and Yaatra based in the Old Westminster Fire Station. You are just a short walk away from the Chelsea College of Arts and St Johns Smith Square Concert Halls offering a variety of classical musical performances. Available to view through our Westminster office located close at 49 Marsham Street, SW1P 3DP just moments from the property.

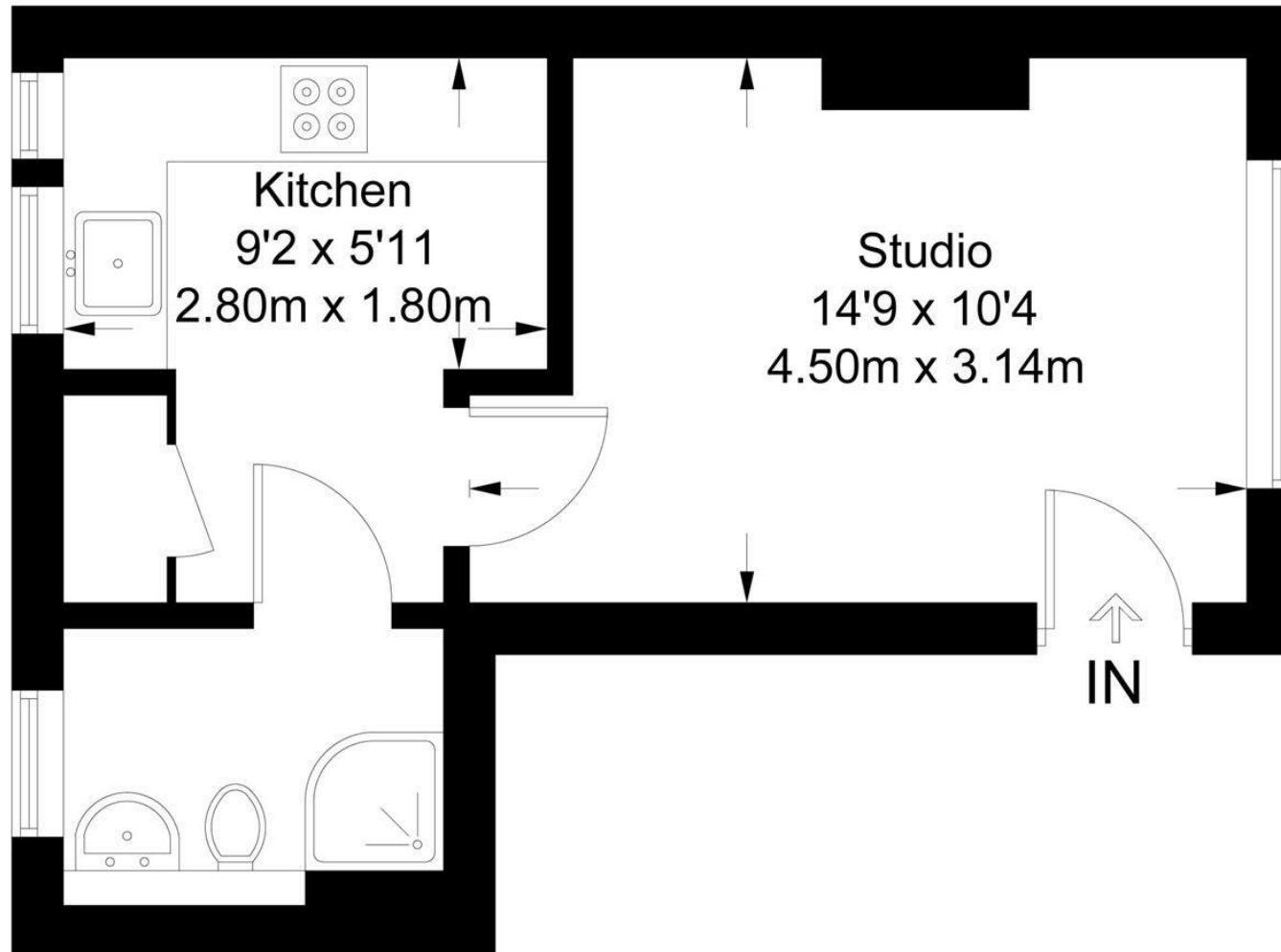
Council Tax Band C (London Borough of Westminster)
Minimum Term 12 Months
5 Weeks Deposit
EPC Rating: D (55)

- Beautifully Presented Studio Apartment
- 2nd Floor
- Reception Room / Bedroom
- Modern Shower Room
- Communal Water Included In The Rent
- Close To Selection of Amenities
- Available: 25th February 2026
- Furnished
- Moments From The Transport Links Westminster, St James Park And Victoria



Carey Mansions

Approximate Gross Internal Area = 275 sq ft / 25.6 sq m



Not to scale, for guidance only and must not be relied upon as a statement of fact.
All measurements and areas are approximate only and have been prepared in
accordance with the current edition of the RICS Code of Measuring Practice.

