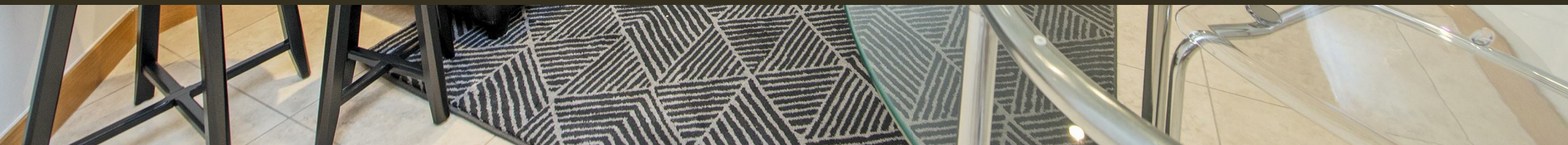




19 Page Street, Westminster
London SW1P

GARTONJONES.COM



19 Page Street, Westminster
London, SW1P

GARTON JONES.COM

49 Marsham Street Lettings:
London SW1P 3DP +44 (0) 20 7340 0480
westminster@gartonjones.com
www.gartonjones.com

£600 Per Week

A well-presented 1 double bedroom apartment available to let overlooking the historic St John's Gardens, in this popular modern development in Westminster, close to the River Thames and Houses of Parliament. This furnished property offers living space of approx. 512 square feet (47.5sq.m) and further benefits from an open plan reception room with an integrated kitchen, a bathroom, good storage throughout. Residents of Neville House have a 24 hour concierge service. Page Street is extremely convenient for access to many of the renowned local landmarks which include the Houses of Parliament and Westminster Abbey. The local transport links of Victoria Station is nearby providing mainline UK services including the Gatwick Express as well as the underground services of Victoria, Pimlico, St James Park and Westminster. The area has an abundance of amenities and restaurants such as The Vincent Rooms, The Cinnamon Club, the Ivy Bar and Grill and Yaatra based in the Old Westminster Fire Station. You are just a short walk away from the Chelsea College of Arts and St Johns Smith Square Concert Halls offering a variety of classical musical performances.

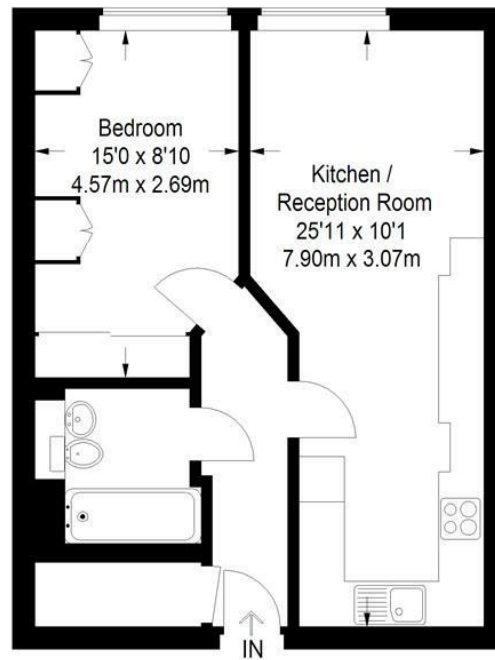
Minimum Term 12 Months
Deposit 5 Weeks
Council Tax Band G (London Borough of Westminster)
EPC Rating: 84 (B)

- 1 Bedroom Apartment
- 1st Floor (Lift)
- 512 Square Feet (47.5 Sq.M)
- Open Plan Reception Room
- Integrated Kitchen
- Bathroom
- Fantastic Direct Views of St Johns Gardens
- 24 Hour Concierge
- Close to Shops & Restaurants
- Excellent Transport Links In Walking Distance



Neville House

Approximate Gross Internal Area
512 sq ft / 47.5 sq m



First Floor

Not to scale, for guidance only and must not be relied upon as a statement of fact.
All measurements and areas are approximate only and have been prepared in
accordance with the current edition of the RICS Code of Measuring Practice.

