



4 Elizabeth Court, Westminster
London SW1P

GARTONJONES.COM



4 Elizabeth Court, Westminster London, SW1P

GARTON JONES.COM

49 Marsham Street Lettings:
London +44 (0) 20 7340 0480
SW1P 3DP westminster@gartonjones.com
www.gartonjones.com

£1,100 Per Week

A spacious 2 bedroom apartment to rent of approx. 880 Square Feet in this modern popular development within a stone's throw of the River Thames and Houses of Parliament. The apartment is offered furnished and further benefits from an open plan reception room with full width floor to ceiling windows accessing a balcony, there is a smart kitchen with Siemens integrated appliances, 2 double bedrooms both with fitted wardrobes and the master benefitting from an en-suite bathroom, there is a further luxury bathroom suite and excellent storage including a utility cupboard, a further storage cupboard and fitted wardrobes to the bedroom. Residents benefit from a 24 hour concierge service, a gym and also access to a roof garden with spectacular views of the London skyline and taking in iconic landmarks. Monck Street is just a short walk from the renowned local landmarks which include the Houses of Parliament, Westminster Abbey and the Tate Britain Gallery. The local transport links of Victoria Station are nearby providing mainline UK services including the Gatwick Express as well as the underground services of Victoria, Pimlico, St James Park and Westminster. The area has an abundance of amenities in the immediate area and following on from the extensive regeneration of Victoria street a selection of many new restaurants to compliment existing. Distinguished hotels like The Wellington, The Goring, St Ermins', The Westminster are all within very close proximity. There is easy access to universities such as Chelsea College of Arts, LSE and King's College. ** Please note that the landlord will only accept payment in advance

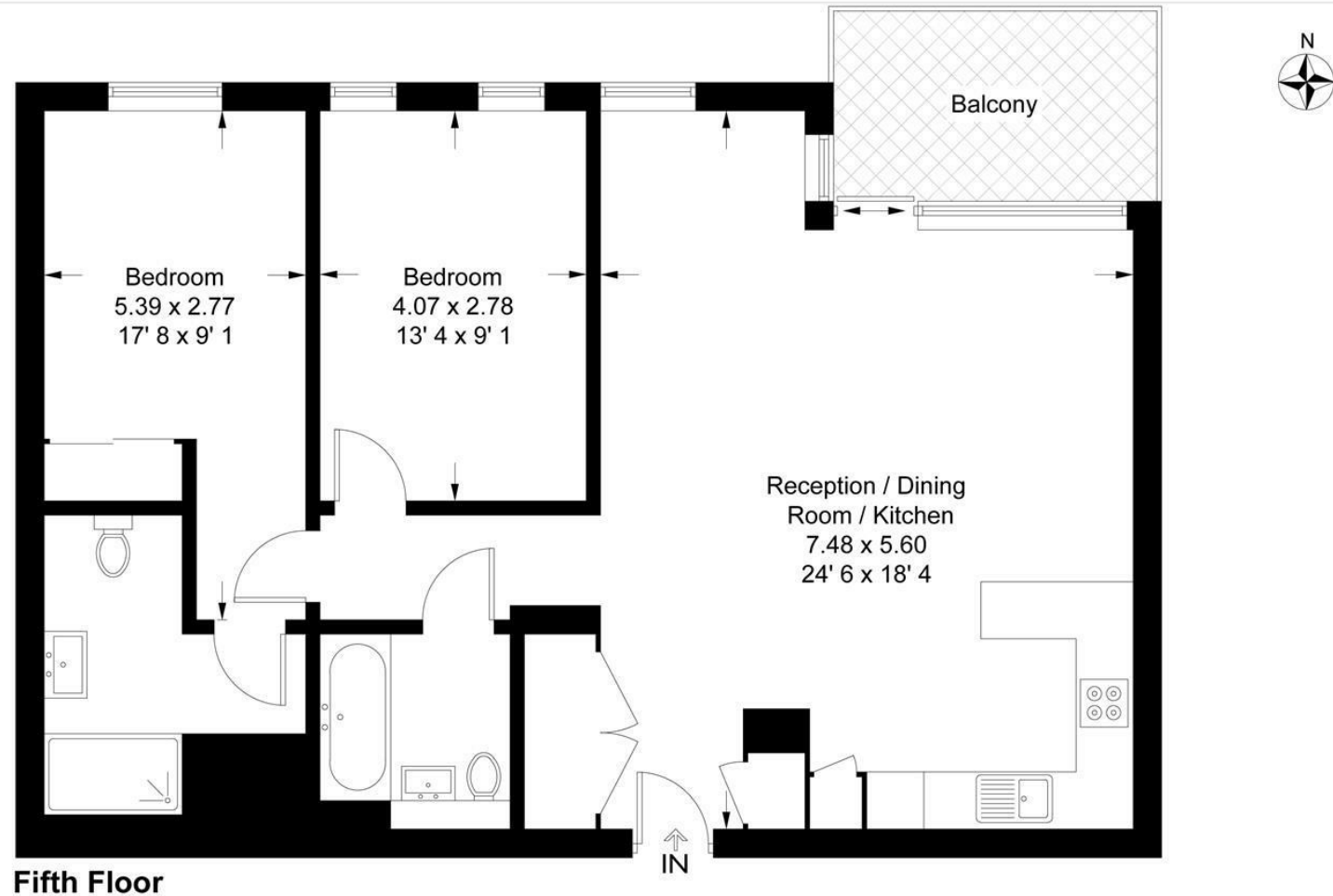
Minimum Term 8 Months
Security Deposit 6 Weeks
Council Tax Band F (London Borough of Westminster)
EPC Rating B (88)

- 2 Bedroom Apartment
- 880 Square Feet
- 5th Floor
- Modern Open Plan Integrated kitchen
- 2 Luxury Bathrooms (En-Suite)
- Winter Garden Balcony
- 24 Hour Concierge
- Available: Immediately
- Residents Gym & Roof Garden with Spectacular Views
- Moments from Local Amenities Including Shops & Restaurants



Rosamond House

Approximate Gross Internal Area = 880 sq ft / 81.8 sq m

GARTON JONES
LONDON

This plan is not to scale and must be used as layout guidance only. All measurements and areas are approximate and should not be relied upon to provide accurate information. This plan must not be relied upon when making property valuations, design considerations or any other such relevant decisions. We accept no responsibility or liability (whether in contract, tort or otherwise) in relation to any loss whatsoever arising from or in connection with any use of this plan or the adequacy, accuracy or completeness of it or any information within it.



