



56 Vincent Square, Westminster
London SW1P

GARTONJONES.COM



56 Vincent Square, Westminster London, SW1P

GARTON JONES.COM

49 Marsham Street Lettings:
London +44 (0) 20 7340 0480
SW1P 3DP westminster@gartonjones.com
www.gartonjones.com

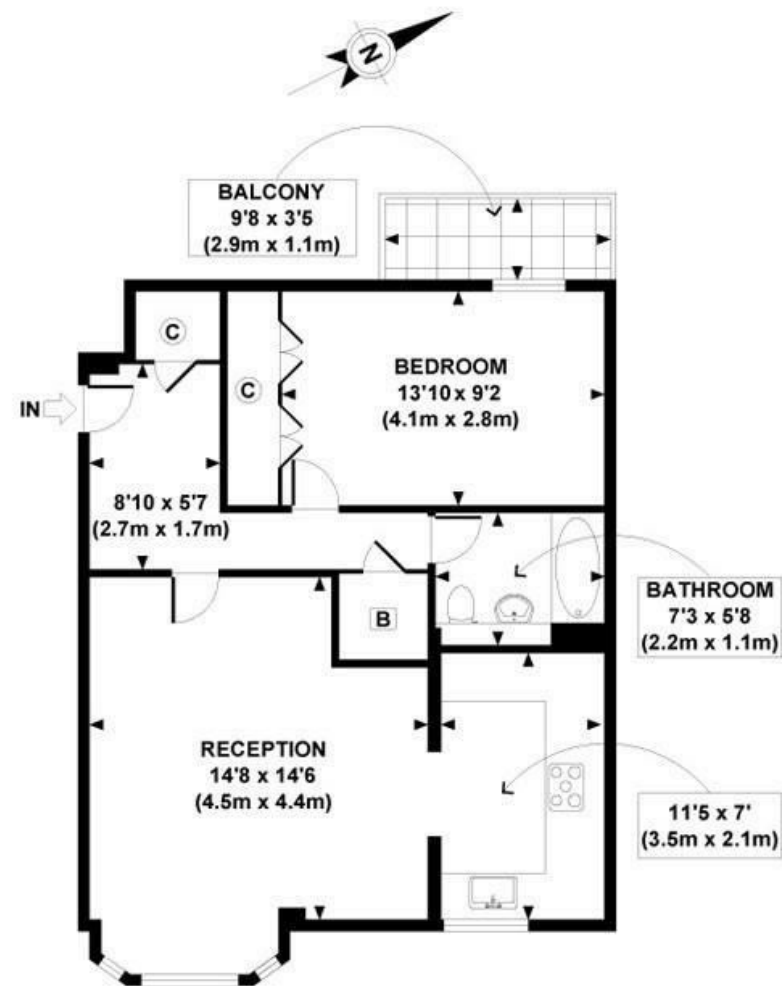
£615 Per Week

A bright and spacious 1 double bedroom apartment of approx. 604 square feet (56 sq.m) located on the 1st floor (with lift) of this popular development on Vincent Square. This furnished apartment further comprises of an open plan reception room with an integrated kitchen, double bedroom with fitted wardrobes and access to a private balcony and offers ample storage throughout. 56 Vincent Square is exceptionally well positioned for easy access to the renowned local landmarks which include the Houses of Parliament, Westminster Abbey and the Tate Britain Gallery. The local transport links of Victoria Station are nearby providing mainline UK services including the Gatwick Express as well as the underground services of Victoria, Pimlico, St James Park and Westminster. The area has an abundance of amenities in the immediate area and following on from the extensive regeneration of Victoria street a selection of many new restaurants to compliment existing. Distinguished hotels like The Wellington, The Goring, St Ermins', The Westminster are all within very close.

Council Tax Band F (London Borough of Westminster)
Minimum Term 12 Months
5 Week Deposit
EPC 79 (C)

- One Double Bedroom Apartment
- 1st Floor (With Lift)
- 604 Sq. Ft (56 Sq. M)
- Open Plan Reception
- Bathroom
- Residents Porter
- Furnished
- Available: 29th September 2025
- Close To The Many Amenities Of Victoria Street
- Moments From The Transport Links of Pimlico, Victoria And St James Park Tube Station





FIRST FLOOR
GROSS INTERNAL
FLOOR AREA 604 SQ FT

APPROX. GROSS INTERNAL FLOOR AREA 604 SQ FT / 56 SQ M

