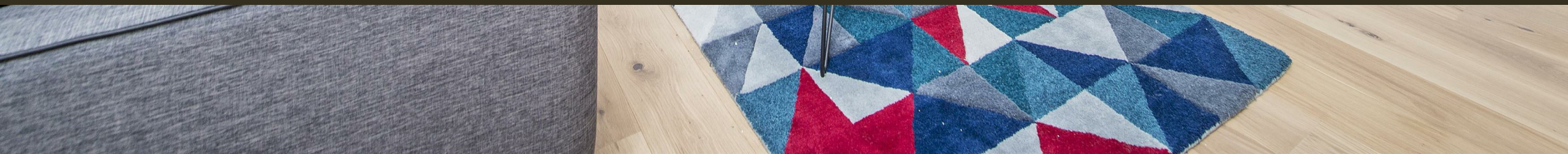




City Island, Canning Town
London E14

GARTON JONES.COM



City Island, Canning Town London, E14

GARTON JONES.COM

49 Marsham Street Sales +44 (0) 20 7340 0480
London westminster@gartonjones.com
SW1P 3DP www.gartonjones.com

£575 Per Week

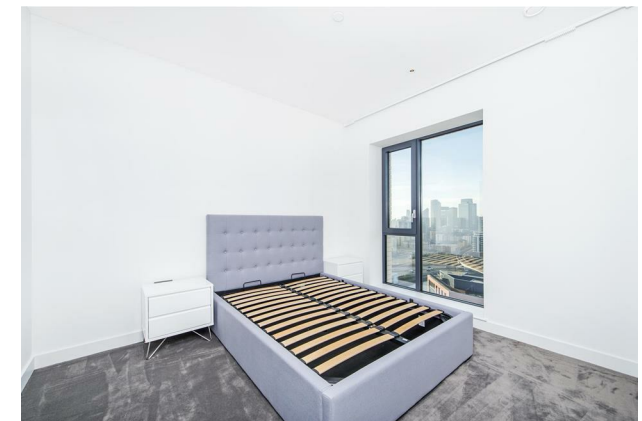
We are pleased to offer this very well presented one bedroom apartment available to let in the popular Ballymore City Island development. The internal living space measures at 541 Square Feet (50.3 Sq.M) located on the 18th Floor with lift. The accommodation comprises of an open plan reception room with an integrated kitchen, a luxury bathroom suite and Juliette style balcony. City Island is a new neighbourhood located on the Leamouth Peninsula by Canary Wharf. The landscaped site is home to the English National Ballet (Kent Building), surrounded by water and connected by a specially commissioned bridge. The Island's residents are members of the exclusive City Island Arts Club and membership allows access to a range of elegantly designed private facilities including a clubhouse, 24 hour concierge, gymnasium, spa & treatment rooms, a screening room, pools and gardens. There are many on site shops and restaurants and very well connected to local transport links including the DLR.

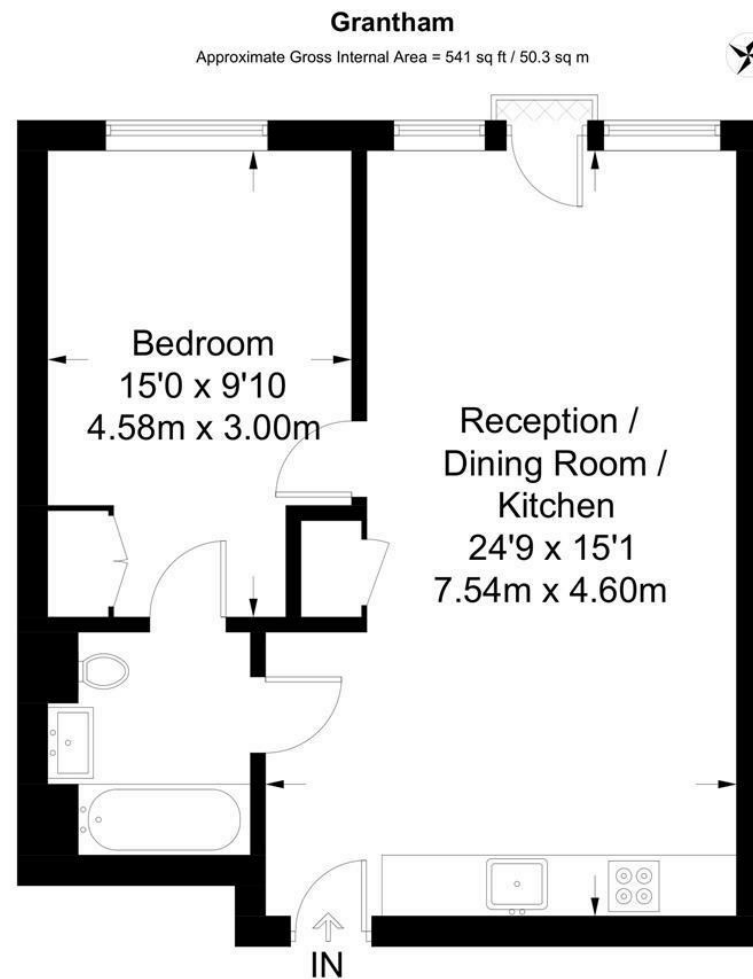
**Please note that the furniture may differ to that shown in the current photos

Minimum Term 12 Months
Deposit 5 Weeks
Council Tax Band D (Tower Hamlets)
EPC Rating B (85)

EPC certificate available on request.

- 1 Bedroom Apartment
- 541 Square Feet (50.3 Sq.M)
- 18th Floor (Lift)
- Open Plan Reception Room
- Contemporary Integrated Kitchen
- Luxury Bathroom Suite
- Juliette Style Balcony & Available 21/08/2025
- Many On-Site Shops & Restaurants
- Residents Facilities including a 24 Hour Concierge, Gym, Spa, Pool & Screening Room
- Close To Canning Town Station





Eighteenth Floor

Not to scale, for guidance only and must not be relied upon as a statement of fact.
All measurements and areas are approximate only and have been prepared in
accordance with the current edition of the RICS Code of Measuring Practice.

