



Page Street, Westminster  
London SW1P

GARTONJONES.COM



Page Street, Westminster  
London, SW1P

GARTON JONES.COM

49 Marsham Street Sales +44 (0) 20 7340 0480  
London westminster@gartonjones.com  
SW1P 3DP www.gartonjones.com

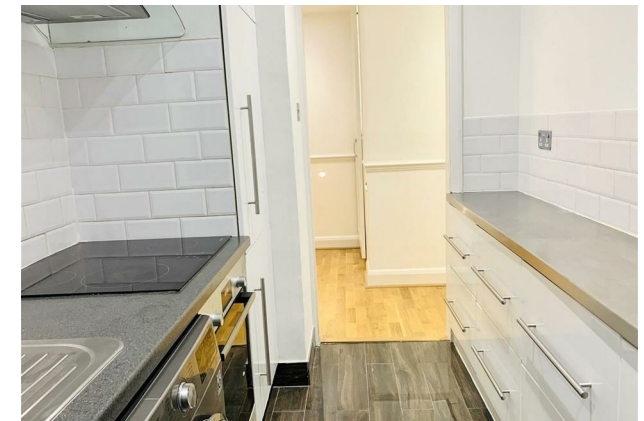
## £600 Per Week

A 2 bedroom apartment located on the lower floor of this well maintained red brick building in the heart of Westminster, close to the River Thames, the Houses of Parliament and Buckingham Palace. The property is furnished and further benefits from a reception room, a smart separate kitchen, modern bathroom suite, wood flooring throughout and storage. Probyn House is located only moments from the transport links of St James's Park, Westminster and Victoria which are all within walking distance. There is an abundance of local amenities including a Sainsburys, Tesco Express and Waitrose. The transport links of St James's Park, Westminster and Victoria are all within walking distance. St Johns Smith Square Concert Halls is within a 10 minute walk offering a variety of classical musical performances plus a variety of bus services to the City and Waterloo. Garton Jones are close by so are readily available for viewings

Deposit Minimum 5 Week  
Minimum Term 12 Months  
Council Tax Band F (London Borough of Westminster)  
EPC Rating: C (73)

EPC certificate available on request.

- 2 Double Bedroom Apartment
- Lower Ground Floor
- 623 Square Feet
- Reception Room
- Separate Integrated Kitchen
- Modern Bathroom
- Furnished
- Available: 8th August 2025
- Close To Local Shopping Facilities
- Walking Distance to the Transport Links of St James's Park, Westminster & Victoria



Gross Internal Area: 58 Sq. metres  
623 Sq. feet



LOWER GROUND FLOOR



