



161 Millbank, Westminster
London SW1P

GARTONJONES.COM



161 Millbank, Westminster London, SW1P

£750 Per Week

We are pleased to offer to let this well presented 1 bedroom apartment located on the 3rd floor (with lift) of Riverwalk, a stunning new development situated on the banks of the River Thames by Vauxhall Bridge in Westminster. This bright and spacious apartment further comprises of a bright reception room, there is an open plan smart Kitchen with Miele integrated appliances, double bedroom with fitted wardrobes and contemporary bathroom. Additionally there is comfort cooling and a fully integrated Crestron home automation and entertainment system. Residents of Riverwalk enjoy exclusive private facilities including a fitness suite overlooking the Thames and a 24 hour concierge. The development is well located for access to the renowned local landmarks which include the Houses of Parliament, Westminster Abbey and the Tate Britain Gallery. The local transport links of Pimlico and Victoria Station is nearby providing mainline UK services including the Gatwick Express as well as the underground services of Victoria and Pimlico. Garton Jones' Westminster office is located close by so are readily available for viewings

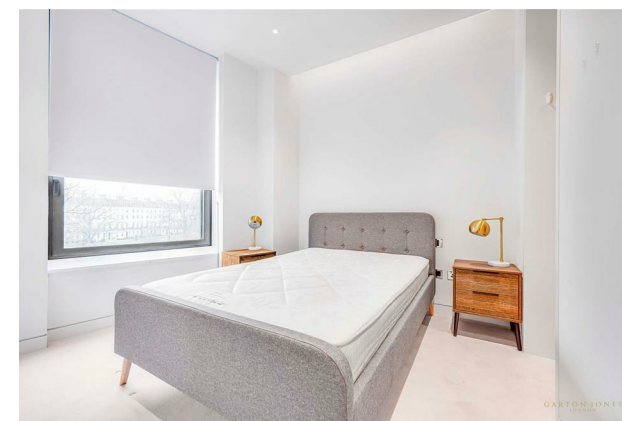
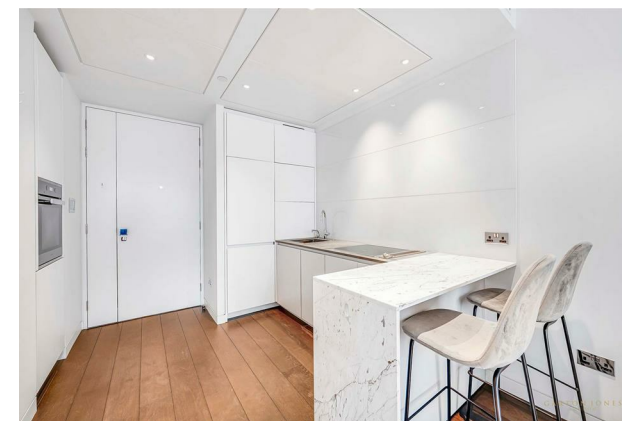
* Internal viewing recommended as the furniture may differ slightly to that of the images displayed and please note that this landlord only accepts payments in advance

Minimum Term 12 months
Deposit 5 Weeks
Council Tax Band E (London Borough of Westminster)
EPC Rating B (84)

- Stunning One Bedroom Apartment
- 3rd Floor
- 402 Square Feet
- Open Plan Reception Room
- Kitchen with Miele Integrated Appliances
- Available: 31st July 2025
- Furnished
- 24 Hour Concierge
- Luxury Residents Gym
- Moments From Transport Links of Pimlico & Victoria

GARTON JONES.COM

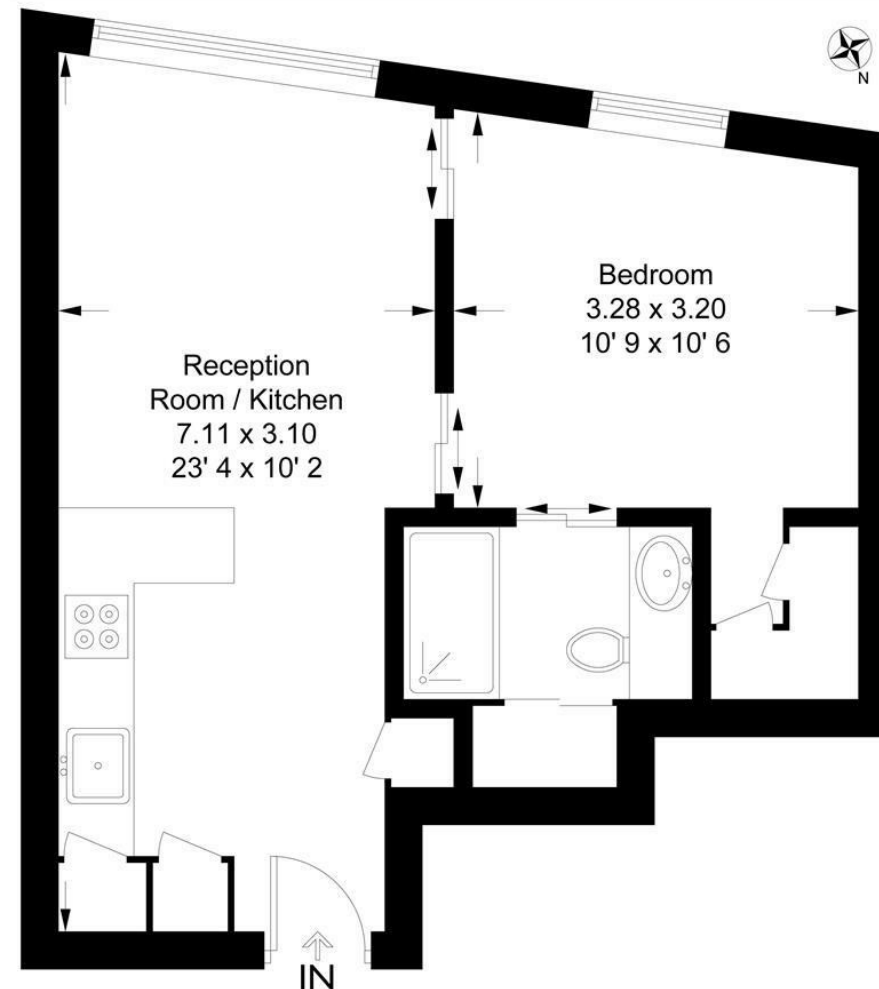
49 Marsham Street Lettings:
London SW1P 3DP +44 (0) 20 7340 0480
westminster@gartonjones.com
www.gartonjones.com



Riverwalk

Approximate Gross Internal Area = 402 sq ft / 37.4 sq m

GARTON JONES
LONDON



Third Floor

This plan is not to scale and must be used as layout guidance only. All measurements and areas are approximate and should not be relied upon to provide accurate information. This plan must not be relied upon when making property valuations, design considerations or any other such relevant decisions. We accept no responsibility or liability (whether in contract, tort or otherwise) in relation to any loss whatsoever arising from or in connection with any use of this plan or the adequacy, accuracy or completeness of it or any information within it.



