



Page Street, Westminster
London SW1P

GARTONJONES.COM



Page Street, Westminster
London, SW1P

GARTON JONES.COM

49 Marsham Street Lettings:
London +44 (0) 20 7340 0480
SW1P 3DP westminster@gartonjones.com
www.gartonjones.com

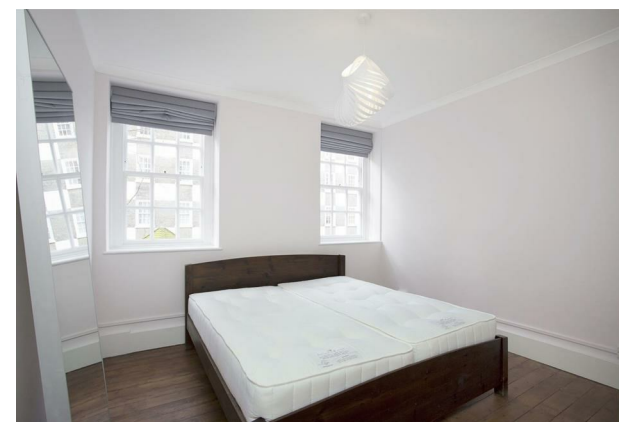
£785 Per Week

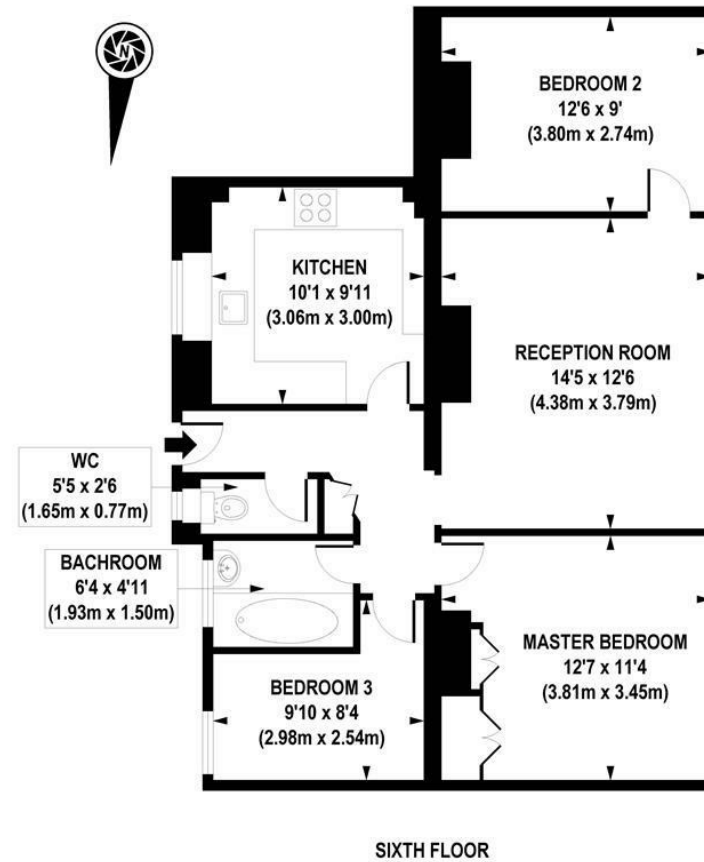
A bright and spacious 3 bedroom apartment available to let in the heart of Westminster. The apartment is located in this Iconic development, which is a grade II listed building, designed by famous architect, Edward Lutyens. The living space comprises of a reception room, a modern separate smart kitchen, modern bathroom, separate WC, two double bedrooms and a 3rd room which can be used as an office or smaller single bedroom. Edric House is extremely convenient for access to many of the renowned local landmarks which include the Houses of Parliament and Westminster Abbey. The local transport links of Victoria Station is nearby providing mainline UK services including the Gatwick Express as well as the underground services of Victoria, Pimlico, St James Park and Westminster. The area has an abundance of amenities and restaurants such as The Cinnamon Club, the Ivy Bar and Grill and Yaatra based in the Old Westminster Fire Station. Just a short walk away is St Johns Smith Square Concert Halls offering a variety of classical musical performances.

** Please note that some furniture may now differ

Deposit 5 Weeks
Minimum Term 12 Months
Security Deposit 5 Weeks
Council Tax Band D (London Borough of Westminster)
EPC Rating: C (70)

- Well Presented 3 Bedroom Apartment
- 748 Sq.Ft (69.49 Sq.M)
- Bright Reception Room
- Separate Modern Integrated Kitchen
- Contemporary Bathroom
- Separate WC
- Furnished & HMO Compliant
- Close to Local Amenities Including Shops, Restaurants & Transport Links
- Walking Distance to St James' Park, Victoria, Westminster & Pimlico





APPROXIMATE GROSS INTERNAL AREA 748 sq. ft / 69.49 sq. m

