



John Islip Street, Westminster
London SW1P

GARTONJONES.COM



John Islip Street, Westminster
London, SW1P

GARTON JONES.COM

49 Marsham Street Lettings:
London +44 (0) 20 7340 0480
SW1P 3DP westminster@gartonjones.com
www.gartonjones.com

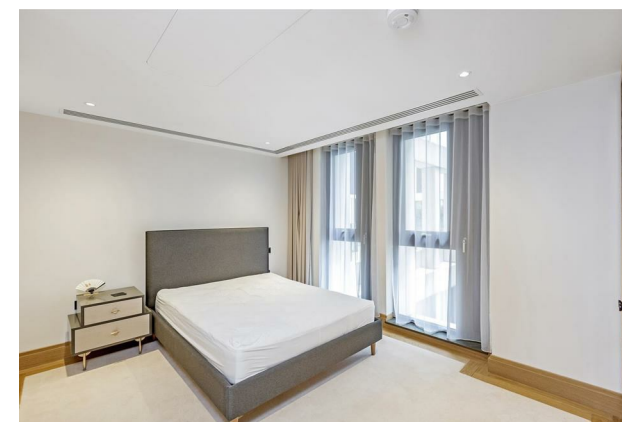
£875 Per Week

We are pleased to offer this fantastic 1 bedroom apartment available to rent of this luxury modern development close to the River Thames and the Houses of Parliament. This furnished apartment measures at 670 square feet (62.2 Sq. m) and has an open plan reception room with a smart integrated kitchen, ample storage including built in wardrobes to the master bedroom and a utility cupboard housing a washer dryer, there is a contemporary luxury bathroom, comfort cooling and wood flooring throughout. The apartment has been finished to the highest standard throughout. Residents benefit from on-site amenities such as 24 hour concierge, a health spa with swimming pool and fitness centre, business centre and beautiful landscaped gardens. John Islip Street is extremely convenient for access to the local transport links of Victoria Station providing mainline UK services including the Gatwick Express as well as the underground services of Victoria, Pimlico, Westminster and St James' Park. The area has an abundance of amenities and distinguished hotels like The Wellington, The Goring, St Ermins' are all within very close proximity. There is easy access to universities such as Chelsea College of Arts, LSE and King's College.

**Please note that the furniture may differ to that shown in the current photos

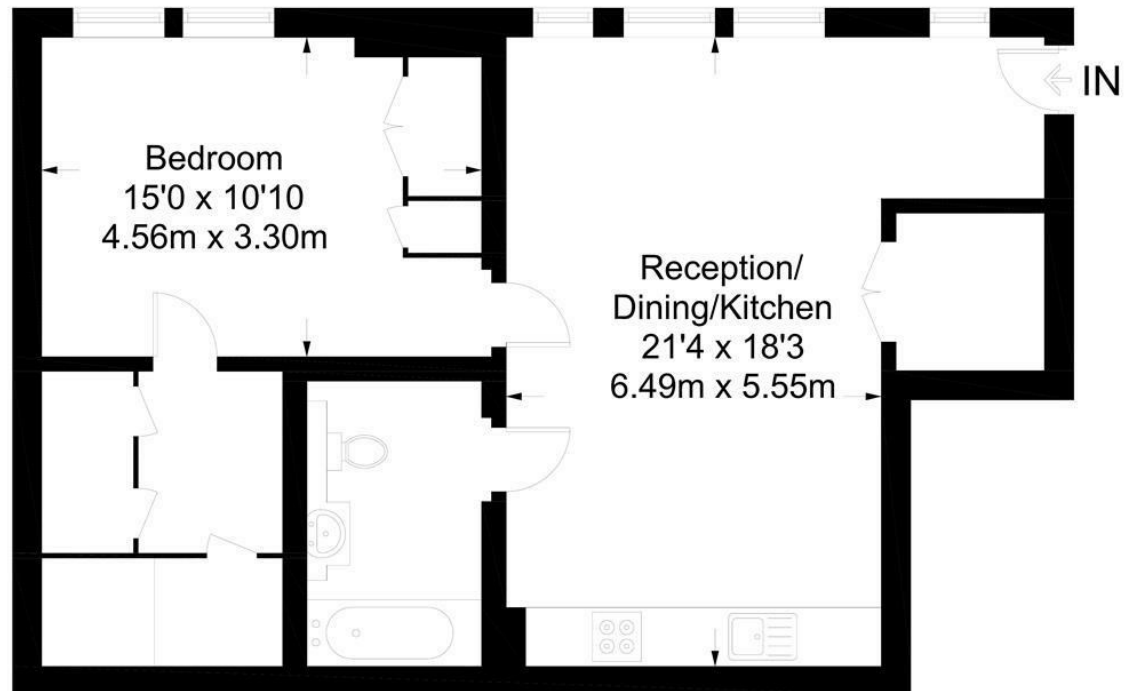
Minimum Term 12 Months
Deposit 5 Weeks
Council Tax Band E (London Borough of Westminster)
EPC Rating: B (84)

- 1 Bedroom Apartment
- 670 Sq.Ft (62.2 Sq.M)
- Open Plan Reception Room
- Kitchen with Integrated Appliances
- Bathroom
- Available 31st May 2025
- 24 Hour Concierge
- Residents Leisure Suite with Gym & Pool
- Close to Local Shops, Restaurants & Transport Link
- Moments From Transport Links of Westminster, Victoria and St James Park





Approximate Gross Internal Area = 670 sq ft / 62.2 sq m



Second Floor

Not to scale, for guidance only and must not be relied upon as a statement of fact.
All measurements and areas are approximate only and have been prepared in
accordance with the current edition of the RICS Code of Measuring Practice.

