



47 Marsham Street, Westminster  
London SW1P

GARTONJONES.COM

47 Marsham Street, Westminster  
London, SW1P

GARTON JONES.COM

49 Marsham Street Lettings:  
London +44 (0) 20 7340 0480  
SW1P 3DP westminster@gartonjones.com  
www.gartonjones.com

£625 Per Week

We are pleased to offer for rent this 1 bedroom apartment located on the 2nd floor (with lift) of this popular development in Westminster close to the River Thames. The property measures at approximately 521 Square feet (48 Sq.M). The living space comprises of a reception room with views onto the pretty internal gardens, there is a separate integrated kitchen, modern bathroom and double bedroom with fitted wardrobes. Additional features include wood flooring, ample storage and situated in a quiet position. Residents of Romney House benefit from a 24 hour concierge and a well-equipped gymnasium. Marsham Street is extremely convenient for access to many of the renowned local landmarks which include the Houses of Parliament and Westminster Abbey. The local transport links of Victoria Station is nearby providing mainline UK services including the Gatwick Express as well as the underground services of Victoria, Pimlico, St James Park and Westminster. The area has an abundance of amenities and restaurants such as The Cinnamon Club, the Ivy Bar and Grill and Yaatra based in the Old Westminster Fire Station. Just a short walk away is St Johns Smith Square Concert Halls offering a variety of classical musical performances. Garton Jones are based on site so are readily available for viewings.

12 Months Minimum Term  
5 Week Deposit  
Council Tax Band F (London Borough of Westminster)  
EPC Rating: B (85)

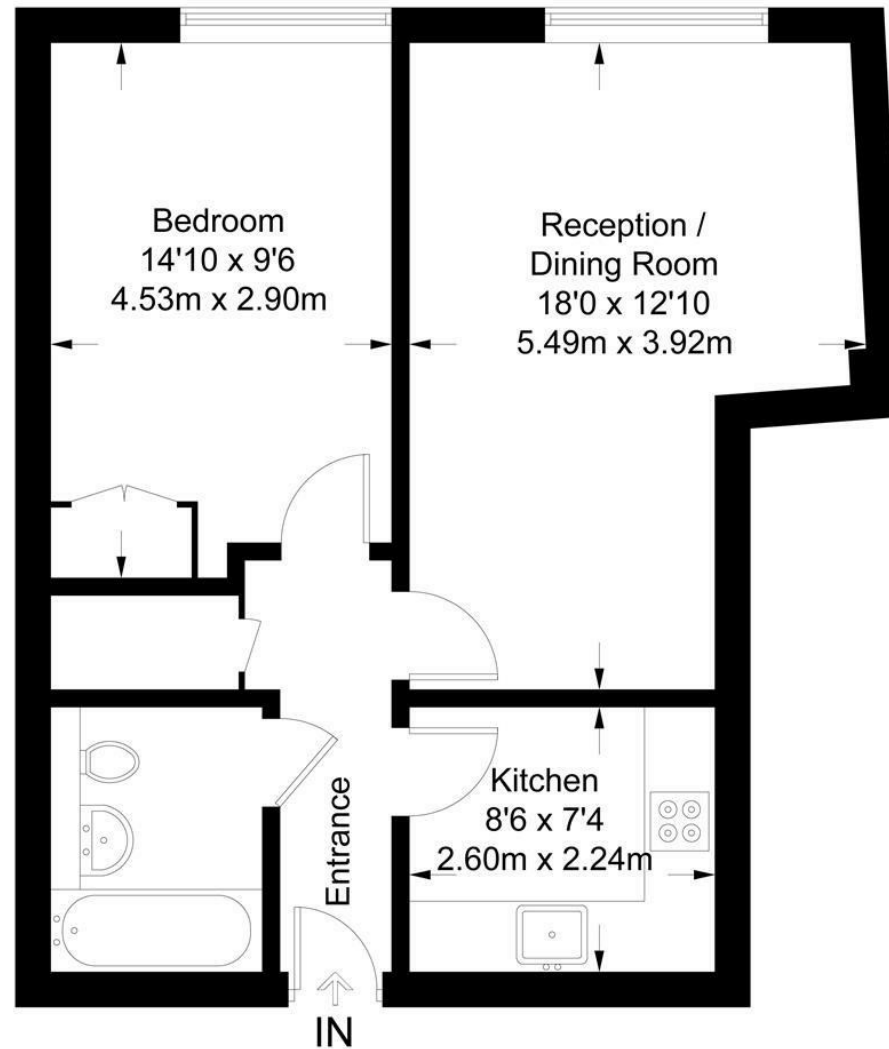
- 1 Bedroom Apartment
- 2nd Floor (With Lift)
- 521sq.ft (48sq.m)
- Reception Room
- Separate Integrated Kitchen
- Bathroom
- Views Onto Communal Gardens
- 24 Hour Concierge & Residents Gym
- Close To Local Shops & Restaurants
- Walking Distance To St James's Park, Westminster & Victoria Transport Links





**Marsham Street**

Approximate Gross Internal Area = 521 sq ft / 48.4 sq m



**Second Floor**

