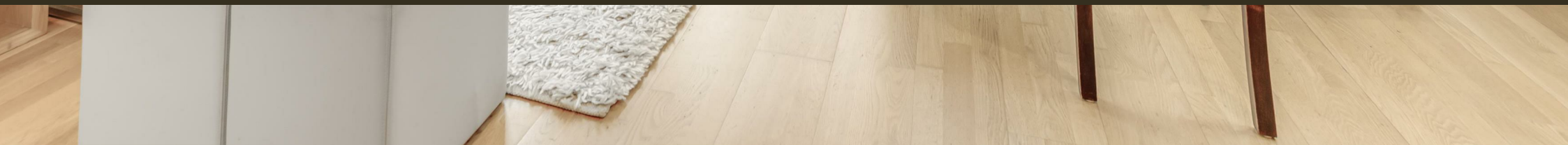




47 Marsham Street, Westminster
London SW1P

GARTONJONES.COM



47 Marsham Street, Westminster
London, SW1P

GARTON JONES.COM

49 Marsham Street Lettings:
London +44 (0) 20 7340 0480
SW1P 3DP westminster@gartonjones.com
www.gartonjones.com

£750 Per Week

A 2 bedroom apartment available to rent located on the 1st floor (with lift) of this popular development in the heart of Westminster. The property is offered furnished and the property benefits from an open plan reception room with an integrated kitchen, there are 2 double bedrooms and 2 bathrooms (1 en-suite). Additionally there is a 24 hour concierge, 2 secure underground parking spaces and a residents on-site gymnasium. Romney House is just a short walk from the renowned local landmarks which include the Houses of Parliament, Westminster Abbey, Tate Britain Gallery and St Johns Smith Square Concert Halls offering a variety of classical musical performances. The local transport links of Victoria Station are nearby providing mainline UK services including the Gatwick Express as well as the underground services of Victoria, Pimlico, St James Park and Westminster. The area has an abundance of amenities in the immediate area and following on from the extensive regeneration of Victoria street a selection of many new restaurants to compliment existing. Distinguished hotels like The Wellington, The Goring, St Ermins', The Westminster are all within very close proximity. Garton Jones manage this property and are based on site

**Some furniture may differ slightly in the images as there are tenants belongings

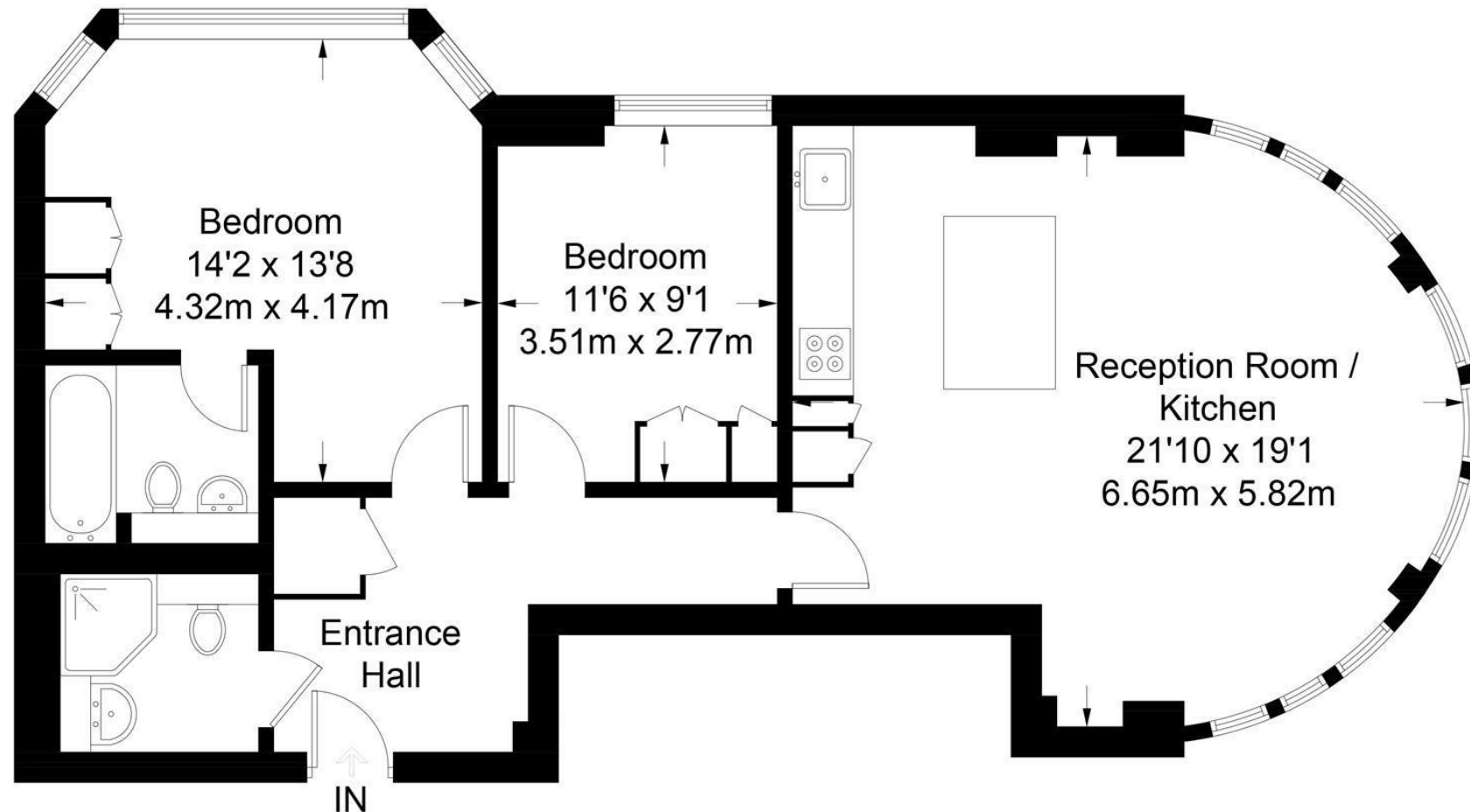
Minimum Term 12 Months
Deposit 5 Weeks
Council Tax Band F (London Borough of Westminster)
EPC Rating C (80)

- 2 Bedroom Apartment
- 1st Floor (With Lift)
- Open Plan Reception Room
- Integrated Kitchen
- 2 Bathrooms (En-Suite)
- 24 Hour Concierge
- 2 Secure Underground Parking Spaces
- Close To Local Shops & Restaurants
- Walking Distance To St James's Park, Westminster & Victoria Transport Links



Romney House

Approximate Gross Internal Area = 817 sq ft / 75.9 sq m



First Floor

Not to scale, for guidance only and must not be relied upon as a statement of fact.
All measurements and areas are approximate only and have been prepared in accordance with the current edition of the RICS Code of Measuring Practice.

