



84 Horseferry Road, Westminster  
London SW1P

GARTONJONES.COM

84 Horseferry Road, Westminster  
London, SW1P

GARTON JONES.COM

49 Marsham Street Lettings:  
London +44 (0) 20 7340 0480  
SW1P 3DP westminster@gartonjones.com  
www.gartonjones.com

£1,200 Per Week

A 3 bedroom apartment available to let, located on the 3rd floor of this popular development in the heart of Westminster. The property is very well proportioned measuring at 1395 Square Feet (130 Sq.M) and comprising of a reception room with access to balcony, separate integrated kitchen, 3 good size double bedrooms all with fitted wardrobes with the master benefitting from an en-suite, further balcony, further guest bathroom and additional ample storage. As a resident of Cranbrook House you will also have the use of a 24 hour concierge and lift to all floors. There is a secure underground parking space. Horseferry Road is very close to the links of St James's Park, Westminster and Victoria which are all within walking distance. The surrounding area also offers a variety of amenities which include Sainsburys, Tesco's, Waitrose and as selection of retail stores and restaurants. Just a short walk away is the Chelsea College of Arts and St Johns Smith Square Concert Halls offering a variety of classical musical performances. Garton Jones manage this apartment and are located very close by.

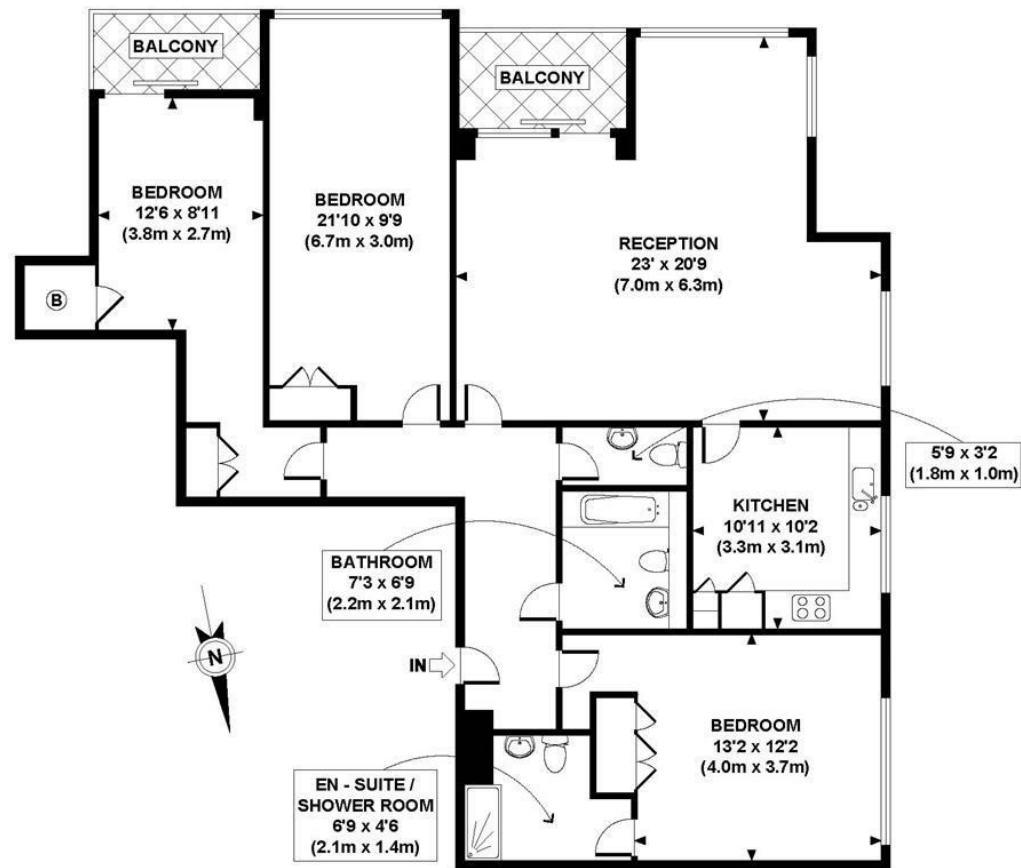
\*\*Please note that the furniture may differ to that shown in the current photos

Minimum Term 12 Months  
Deposit 6 Weeks  
EPC Rating 70 (C)  
Council Tax Band G (London Borough of Westminster)

- 3 Bedroom Apartment
- 3rd Floor (Lift)
- 1395 Square Feet (130 Sq.M)
- Reception
- Separate Integrated Kitchen
- 2 Bathrooms (1 En-Suite) & Further WC
- Secure Underground Parking
- Available 30th June 2025
- Conveniently Located For St James Park, Westminster and Victoria Station
- Moments From Many Amenities



319 CRANBROOK HOUSE



THIRD FLOOR  
GROSS INTERNAL  
FLOOR AREA 1395 SQ FT

APPROX. GROSS INTERNAL FLOOR AREA 1395 SQ FT / 130 SQ M

Ref: BGGJW - Copyright [photoplan.co.uk](http://photoplan.co.uk)

Floorplans are for identification and guideline purposes only, not to scale.  
Compliant with RICS code of measuring practice.



