



47 Marsham Street, Westminster  
London SW1P

GARTON JONES.COM



47 Marsham Street, Westminster  
London, SW1P

GARTON JONES.COM

49 Marsham Street Sales +44 (0) 20 7340 0480  
London westminster@gartonjones.com  
SW1P 3DP www.gartonjones.com

£850 Per Week

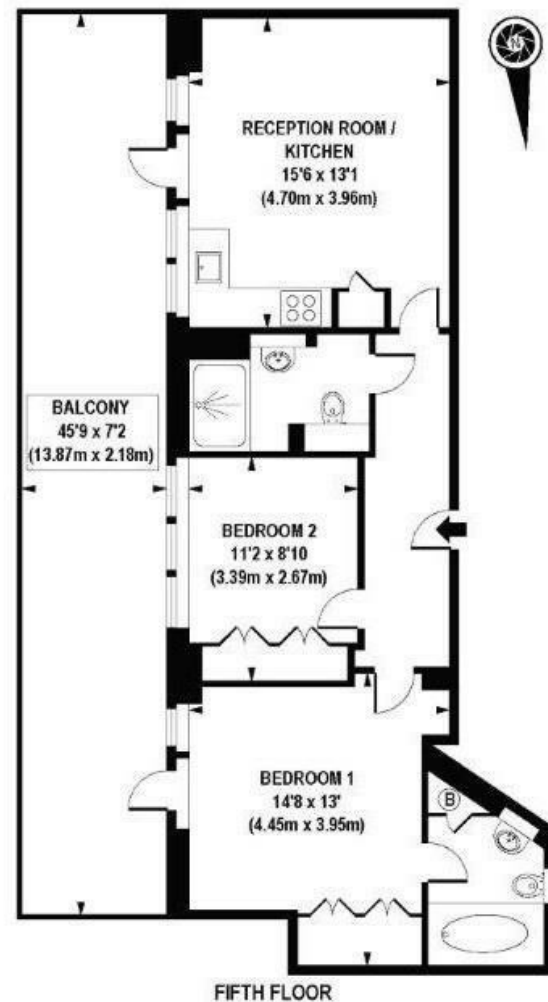
We are pleased offer for rent this marvellous 2 bedroom apartment located in this popular development in Westminster close to the River Thames. The living space comprises of an open integrated kitchen and reception room with access to a terrace offering direct views to the Houses Of Parliament. There are two double bedrooms both with fitted wardrobes and two bathrooms one of which is an en-suite to the master bedroom. Residents of Romney House benefit from a 24 hour concierge and a gymnasium. Marsham Street is extremely convenient for access to many of the renowned local landmarks which include the Houses of Parliament and Westminster Abbey. The local transport links of Victoria Station is nearby providing mainline UK services including the Gatwick Express as well as the underground services of Victoria, Pimlico, St James Park and Westminster. The area has an abundance of amenities and restaurants such as The Vincent Rooms, The Cinnamon Club, the Ivy Bar and Grill and Yaatra based in the Old Westminster Fire Station. Just a short walk away is the Chelsea College of Arts and St Johns Smith Square Concert Halls offering a variety of classical musical performances. Garton Jones are based on site so are readily available for viewings.

Security Deposit 5 Weeks  
Council Tax Band F (London Borough of Westminster)  
Minimum Term 12 Months  
EPC Rating C (75)

- Fantastic 2 Bedroom Apartment
- 5th Floor (Lift)
- Open Plan Reception Room
- Modern Integrated Kitchen
- Large Private Terrace With Amazing London Skyline Views
- 24 Hour Concierge
- Residents Gymnasium
- Secure Underground Parking
- Close to Local Shopping Facilities
- St James` Park and Westminster Tube Links within Walking Distance



EPC certificate available on request.



APPROX. GROSS INTERNAL FLOOR AREA 622 sq. ft / 57.78 sq. m



