



Page Street, Westminster
London SW1P

GARTONJONES.COM

Page Street, Westminster
London, SW1P

GARTON JONES.COM

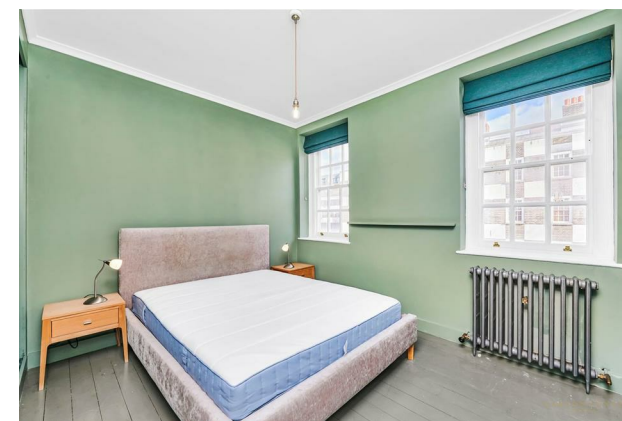
49 Marsham Street Lettings:
London +44 (0) 20 7340 0480
SW1P 3DP westminster@gartonjones.com
www.gartonjones.com

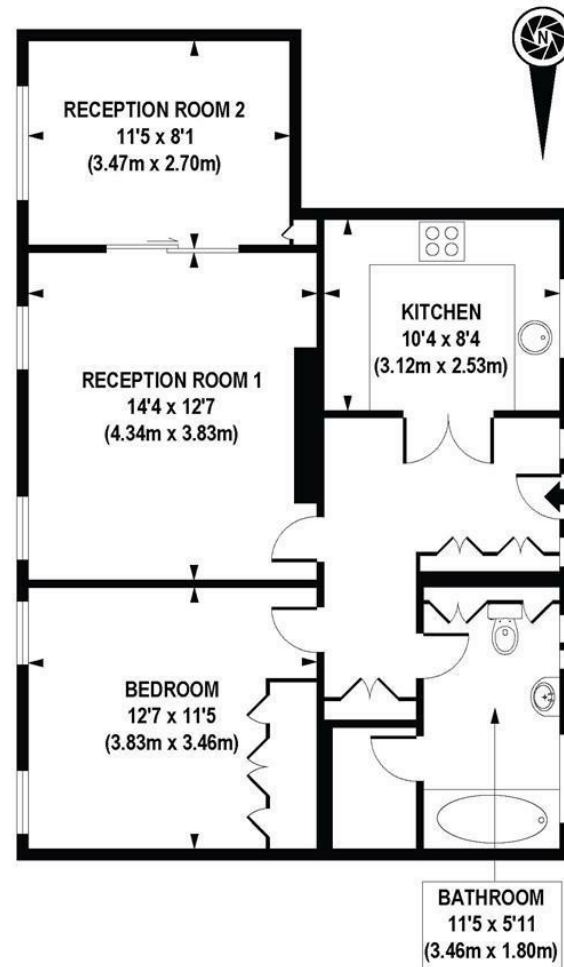
£575 Per Week

A bright and spacious apartment of approx. 721sq.ft (67sq.m) available to rent in the heart of Westminster. This immaculately presented furnished property has a dual aspect and an abundance of natural light. The living space comprises of a reception room with a separate dining room which is ideal for entertaining and also offers a superb workspace for hybrid working. There is a smart integrated kitchen, a well proportioned double bedroom with fitted wardrobes and a very large bathroom with a separate shower and ample storage throughout. Tothill House is centrally located and is just a short distance away from Whitehall, The Houses of Parliament, Westminster Abbey and Buckingham Palace as well as the Tate Gallery and Chelsea College of Arts. The transport links of St James's Park, Westminster and Victoria which are all just a stone's throw away as well as a selection of bus services to The City and The West End. In the surrounding area there is a choice from a variety of amenities and a selection of many restaurants and cafes. Garton Jones are located nearby to the development so are readily available for viewings.

Deposit 5 weeks
Term 12 Months
Council Tax Band D (London Borough of Westminster)
EPC D (67)

- Large 1 Bedroom with 2 Receptions
- 721sq.ft (67sq.m)
- 4th Floor (With Lift)
- Separate Dining Room
- Large Contemporary Bathroom with Separate Shower
- Smart Integrated Kitchen
- Available: 9th May 2025
- Close to Restaurants & Transport Links





FOURTH FLOOR

APPROXIMATE GROSS INTERNAL AREA 721 sq. ft / 67.01 sq. m

