



35 Buckingham Gate, Westminster  
London SW1E

GARTONJONES.COM



35 Buckingham Gate, Westminster  
London, SW1E

GARTON JONES.COM

49 Marsham Street Lettings:  
London +44 (0) 20 7340 0480  
SW1P 3DP westminster@gartonjones.com  
www.gartonjones.com

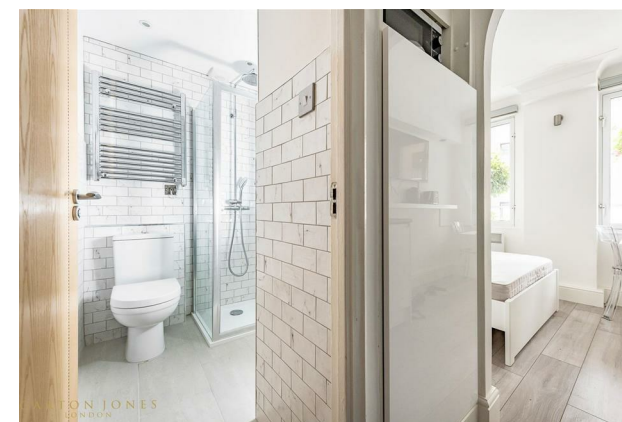
£375 Per Week

A well presented studio apartment available to let within this popular established development located within a few minutes' walk from St James' Park Tube Station. The property has a bright aspect and would make an ideal pied a terre. The accommodation comprises of a reception room/sleeping area with a double bed, a compact fully integrated kitchen (please note there is no washing machine so the occupant would need to use the local launderette) a contemporary shower room. 35 Buckingham Gate is a secure building with an on-site porter and is extremely well located to the transport links of St James's Park, Westminster and Victoria which are all within a few minutes walk. The surrounding area also offers a variety of retail stores, a Curzon Cinema and following on from the extensive regeneration of Victoria street a selection of many new restaurants to compliment the selection of existing ones which include M Victoria, The Ivy Victoria, Flight Club Victoria and many more . Garton Jones manage this apartment and are readily available for viewings.

\*\*Please note that the furniture may differ to that shown in the current photos.

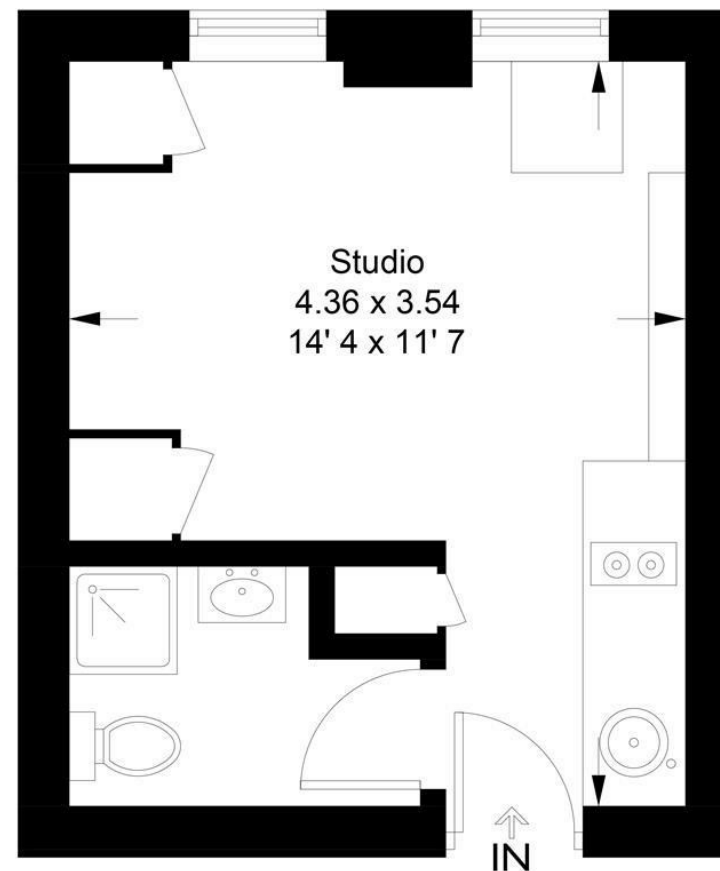
Minimum Term 12 Months  
Deposit 5 Weeks  
Council Tax Band B (London Borough of Westminster)  
EPC Rating C (71)

- Beautifully Presented Studio Apartment
- Reception / Sleeping Area
- Contemporary Shower Room
- Modern Integrated Kitchen (no washing machine so use the local launderette)
- On-site Porter
- Available: 26th May 2025
- Just Minutes From St James Park Tube, Westminster and Victoria Station
- Close To The A Selection of Amenities
- Moments From St James Park, Big Ben and Many Other Attractions



**Buckingham Gate**

Approximate Gross Internal Area = 175 sq ft / 16.3 sq m



**Ground Floor**

Not to scale, for guidance only and must not be relied upon as a statement of fact  
All measurements and areas are approximate only and have been prepared in  
accordance with the current edition of the RICS Code of Measuring Practice



