



Page Street, Westminster
London SW1P

GARTONJONES.COM



Page Street, Westminster
London, SW1P

GARTON JONES.COM

49 Marsham Street Lettings:
London +44 (0) 20 7340 0480
SW1P 3DP westminster@gartonjones.com
www.gartonjones.com

£450 Per Week

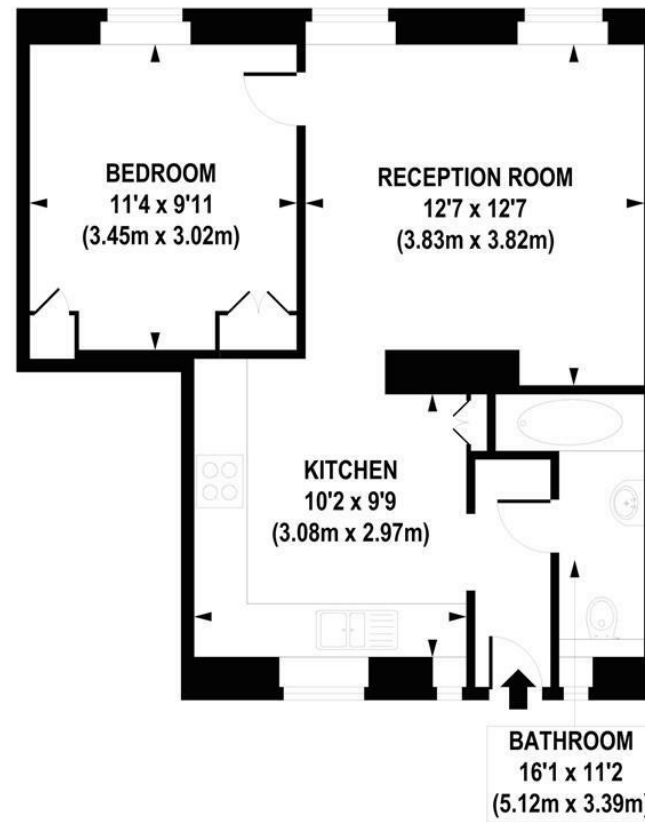
A bright and spacious apartment available to let in the heart of Westminster. This well presented property with contemporary furnishing is located on the ground floor of this established, secure development. The living space comprises of a reception room, large modern integrated eat-in kitchen with gas hob, bathroom and good storage. Tothill House is located on Vincent Street close to the junction with Marsham Street, moments from the Tate Gallery, River Thames and excellent local amenities. The Tube Links of both St James's Park and Westminster are within easy reach as are the many amenities of Victoria Street and Horseferry Road.

**Please note furniture may differ to that shown in the current photos.

Council Tax Band C (London Borough of Westminster)
Minimum Term 12 Months
5 Weeks Deposit
EPC B (71)

- 1 Bedroom Apartment
- 488 Square Feet (45 Sq.M)
- Reception Room
- Modern Bathroom
- Double Bedroom
- Furnished
- Close To Local Many Amenities
- Available: 12/04/2024
- St James's Park, Victoria And Westminster Tube Stations Within Easy Reach





GROUND FLOOR

APPROXIMATE GROSS INTERNAL AREA 488 sq. ft / 45.36 sq. m

