



Marshall Street, Westminster
London SW1P

GARTON JONES.COM

Marsham Street, Westminster
London, SW1P

GARTON JONES.COM

49 Marsham Street Sales +44 (0) 20 7340 0480
London westminster@gartonjones.com
SW1P 3DP www.gartonjones.com

£495,000 Leasehold - Share of Freehold

We are delighted to offer this bright and beautifully presented studio apartment for sale, located on the 3rd floor (with lift) of the highly sought after Marsham Court development located within the heart of Westminster. This contemporary apartment, of approx. 368sq.ft (34.2sq.m) of living space further comprises a good size living and sleeping room, there is a separate modern fitted kitchen, a shower room and good storage including fitted wardrobes. Residents of Marsham Court benefit from a 24 hour concierge service and a small communal garden space. This would make an ideal pied - a -terre, rental investment or London home. Marsham Street is centrally located and is just a short distance away from Whitehall, The Houses of Parliament, Westminster Abbey and Buckingham Palace as well as the Tate Gallery and Chelsea College of Arts. The transport links of St James's Park, Westminster, Pimlico and Victoria which are all just a stone's throw away as well as a selection of bus services to The City and The West End. In the surrounding area there is a choice from a variety of amenities and a selection of many restaurants and cafes. Garton Jones are located next to the development so are readily available for viewings.

Share Of Freehold

Service Charges: £3300 Per Annum including reserve fund contribution

Ground Rent N/A

Council Tax Band D (London Borough of Westminster)
EPC TBC

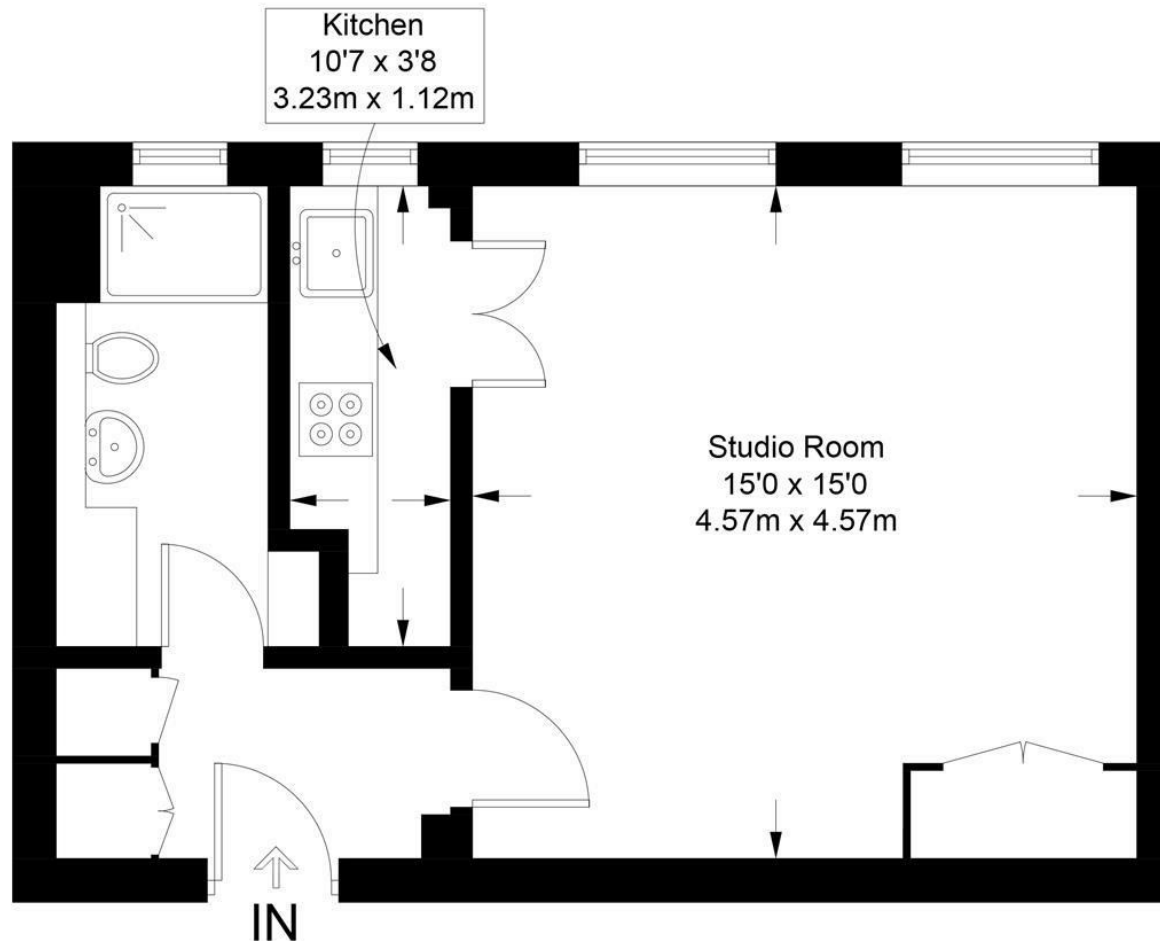
- Bright Studio Apartment
- 3rd Floor (With Lift)
- Shower Room
- Reception Room with Fitted Wardrobe
- Separate Modern Kitchen
- Ample Storage
- 24 Hour Concierge
- Sold With Vacant Possession
- Walking Distance to Westminster, St James's Park & Victoria Transport Links
- Close to Shops & Restaurants



EPC certificate available on request.

Marsham Court

Approximate Gross Internal Area = 368 sq ft / 34.2 sq m



Third Floor

Not to scale, for guidance only and must not be relied upon as a statement of fact.
All measurements and areas are approximate only and have been prepared in
accordance with the current edition of the RICS Code of Measuring Practice.

