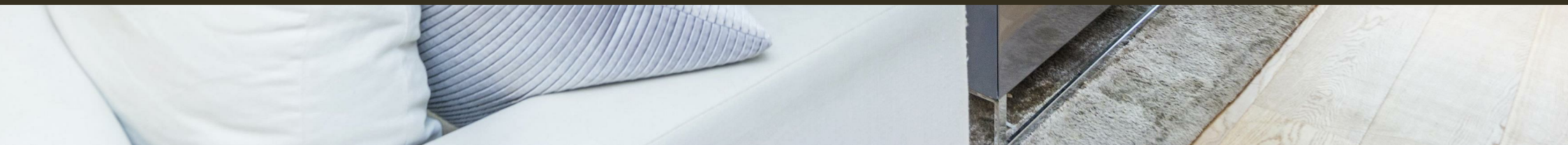




34 Monck Street, Westminster
London SW1P

GARTON JONES.COM



34 Monck Street, Westminster
London, SW1P

GARTON JONES.COM

49 Marsham Street Lettings:
London +44 (0) 20 7340 0480
SW1P 3DP westminster@gartonjones.com
www.gartonjones.com

£1,000 Per Week

A spacious large 2 bedroom apartment to rent of approx.1140sq.ft (105.9sq.m) on the 1st floor (with lift) of this modern development in the heart of Westminster, moments from the Houses of Parliament and River Thames. This furnished apartment further benefits from a large reception room with access to a private balcony, a separate integrated kitchen, guest cloakroom, there are fitted wardrobes and en-suite bathrooms to the two main bedrooms and a further office/ 3rd sleeping area. Residents benefit from a 24 hour concierge and the apartment includes a secure underground parking. Bentinck House is located on Monck Street behind the Home Office and as such you will be within easy reach of the shops, bars and restaurants of both Horseferry Road and Victoria Street. The excellent transport links of St James's Park, Westminster and Victoria are also all within walking distance. Garton Jones' Westminster office are located in the next road from the development so are readily available for viewings.

**** Not suitable for 3 sharers ****

**Please note furniture may differ to that shown in the current photos.

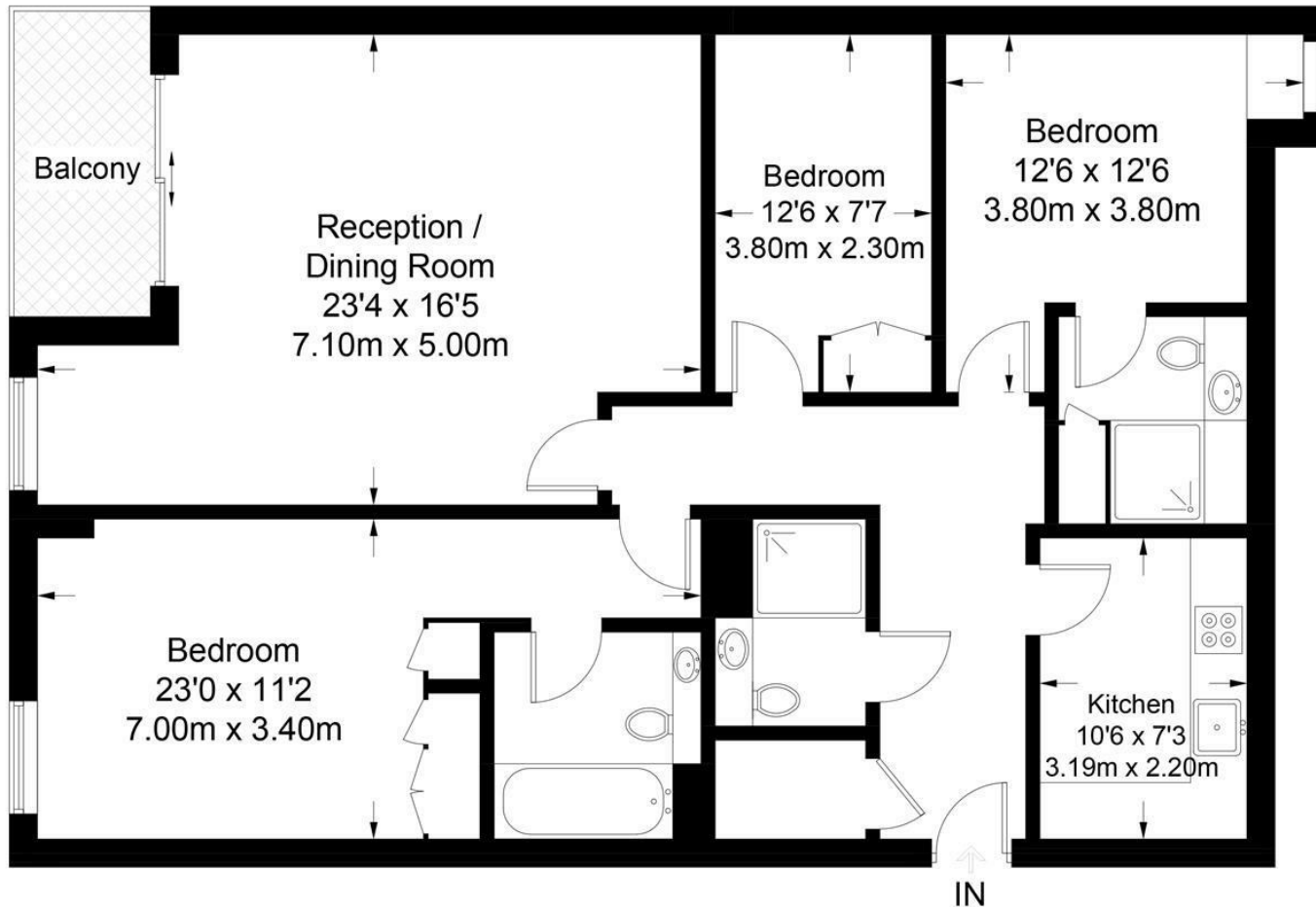
EPC Rating D (68)
Council Tax Band G (London Borough of Westminster)
Minimum Term 12 months
Deposit 5 Weeks

- Spacious 2/3 Bedroom Apartment
- 1st Floor (Lift)
- 1140 Square Feet (105.9 Sq.M)
- Separate Modern Integrated Kitchen
- Good Size Reception Room
- Available: 19th October 2024
- 24 Hour Concierge
- Secure Underground Parking
- Moments From The Transport Links Of St James' Park, Westminster and Victoria



Bentinck House

Approximate Gross Internal Area = 1140 sq ft / 105.9 sq m



First Floor

Not to scale, for guidance only and must not be relied upon as a statement of fact.
All measurements and areas are approximate only and have been prepared in accordance with the current edition of the RICS Code of Measuring Practice.

