



47 Marsham Street, Westminster
London SW1P

GARTONJONES.COM



47 Marsham Street, Westminster
London, SW1P

GARTON JONES.COM

49 Marsham Street Lettings:
London +44 (0) 20 7340 0480
SW1P 3DP westminster@gartonjones.com
www.gartonjones.com

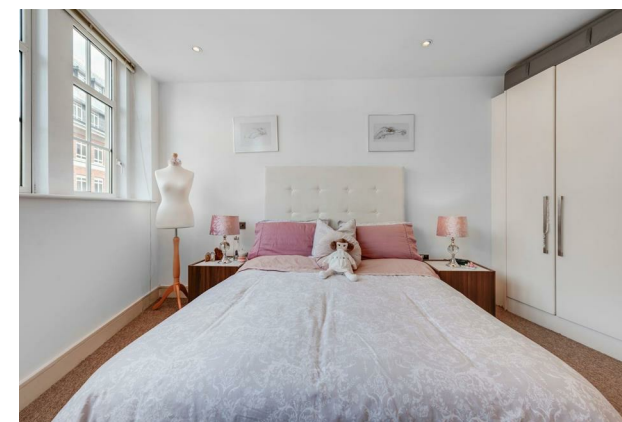
£775 Per Week

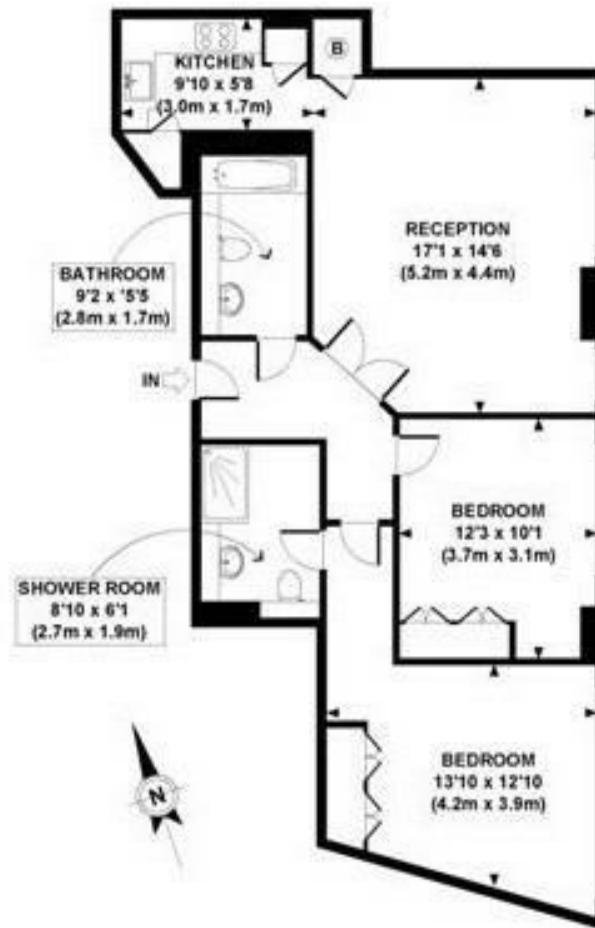
We are pleased offer this 2 double bedroom apartment available to rent in this popular development in Westminster close to the River Thames. The property is offered furnished and measures at approximately 800 Square Feet. The living space comprises of a reception room modern integrated kitchen and 2 modern bathrooms with the master bedroom benefitting from an en-suite. Residents of Romney House benefit from a 24 hour concierge, a well-equipped gymnasium (booking is required via an online service). Marsham Street is well located for access to the renowned local landmarks which include the Houses of Parliament, Westminster Abbey and the Tate Britain Gallery. The local transport links of Victoria Station is nearby providing mainline UK services including the Gatwick Express as well as the underground services of Victoria, Pimlico, St James Park and Westminster. The area has an abundance of amenities such as Sainsbury's, Waitrose, Marks & Spencer's, and a Curzon Cinema plus following on from the extensive regeneration of Victoria street a selection of many new restaurants to compliment existing ones such as Osteria dell'Angolo, The Cinnamon Club and many more. Garton Jones are located on site and are readily available for viewings and a virtual tour is available however current images have some of the tenants belongings displayed which will belong to them.

**Please note that the furniture may differ to that shown in the current photos

Council Tax Band: C (London Borough of Westminster)
Term: 12 Months Minimum Term
5 Week Deposit
EPC C (78)

- 2 Bedroom Apartment
- 800 Square Feet
- Reception Room
- Separate Integrated Kitchen
- 2 Bathrooms (En-Suite)
- Views Onto Communal Gardens
- Available: 23rd October 2024
- 24 Hour Concierge & Residents Gym
- Close To Local Shops & Restaurants & Walking Distance To St James's Park, Westminster & Victoria Transport Links





THIRD FLOOR
GROSS INTERNAL
FLOOR AREA 800 SQ FT

APPROX. GROSS INTERNAL FLOOR AREA 800 SQ FT / 74 SQ M

