



3 Matthew Parker Street, Westminster
London SW1H

GARTONJONES.COM

3 Matthew Parker Street, Westminster
London, SW1H

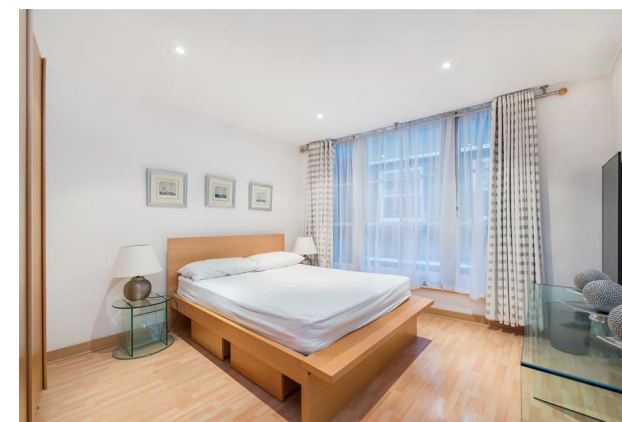
GARTON JONES.COM

49 Marsham Street Lettings:
London +44 (0) 20 7340 0480
SW1P 3DP westminster@gartonjones.com
www.gartonjones.com

£625 Per Week

We are pleased to offer this 1 double bedroom apartment available to rent of approx.545sq.ft (50.6sq.m) in this popular secure development located within the division bell of the Houses of Parliament. The apartment is offered furnished and further benefits from an open plan reception room with a smart integrated kitchen with Kuppertsbusch integrated appliances, a modern full bathroom with a separate walk in shower and a double bedroom with fitted wardrobes. Central Buildings offers residents a 24 hour concierge and lift access to all floors. Matthew Parker Street is well located for easy access to St James's Park and Westminster transport links in addition to the many shops, bars and restaurants of Victoria Street. The Tate Britain Gallery and Chelsea College of Arts are within close proximity as well convenient access to the educational institutions of Westminster School, Imperial College, King's College and the LSE.

- 1 Double Bedroom
- 545sq.ft (50.6sq.m)
- Open Plan Reception Room
- Modern Kitchen
- Bathroom
- 24 Hour Concierge
- Within The Division Bell for the Houses of Parliament
- Walking Distance to St James's Park & Westminster
- Close to the Shops, Bars & Restaurants of Victoria Street

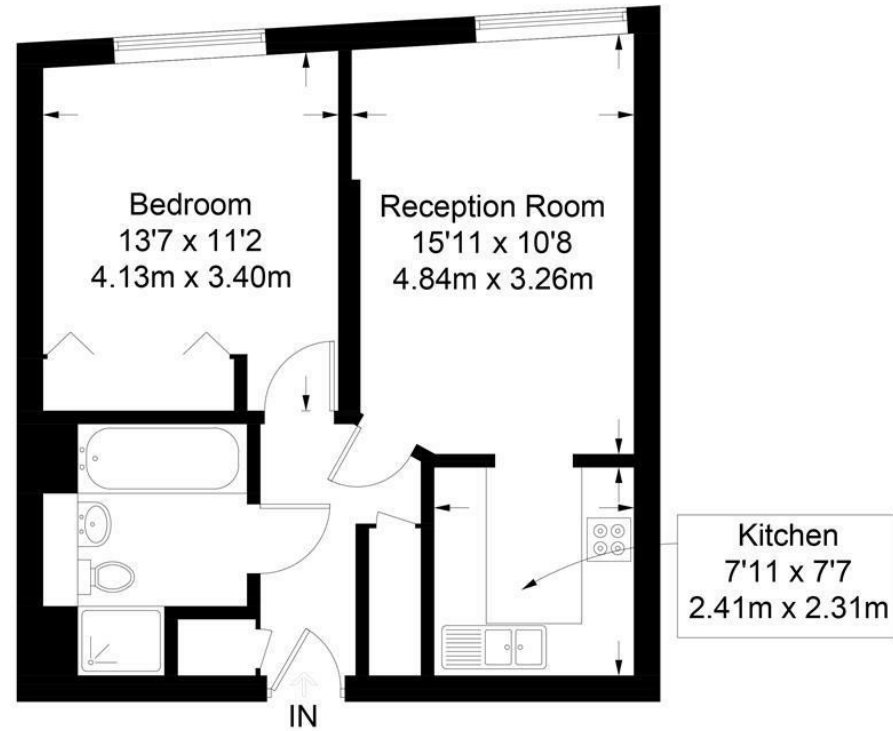


**Please note that the furniture may slightly differ to that shown in the current photos

Security Deposit 5 Weeks
Council Tax Band F (London Borough of Westminster)
Minimum Term 12 months
EPC Rating C (69)

Central Buildings

Approximate Gross Internal Area = 545 sq ft / 50.6 sq m



Ground Floor

Not to scale, for guidance only and must not be relied upon as a statement of fact.
All measurements and areas are approximate only and have been prepared in
accordance with the current edition of the RICS Code of Measuring Practice.

