



Thirleby Road, Westminster
London SW1P

GARTON JONES.COM



Thirleby Road, Westminster
London, SW1P

GARTON JONES.COM

49 Marsham Street Lettings:
London +44 (0) 20 7340 0480
SW1P 3DP westminster@gartonjones.com
www.gartonjones.com

£625 Per Week

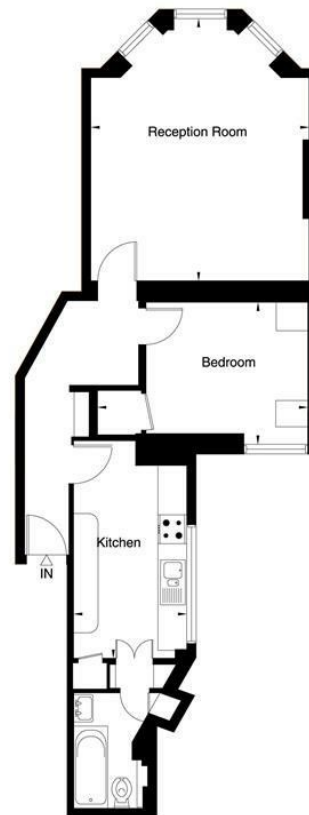
A spacious one double bedroom apartment available to rent within this popular period development in the heart of Westminster. The property has been redecorated throughout with the living space comprising of a large reception room, separate kitchen, bathroom and has double built-in wardrobes to the bedroom. Further benefits include excellent storage throughout, period features, high ceilings and an on-site concierge. The apartment is offered fully furnished and is located behind Victoria Street which is extremely convenient for access to many of the renowned local landmarks which include the Houses of Parliament, Westminster Abbey and the Tate Britain Gallery. The local transport links of Victoria Station are nearby providing mainline UK services including the Gatwick Express as well as the underground services of Victoria, Pimlico, St James Park and Westminster. The area has an abundance of amenities such as Sainsbury's, Waitrose, Marks & Spencer's, and a Curzon Cinema plus following on from the extensive regeneration of Victoria street a selection of many new restaurants to compliment existing ones such as The Cinnamon Club and many more. Distinguished hotels like The Wellington, The Goring, St Ermins', The Westminster (with STK onsite) are all within very close proximity. There is easy access to universities such as Chelsea College of Arts, LSE and King's College.

- One Bedroom Apartment
 - 717 Square Feet (67 Sq.M)
 - Reception Room
 - Separate Kitchen
 - Daytime Porter
 - Furnished
 - Available Immediately
 - Walking Distance To The Amenities Of Victoria Street
 - Moments From The Transport Links Of St James' Park, Victoria And Westminster
-

**Please note furniture may differ to that shown in the current photos.

Minimum Term 12 months
Council Tax Band E (London Borough of Westminster)
Security Deposit 5 Weeks
EPC Rating C (69)

Gross internal area (approx.)
67 sq metres (717 Sq ft)
For identification only, Not to Scale



Ground Floor

GARTON JONES.COM

