



Marsham Street, Westminster
London SW1P

GARTON JONES.COM



Marsham Street, Westminster
London, SW1P

GARTON JONES.COM

49 Marsham Street Sales +44 (0) 20 7340 0480
London westminster@gartonjones.com
SW1P 3DP www.gartonjones.com

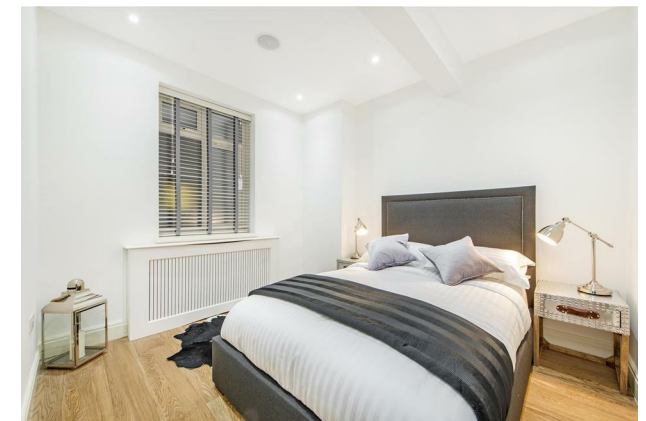
£750 Per Week

A bright and beautifully presented 2 double bedroom apartment to rent of approx. 711sq.ft (66.1sq.m) located in this sought after art deco building in the heart of Westminster close to the River Thames, Tate Gallery and Houses of Parliament. This furnished property further comprises of an open plan reception room with a smart fitted kitchen, 2 shower rooms (1 en-suite to master bedroom), wood flooring and good storage including wardrobes to both bedrooms. Marsham Court is a secure building with a 24 hour concierge and is located on Marsham Street which is extremely convenient for access to many of the renowned local landmarks which include Westminster Abbey, Tate Britain Gallery and the River Thames. There are an abundance of amenities and restaurants such as Osteria dell'Angolo, The Cinnamon Club, Visconti of Westminster (Italian Fine Dining & Cocktail Bar based onsite), the Ivy Bar and Grill and Yaatra based in the Old Westminster Fire Station. You are just a short walk away from the Chelsea College of Arts and St Johns Smith Square Concert Halls offering a variety of classical musical performances. The local transport links of Victoria Station is nearby providing mainline UK services including the Gatwick Express as well as the underground services of Victoria, Pimlico, St James Park and Westminster. The Garton Jones Westminster office is also located on Marsham Street so we are readily available for viewings.

**Please note that the furniture may differ to that shown in the current photos

Deposit 5 Weeks
Minimum Term 12 Months
Council Tax Band F (London Borough of Westminster)
EPC Rating: C (74)

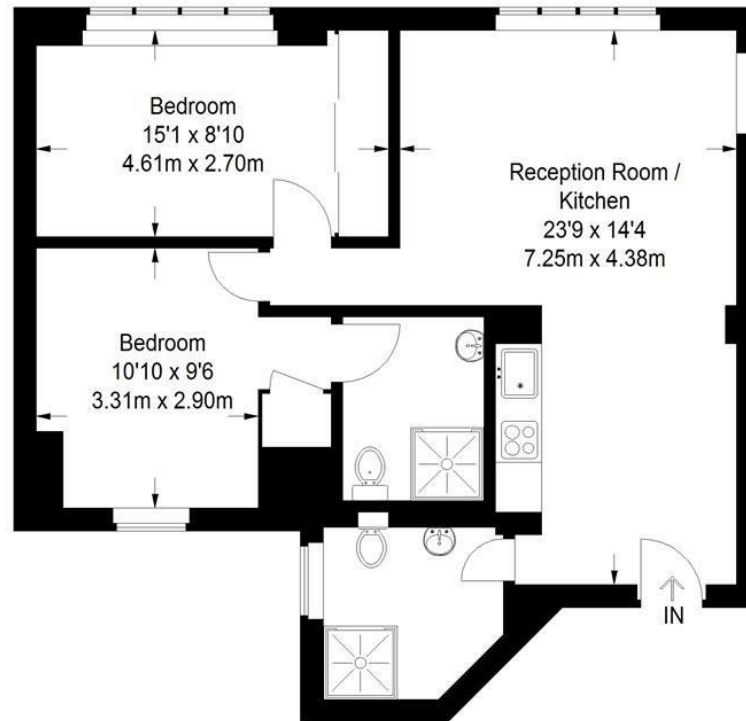
- 2 Bedroom Apartment
- 711 Sq. ft (66.1 sq. m)
- Dual Aspect Open Plan Reception Room
- Integrated Kitchen
- 2 Bathrooms (1 En-Suite)
- Furnished
- Available: 4th September 2024
- 24 Hour Concierge
- Moments From Local Amenities
- Walking Distance to St James's Park, Westminster, Pimlico & Victoria Transport Services



EPC certificate available on request.

Marsham Court

Approximate Gross Internal Area
711 sq ft / 66.1 sq m



Ground Floor

