



79 Marsham Street, Westminster
London SW1P

GARTONJONES.COM



79 Marsham Street, Westminster
London, SW1P

GARTON JONES.COM

49 Marsham Street Lettings:
London +44 (0) 20 7340 0480
SW1P 3DP westminster@gartonjones.com
www.gartonjones.com

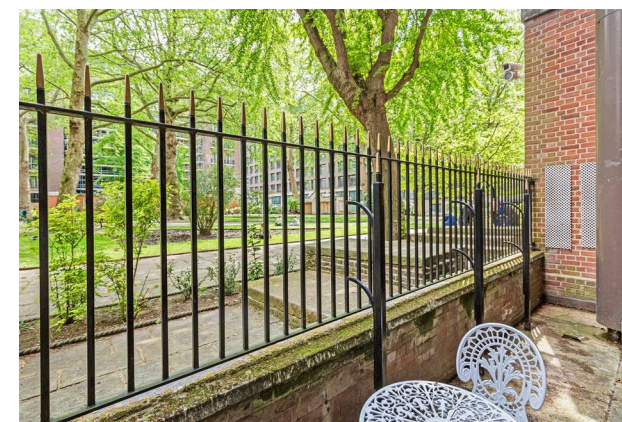
£650 Per Week

We are pleased to offer this spacious 1 bedroom apartment located in this luxury development in the heart of Westminster. The accommodation comprises of living room with views overlooking St Johns Gardens with direct access to a private patio, a separate modern integrated kitchen, large bedroom with fitted wardrobes and a modern bathroom. Residents enjoy a 24 hour concierge, business suite and access to an excellent residents gymnasium with Jacuzzi, Sauna and Treatment Rooms. Marsham Street is centrally located and is just a short distance away from Whitehall, The Houses of Parliament, Westminster Abbey and Buckingham Palace as well as the Tate Gallery and Chelsea College of Arts. The transport links of St James's Park, Westminster and Victoria which are all just a stone's throw away as well a selection of bus services to The City and The West End. In the surrounding area there is a choice from a variety of amenities and a selection of many restaurants and cafes. Garton Jones are located next to the development so are readily available for viewings.

**Please note that the furniture may differ to that shown in the current photos as the Landlord is going to provide new furniture

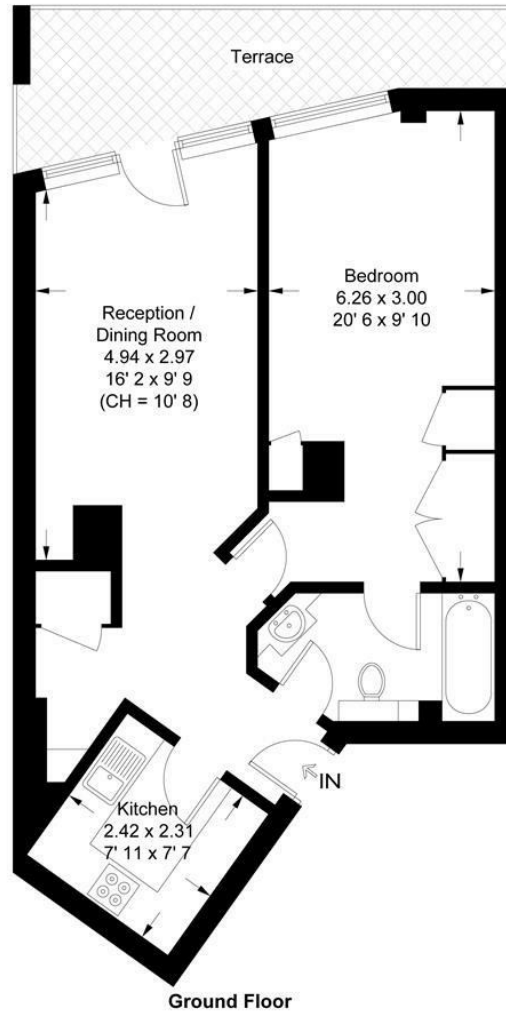
Minimum Term 12 Months
Deposit 5 Weeks
Council Tax Band G (London Borough of Westminster)
EPC Rating D (68)

- 1 Bedroom Apartment
- Reception Room
- Separate Integrated Kitchen
- Modern Bathroom
- Private Patio
- Available: 19th August 2024
- High Ceilings Throughout
- 24 Hour Concierge & Resident Business Suite, Gymnasium with Sauna, Jacuzzi & Treatment Rooms
- Close To Many Local Amenities
- St James' Park, Victoria & Westminster Tube Links Are Within Walking Distance



St. John's Building

Approximate Gross Internal Area = 590 sq ft / 54.8 sq m



This plan is not to scale and must be used as layout guidance only. All measurements and areas are approximate and should not be relied upon to provide accurate information. This plan must not be relied upon when making property valuations, design considerations or any other such relevant decisions. We accept no responsibility or liability (whether in contract, tort or otherwise) in relation to any loss whatsoever arising from or in connection with any use of this plan or the adequacy, accuracy or completeness of it or any information within it.

