



73 Great Peter Street, Westminster  
London SW1P

GARTONJONES.COM

73 Great Peter Street, Westminster  
London, SW1P

GARTON JONES.COM

49 Marsham Street Lettings:  
London +44 (0) 20 7340 0480  
SW1P 3DP westminster@gartonjones.com  
www.gartonjones.com

£700 Per Week

A bright and spacious one bedroom apartment available to let in this modern luxury development. The internal space measures at 556 Square Feet (51.7 Sq. M) and the apartment comprises of an open plan smart integrated kitchen with Siemens appliances, reception room with access to a private balcony, double bedroom with fitted wardrobes, contemporary bathroom, ample storage and wood flooring. Residents will have use of a daytime concierge service, gymnasium and secure bicycle area. 73 Great Peter Street is extremely convenient for access to many of the renowned local landmarks which include the Houses of Parliament, Westminster Abbey and the Tate Britain Gallery. The local transport links of Victoria Station are nearby providing mainline UK services including the Gatwick Express as well as the underground services of Victoria, Pimlico, St James Park and Westminster. The area has an abundance of amenities such as Sainsbury's, Waitrose, Marks & Spencer's, House of Fraser and a Curzon Cinema plus following on from the extensive regeneration of Victoria street a selection of many new restaurants to compliment existing ones such as The Cinnamon Club and many more. Distinguished hotels like The Wellington, The Goring, St Ermins', are all within very close proximity. There is easy access to universities such as Chelsea College of Arts, LSE and King's College.

\*\*Please note that the furniture may differ to that shown in the current photos

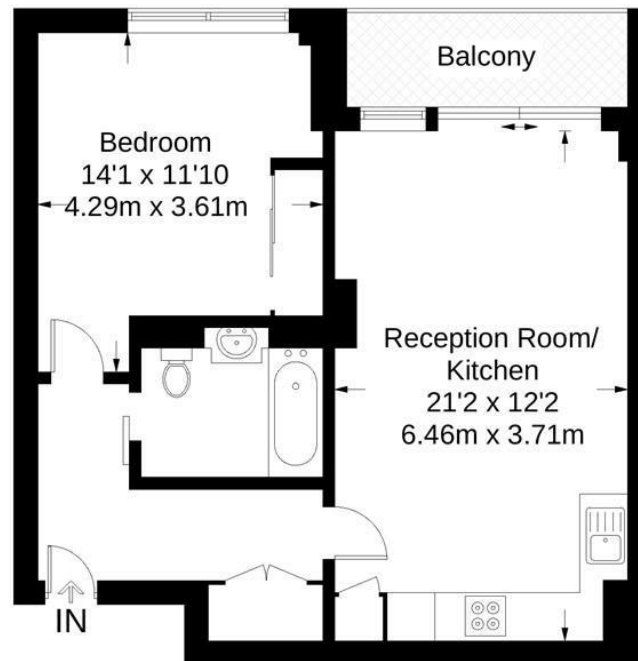
Deposit 5 Weeks  
Minimum Term 12 Months  
Council Tax Band E ( London Borough of Westminster)  
EPC Rating B (84)

- One Bedroom Apartment
- 556 Square Feet (51.7 Sq.M)
- Open Plan Reception Room
- Integrated Kitchen
- Modern Bathroom
- Daytime Concierge & Residents Gymnasium
- Available 20th September 2024
- Moments From Many Amenities
- Close To Transport Links of Victoria, St James Park and Westminster



## Great Peter Street

Approximate Gross Internal Area = 556 sq ft / 51.7 sq m



First Floor

Not to scale, for guidance only and must not be relied upon as a statement of fact.  
All measurements and areas are approximate only and have been prepared in accordance with the current edition of the RICS Code of Measuring Practice.

