



Greycoat Street, Westminster
London SW1P

GARTON JONES.COM



Greycoat Street, Westminster London, SW1P

GARTON JONES.COM

49 Marsham Street Sales +44 (0) 20 7340 0480
London westminster@gartonjones.com
SW1P 3DP www.gartonjones.com

£550 Per Week

We are pleased to offer to let this 1 bedroom apartment located in this attractive red brick mansion block in quiet residential road. This bright apartment is in a very convenient location and offers living space of approx. 456sq.ft (42.Sq.m). Accommodation comprises of a reception room with high ceilings, a separate integrated kitchen, modern bathroom, large master bedroom and a further single bedroom. Greycoat Gardens offers a residents caretaker and is located on Greycoat Street adjoining Rochester Row and Vincent Square and is within easy reach of many local amenities. St James Park, Westminster & Victoria Transport Services and bus links are all within walking distance as are the excellent shopping facilities, bars and restaurants of Victoria Street which offers easy access to the many amenities of Victoria Street as well as the renowned attractions of Big Ben, The Houses of Parliament and St James's Royal Park. The immediate area has an abundance of restaurants such as The Cinnamon Club, the Ivy Bar and Grill and Yaatra based in the Old Westminster Fire Station. You are just a short walk away from the Tate Britain Gallery and St Johns Smith Square which offers a variety of classical musical performances. The transport links of St James's Park, Westminster and Victoria are all within walking distance. Garton Jones are pleased to confirm that they manage this property and are just a short walk from the development.

**Please note that the furniture may differ to that shown in the current photos

Deposit 5 Weeks
Minimum Term 12 Months
Council Tax Band D (London Borough of Westminster)
EPC Rating: E (49)

- Delightful One Bedroom Apartment
- 1st Floor
- Reception Room
- Separate Integrated Kitchen
- Modern Bathroom
- Residents Caretaker
- Available: 9th September 2024
- Red Brick Mansion Block
- Close to Local Amenities Including Shops, Restaurants & Transport Links
- Walking Distance to St James Park, Westminster & Victoria Station



EPC certificate available on request.

Greycoat Gardens, SW1

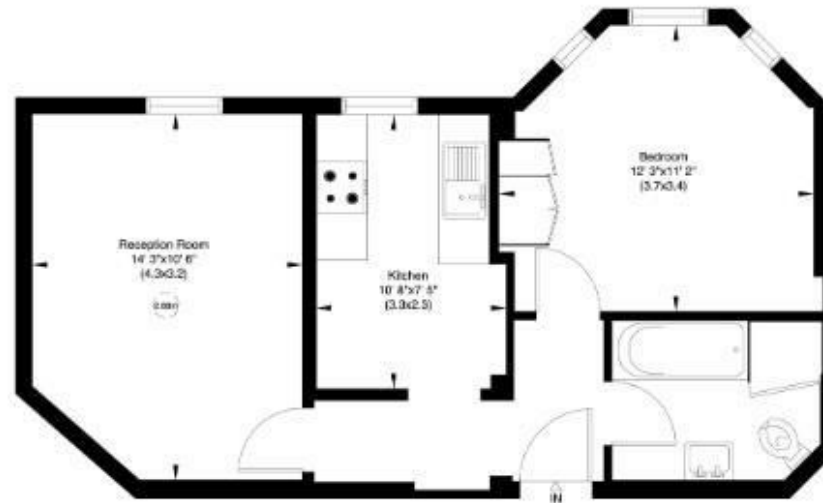
Gross internal area (approx.)

42 Sq m (456 Sq ft)

For identification only. Not to Scale



Floor Plan by **capital group** 020 8571 7722



First Floor

Not to scale, for guidance only and must not be relied upon as a statement of fact. All measurements and areas are approximate only (and have been prepared in accordance with the current edition of the RICS Code of Measuring Practice).

