



27 Monck Street, Westminster
London SW1P

GARTON JONES.COM



27 Monck Street, Westminster
London, SW1P

GARTON JONES.COM

49 Marsham Street Lettings:
London +44 (0) 20 7340 0480
SW1P 3DP westminster@gartonjones.com
www.gartonjones.com

£1,250 Per Week

HMO COMPLIANT - We are pleased to offer this 3 bedroom apartment located on the on the 5th floor (with lift) of this popular development in the heart of Westminster. This apartment is offered furnished and is extremely well proportioned throughout and benefits from a reception/dining room and a separate modern integrated kitchen. There are 3 good size double bedrooms all benefitting from fitted wardrobes, 2 en-suites and a further guest bathroom. Additional benefits include comfort cooling, wood flooring and ample storage throughout. Residents of Asquith House benefit from a 24 hour concierge and the apartment has a secure underground parking space. Monck Street is centrally located and is just a short distance away from Whitehall, The Houses of Parliament, Westminster Abbey and Buckingham Palace as well as the Tate Gallery and Chelsea College of Arts. The transport links of St James's Park, Westminster and Victoria which are all just a stones throw away as well a selection of bus services to The City and The West End. In the surrounding area there is a choice from a variety of amenities and a selection of many restaurants and cafes. Garton Jones are located in the next road to the development so are readily available for viewings.

**Please note that the furniture may differ to that shown in the current photos

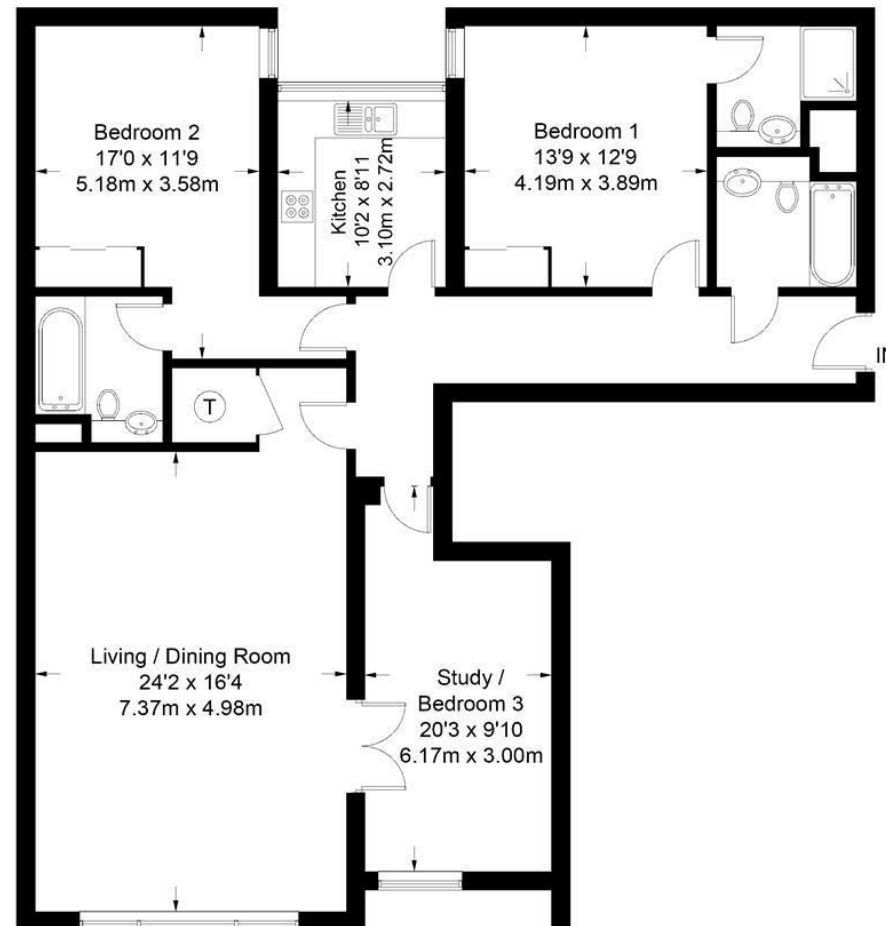
Council Tax Band G (London Borough of Westminster)
Minimum Term 12 months
6 Weeks Deposit
EPC Rating: C (77)

- 3 Bedroom Apartment
- 1334 Square Feet (12.39 Sq.M)
- 5th Floor (Lift)
- Reception Room
- Separate Modern Integrated Kitchen
- 3 Bathrooms (2 En-Suite)
- Secure Underground Parking & 24 Hour Concierge
- HMO COMPLIANT
- Moments From Selection of Amenities
- St James` Park, Victoria & Westminster Tube Links Within Walking Distance



Asquith House

Approximate Gross Internal Area = 1334 sq ft / 123.9 sq m



Not to scale, for guidance only and must not be relied upon as a statement of fact.
All measurements and areas are approximate only and have been prepared in accordance with the current edition of the RICS Code of Measuring Practice.

