



1 Palace Place, London  
SW1E

GARTONJONES.COM



1 Palace Place, London  
, SW1E

GARTON JONES.COM

49 Marsham Street Lettings:  
London +44 (0) 20 7340 0480  
SW1P 3DP westminster@gartonjones.com  
www.gartonjones.com

£950 Per Week

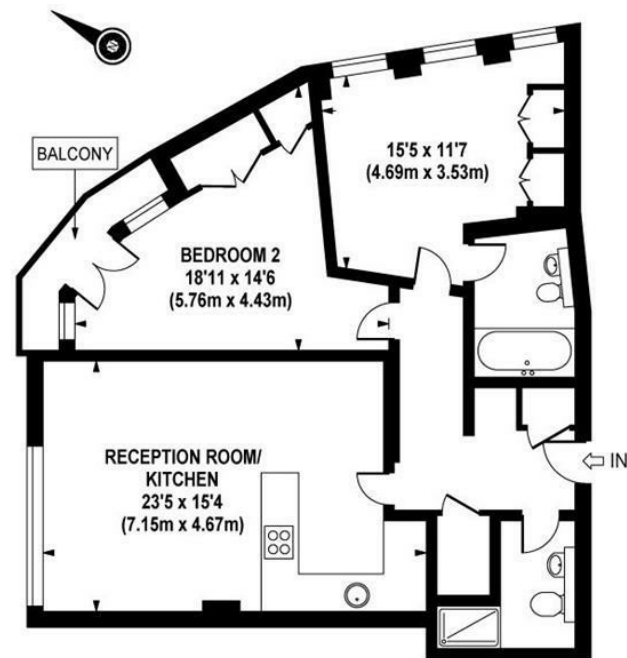
We are pleased to offer this bright and spacious furnished apartment located in this small development neighbouring Buckingham Palace. The living space is well apportioned at 986 Sq. Ft / 91.6 Sq. M and offers natural limestone floors in the kitchen, hallway and wet areas, solid oak flooring to the living and carpeted bedrooms. The accommodation comprises of an open plan modern integrated kitchen and reception, two double bedrooms both with fitted wardrobes and the master offering an en-suite and a further modern guest bathroom. Palace Place is exceptionally well located and just a stone's throw from Victoria Station. You are surrounded by an array of iconic London attractions with 2 royal parks with Buckingham Palace at the end of the road. A plethora of hotels, eateries and retail shops which include The Goring, St Ermins', St James Conrad, The Ivy Victoria, Timmy Green, Aster and Flight Club to name just a few. Garton Jones are pleased to confirm that they manage this property and are just a short walk from the development.

\*\*Please note that the furniture may differ to that shown in the current photos

Council Tax Band G (London Borough of Westminster)  
Deposit 6 Weeks  
Minimum Tenancy 12 Months  
EPC Rating: D (67)

- 2 Bedroom Apartment
- 3rd Floor (Lift)
- 986 Square Feet (91.60 Sq. M)
- Open Plan Reception
- Modern Integrated Kitchen with Breakfast Bar
- 2 Bathrooms (1 En-Suite)
- 24 Hour Concierge
- Furnished & Available: 25th September 2024
- Stones Throw From Victoria Station
- Selection of Shops, Bars and Restaurants Close By





APPROX. GROSS INTERNAL AREA 986 sq.ft / 91.60 sq.m

