



76 Marsham Street, Westminster  
London SW1P

GARTONJONES.COM



76 Marsham Street, Westminster  
London, SW1P

GARTON JONES.COM

49 Marsham Street Lettings:  
London +44 (0) 20 7340 0480  
SW1P 3DP westminster@gartonjones.com  
www.gartonjones.com

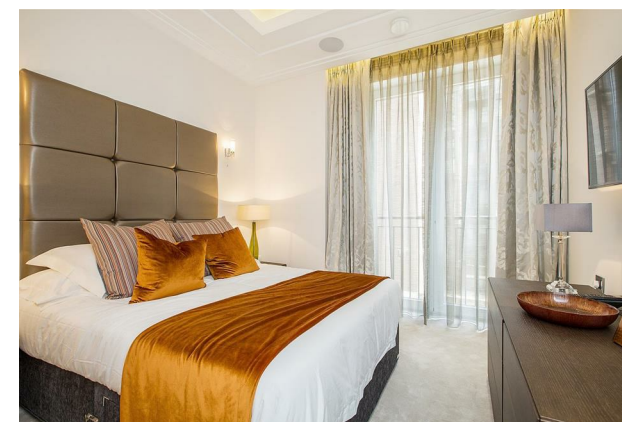
£1,050 Per Week

We are pleased to offer this 2 double bedroom apartment available to rent in this modern and highly sought after development, located in the heart of Westminster and just moments from the River Thames. The accommodation offers high ceilings with an open plan reception room with a smart integrated kitchen with Miele appliances, the master bedroom has a luxury en-suite bathroom and fitted wardrobes, further double bedroom with fitted storage and guest bathroom. Residents benefit from a grand entrance lobby with a 24 hour concierge. Marsham Street is centrally located and is just a short distance away from Whitehall, The Houses of Parliament, Westminster Abbey, Buckingham Palace and the Tate Gallery. The neighbouring area offers fantastic shopping services of Regents Street, Oxford Street, Mayfair and Knightsbridge. The transport links of St James's Park, Pimlico, Westminster and Victoria are all within walking distance. The surrounding area also offers a variety of retail stores, a Curzon Cinema following on from the extensive regeneration of Victoria street a selection of many new restaurants which include Aster, M Victoria, The Ivy Victoria, Flight Club Victoria and many more.

\*\*Please note that the furniture may differ to that shown in the current photos

Council Tax Band F (London Borough of Westminster)  
Minimum Term 12 months  
6 Weeks Deposit  
EPC Rating: 84 (B)

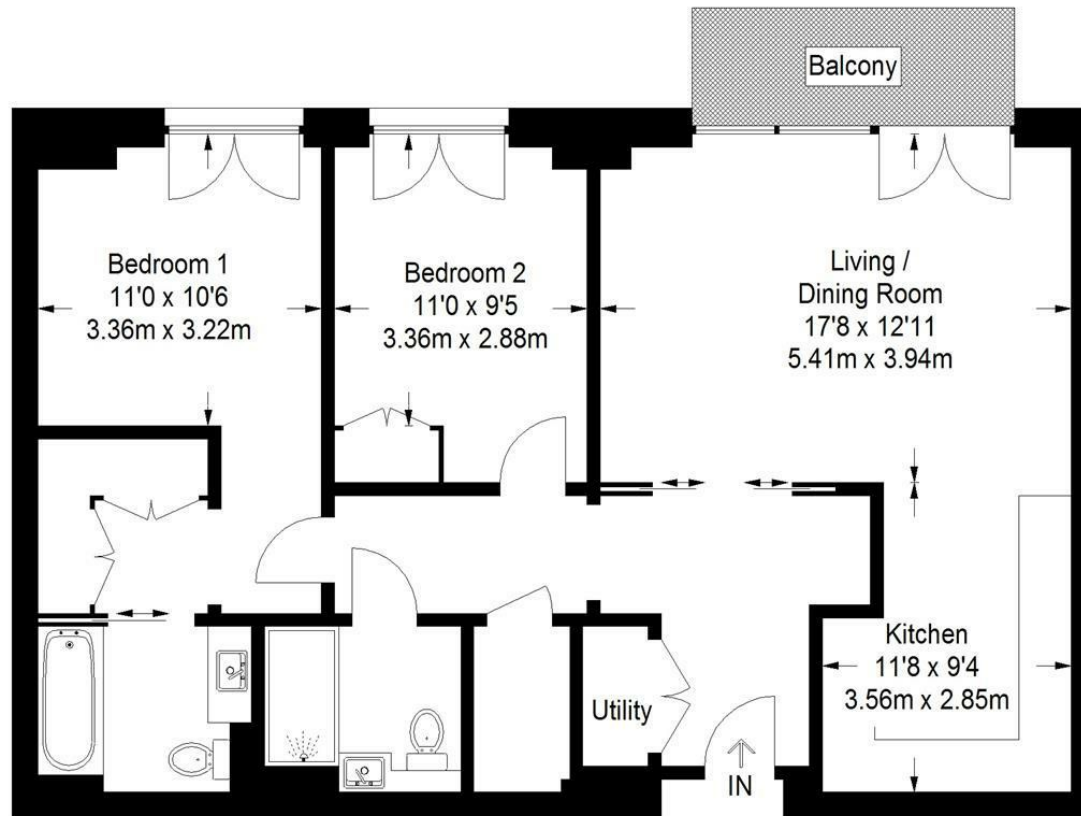
- 2 Double Bedroom Apartment
- 928sq.ft (86.2sq.m)
- 2nd Floor (With Lift)
- Open Plan Reception Room
- Smart Integrated Kitchen
- Large Private Balcony
- 2 Luxury Bathrooms (1 En-Suite)
- Beautifully Furnished & Available: 11th September 2024
- 24 Hour Concierge
- Close To St James' Park, Victoria & Westminster Transport Links



# Drake House



Approximate Gross Internal Area  
928 sq ft / 86.2 sq m



Second Floor

