



18 Rampayne Street, Pimlico  
London SW1V

GARTONJONES.COM

18 Rampayne Street, Pimlico  
London, SW1V

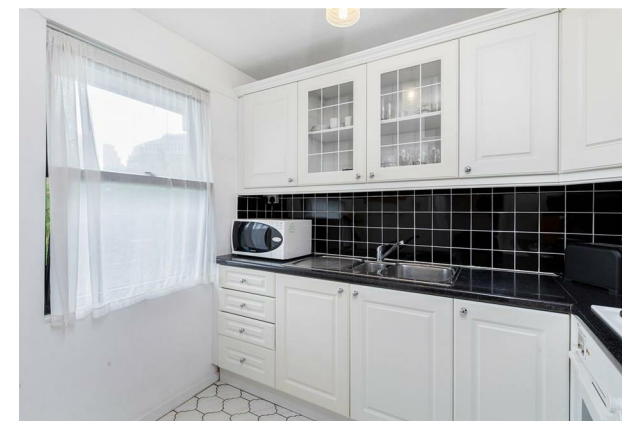
GARTON JONES.COM

49 Marsham Street Lettings:  
London +44 (0) 20 7340 0480  
SW1P 3DP westminster@gartonjones.com  
www.gartonjones.com

£475 Per Week

We are pleased to offer this well presented one bedroom apartment located on the 3rd floor (with lift) in this established development moments from Pimlico Tube Station. This bright property is offered furnished and also includes heating and hot water charges within the rent, the accommodation comprises of a good size reception room, a separate integrated kitchen, ample storage and a bathroom with shower over bath. Longleat House forms part of the popular Lillington Gardens development which is within a few minutes' walk of the River Thames and Tate Britain. Victoria Station and the many amenities of Pimlico are all within easy reach. Graton Jones manage this property and are readily available for viewings.

- One Bedroom Apartment
- 3rd Floor
- Living Room
- Separate Kitchen
- Furnished
- Modern Bathroom With Shower Over Bath
- Available: 11th September 2024
- Moments From Pimlico Tube Station, The River Thames And Tate Britain
- Easy Access To Vauxhall And Victoria



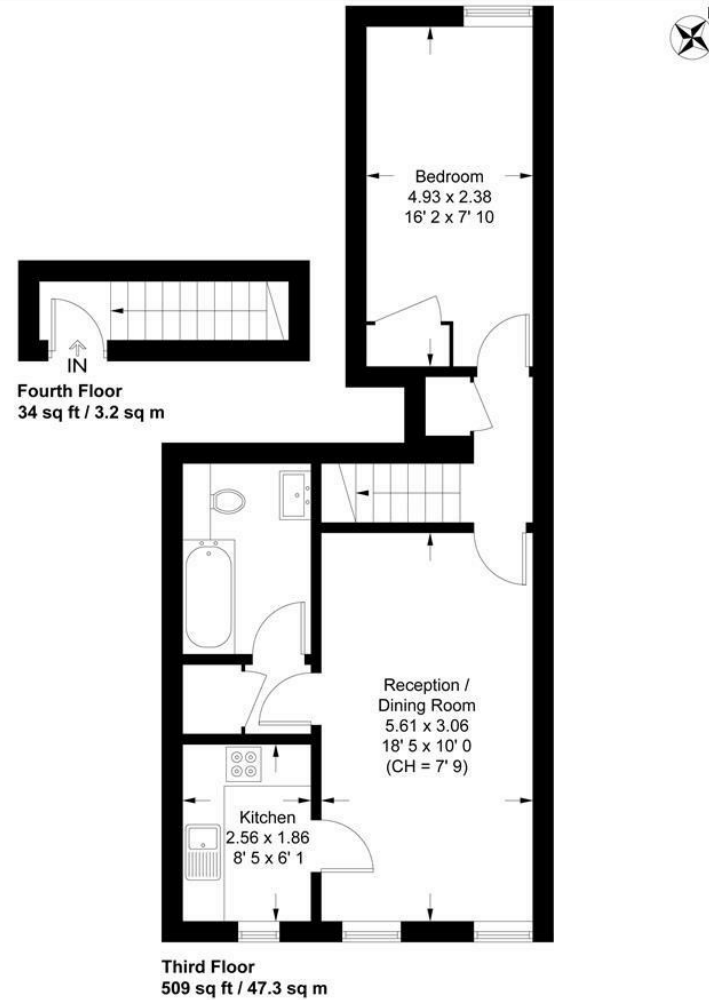
\*\*Please note that the furniture may differ to that shown in the current photos

Minimum Term 12 Months  
Deposit 5 Weeks  
Council Tax Band C (London Borough Of Westminster)  
EPC Rating: C (77)

**Longleat House**

Approximate Gross Internal Area = 543 sq ft / 50.5 sq m

GARTON JONES  
LONDON



This plan is not to scale and must be used as layout guidance only. All measurements and areas are approximate and should not be relied upon to provide accurate information. This plan must not be relied upon when making property valuations, design considerations or any other such relevant decisions. We accept no responsibility or liability (whether in contract, tort or otherwise) in relation to any loss whatsoever arising from or in connection with any use of this plan or the adequacy, accuracy or completeness of it or any information within it.



