



70 Horseferry Road, Westminster
London SW1P

GARTONJONES.COM



70 Horseferry Road, Westminster
London, SW1P

GARTON JONES.COM

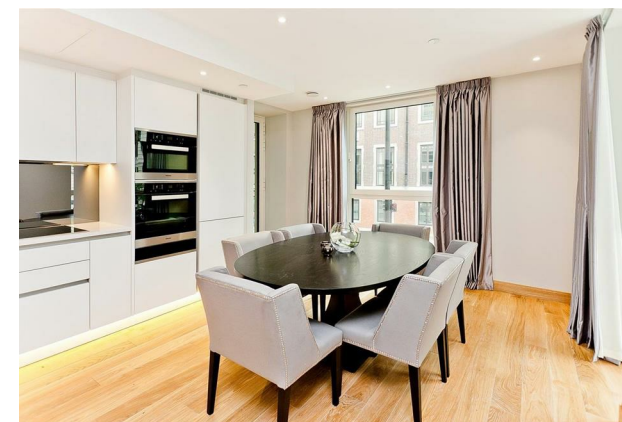
49 Marsham Street Lettings:
London +44 (0) 20 7340 0480
SW1P 3DP westminster@gartonjones.com
www.gartonjones.com

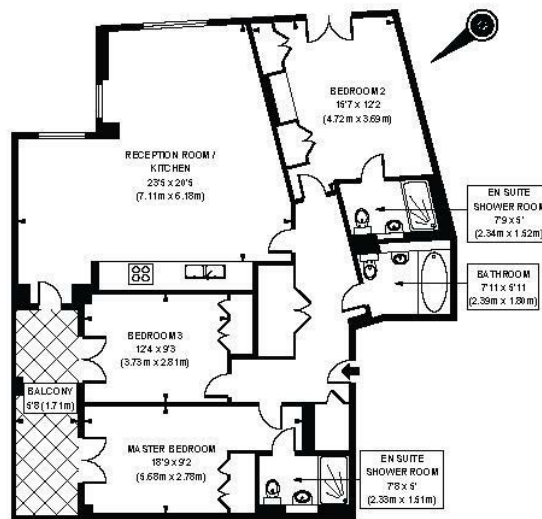
£1,380 Per Week

A beautifully presented 3 bedroom apartment available to let in this modern popular development located in the heart of Westminster just moments away from the River Thames. This bright and spacious apartment of approx. 1173sq.ft (109.02sq.m) is located on the 1st floor and comprises of a smart kitchen with Miele integrated appliances, an open plan reception with access to a private balcony, there are 3 double bedrooms with the master and second bedroom benefitting from contemporary en-suite bathrooms and all 3 bedrooms have ample fitted wardrobes. Additional features include underfloor heating and a secure underground parking space. Residents will benefit from an array of amenities including a 24 hour concierge, a fully equipped fitness suite and access to an attractive landscaped courtyard garden with water feature. The Courthouse is fortunate to be in a superb Westminster location surrounded by an array of iconic London landmarks with Big Ben, Houses of Parliament and the Tate Gallery. A plethora of hotels, eateries and retail shops which include The Goring, St Ermins', St James Conrad, The Ivy Victoria, Timmy Green, Aster and Flight Club to name just a few. Just a short walk away is the Chelsea College of Arts and St Johns Smith Square Concert Halls offering a variety of classical musical performances.

Council Tax Band G (London Borough of Westminster)
Minimum Term 12 months
6 Weeks Deposit
EPC B (86)

- 3 Bedroom Apartment
- 1173 Sq. ft (109 Sq.)
- 1st Floor (Lift)
- Integrated Modern Kitchen
- 3 Luxury Bathrooms (2 En-Suites)
- Available: 9th August 2024
- 2 Balconies
- Secure Underground Parking
- 24 Hour Concierge, Fully Equipped Gymnasium and Communal Garden With Water Feature
- Walking Distance to St James's Park, Westminster & Victoria Transport Links





FIRST FLOOR

APPROX GROSS INTERNAL FLOOR AREA 1173 sq. ft / 109.02 sq. m

Floorplan is for illustrative purposes only and is not to scale.
Every attempt has been made to ensure the accuracy of the floorplan shown, however all measurements, fixtures, fittings and data shown are an approximate interpretation for illustrative purposes only.
Liability for errors, omissions or misstatement through negligence or otherwise is hereby excluded.



