



161 Millbank, Westminster
London SW1P

GARTON JONES.COM



161 Millbank, Westminster
London, SW1P

GARTON JONES.COM

49 Marsham Street Sales +44 (0) 20 7340 0480
London westminster@gartonjones.com
SW1P 3DP www.gartonjones.com

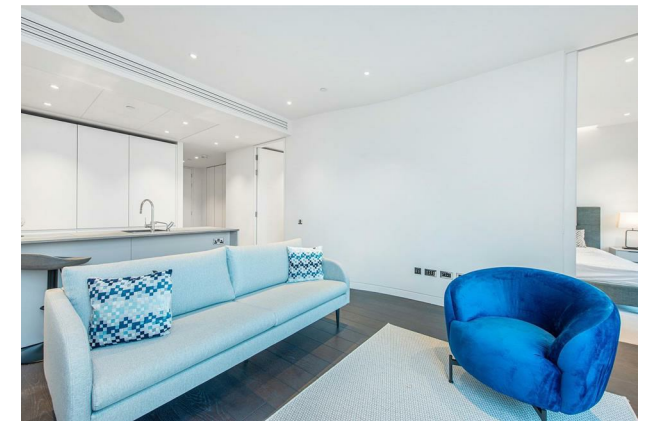
£775 Per Week

We are pleased to offer to rent this 1 bedroom apartment located on the 5th floor (with lift) of Riverwalk, a stunning new development situated on the banks of the River Thames by Vauxhall Bridge in Westminster. This bright and spacious apartment further comprises of a bright reception room, a smart Kitchen with Miele integrated appliances, a good size double bedroom with fitted wardrobes and a contemporary bathroom. Additionally there is comfort cooling, underfloor heating in the wet room and a fully integrated Crestron home automation and entertainment system. Residents of Riverwalk enjoy exclusive private facilities including a fitness suite overlooking the Thames and a 24 hour concierge. The development is well located for access to the renowned local landmarks which include the Houses of Parliament, Westminster Abbey and the Tate Britain Gallery. The local transport links of Pimlico and Victoria Station is nearby providing mainline UK services including the Gatwick Express as well as the underground services of Victoria and Pimlico. Garton Jones' Westminster office is located close by so are readily available for viewings. **Please note that the landlord requests payments in advance only.

**Please note that the furniture may differ to that shown in the current photos

Minimum Term 8 Months
Deposit 5 Weeks
Council Tax Band F (London Borough of Westminster)
EPC Rating B (86)

- One Bedroom Apartment
- 5th Floor (Lift)
- 578 Sq. Ft (53.7 Sq. M)
- Open Plan Reception Room
- Kitchen with Miele Integrated Appliances
- Furnished
- Available: 14th August 2024
- 24 Hour Concierge & Residents Gym
- Moments From Transport Links of Pimlico & Victoria
- Close To A Selection Of Amenities

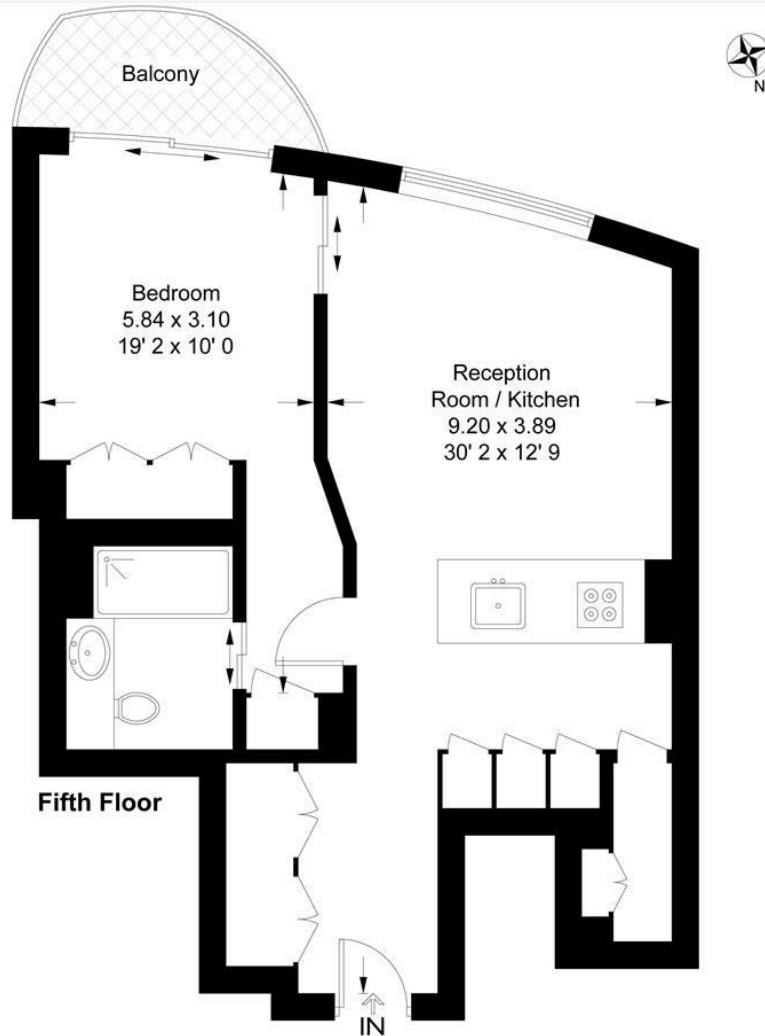


EPC certificate available on request.

Riverwalk

Approximate Gross Internal Area = 578 sq ft / 53.7 sq m

GARTON JONES
LONDON



This plan is not to scale and must be used as layout guidance only. All measurements and areas are approximate and should not be relied upon to provide accurate information. This plan must not be relied upon when making property valuations, design considerations or any other such relevant decisions. We accept no responsibility or liability (whether in contract, tort or otherwise) in relation to any loss whatsoever arising from or in connection with any use of this plan or the adequacy, accuracy or completeness of it or any information within it.



