



Marsham Street, Westminster
London SW1P

GARTON JONES.COM



Marsham Street, Westminster London, SW1P

GARTON JONES.COM

49 Marsham Street Sales +44 (0) 20 7340 0480
London westminster@gartonjones.com
SW1P 3DP www.gartonjones.com

£525 Per Week

A bright and spacious studio apartment available to rent on the 8th floor (with lift) of this established and very popular development in Westminster, close to the River Thames, Houses of Parliament and Tate Gallery. The apartment is offered furnished and the property offers a separate modern kitchen, reception room and bedroom area with a contemporary bathroom. Marsham Court offers a communal hot water and heating system and a 24 hour concierge and you will be well located to a good selection of local amenities including shops and many popular restaurants. The transport services of Pimlico, Westminster, St James's Park and Victoria are all within walking distance. Marsham Street is fortunate to be in a superb Westminster location surrounded by an array of iconic London landmarks with Big Ben, Houses of Parliament and the Tate Gallery. A plethora of hotels, eateries and retailers shops which include The Goring, St Ermins, St James Conrad, The Ivy Victoria, Aster and Flight Club to name just a few. Just a short walk away is the Chelsea College of Arts and St Johns Smith Square Concert Halls offering a variety of classical musical performances. Garton Jones manage this apartment and are located on the same road for viewings.

**Please note that the furniture may differ to that shown in the current photos

Council Tax Band E (London Borough of Westminster)
Minimum Term 12 months
Deposit 5 Weeks
EPC Rating: C (75)

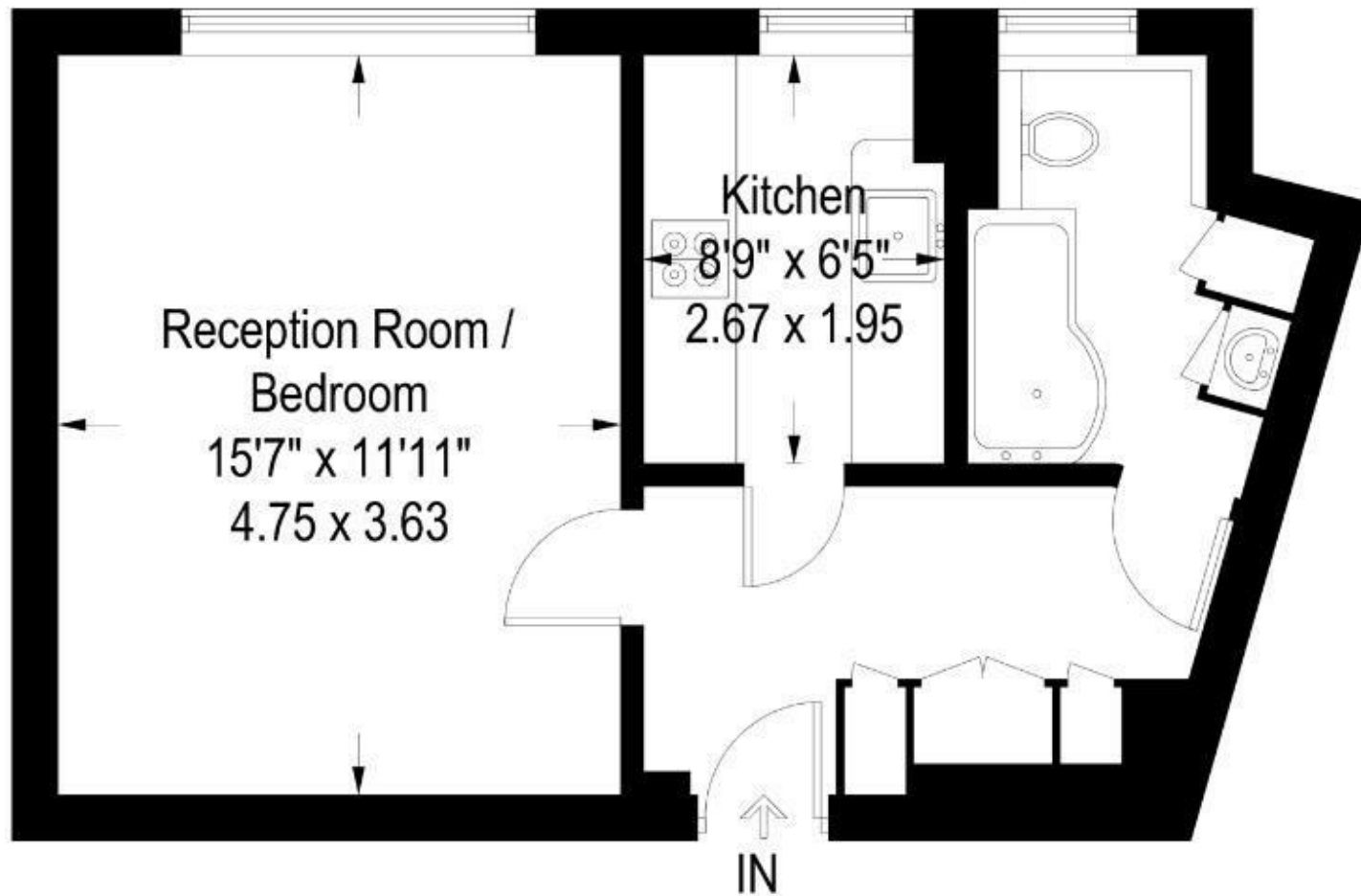
- Modern Studio Apartment
- 8th Floor (With Lift)
- 394 Square Feet (36.6 Sq M)
- Reception and Bedroom Area
- Separate Kitchen
- Contemporary Bathroom
- Available 3rd August 2024
- Communal Hot Water & Heating
- Close to Local Shops & Restaurants
- Walking Distance to St James's Park, Westminster, Pimlico & Victoria Transport Links



EPC certificate available on request.

Marsham Street, Westminster, SW1P

Approximate Gross Internal Area = 394 sq ft / 36.6 sq m



Eighth Floor

