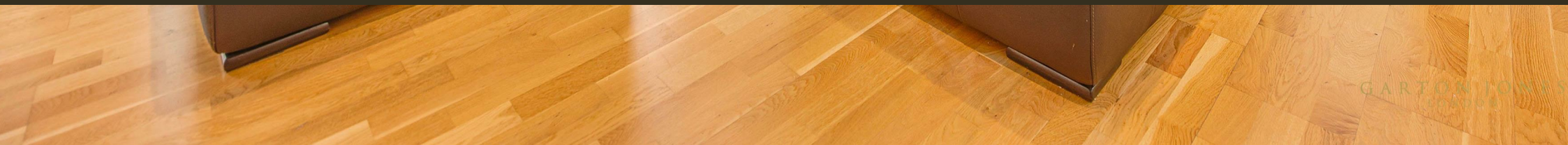




112 Marsham Street, Westminster
London SW1P

GARTON JONES.COM



GARTON JONES
ESTABLISHED 1995

112 Marsham Street, Westminster
London, SW1P

GARTON JONES.COM

49 Marsham Street Lettings:
London +44 (0) 20 7340 0480
SW1P 3DP westminster@gartonjones.com
www.gartonjones.com

£875 Per Week

We are delighted to offer this beautifully presented, spacious 2 bedroom apartment located on the 5th floor (with lift) of this popular development in the heart of Westminster. The light and airy accommodation comprises of an open plan fully fitted modern kitchen and a westerly facing lounge which also has a separate dining area which could also comfortably function as a home office space. There are 2 double bedrooms both with fitted wardrobes and 2 bathrooms with one being a "Jack and Jill" en-suite. Hepburn is just a short walk from the renowned local landmarks which include the Houses of Parliament, Westminster Abbey and the Tate Britain Gallery. The local transport links of Victoria Station are nearby providing mainline UK services including the Gatwick Express as well as the underground services of Victoria, Pimlico, St James Park and Westminster. The area has an abundance of amenities in the immediate area and following on from the extensive regeneration of Victoria street a selection of many restaurants as well as distinguished hotels like The Wellington, The Goring, St Ermins' are all within very close proximity. Garton Jones manage this property and are located on Marsham Street.

**Please note that the furniture may differ to that shown in the current photos

Council Tax Band G (London Borough of Westminster)
Minimum Term 12 Months
Deposit 5 Weeks
EPC Rating: C (78)

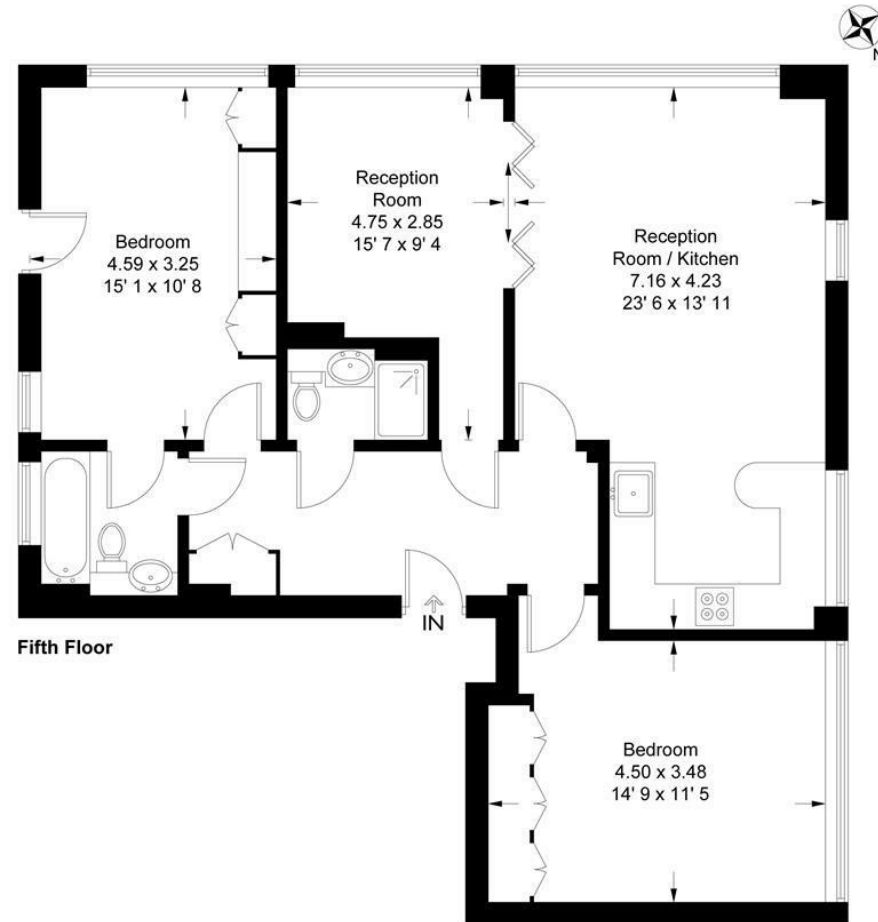
- Bright & Spacious 2 Bedroom Apartment
- 5th Floor (Lift)
- Open Plan Lounge
- Modern Open Plan Kitchen
- Additional Dining Room
- 2 Bathrooms (En-Suite)
- Close To Transport Links
- Video Entry System
- Close to the Houses of Parliament, Tate Britain & The River Thames
- St James' Park, Victoria & Westminster Tube Links Within Walking Distance



Hepburn House

Approximate Gross Internal Area = 936 sq ft / 87 sq m

GARTON JONES
LONDON



This plan is not to scale and must be used as layout guidance only. All measurements and areas are approximate and should not be relied upon to provide accurate information. This plan must not be relied upon when making property valuations, design considerations or any other such relevant decisions. We accept no responsibility or liability (whether in contract, tort or otherwise) in relation to any loss whatsoever arising from or in connection with any use of this plan or the adequacy, accuracy or completeness of it or any information within it.



