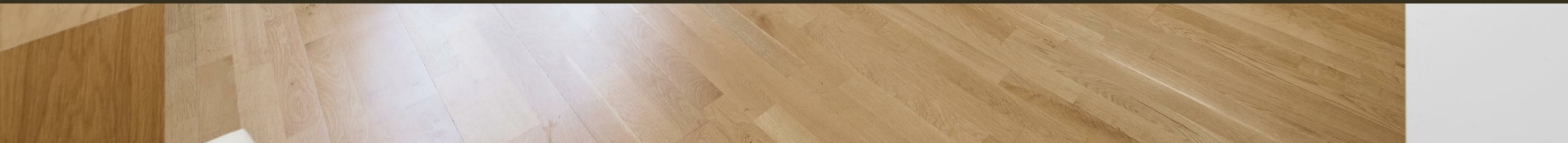




47 Marsham Street, Westminster  
London SW1P

GARTON JONES.COM



47 Marsham Street, Westminster  
London, SW1P

GARTON JONES.COM

49 Marsham Street Lettings:  
London +44 (0) 20 7340 0480  
SW1P 3DP westminster@gartonjones.com  
www.gartonjones.com

£750 Per Week

We are pleased to offer this 2 bedroom apartment available to let located in the heart of Westminster. The internal living space comprises of an open plan reception room with views onto Tufton Street which offers a quiet aspect. There is an open plan integrated kitchen, 2 bedrooms both with fitted wardrobes and the master benefitting from an en-suite and further guest bathroom. As a resident of Romney House you will also have the use of a 24 hour concierge and a well-equipped gymnasium (online booking is required). The development is extremely convenient for access to many of the renowned local landmarks which include the Houses of Parliament, Westminster Abbey, Tate Britain Gallery and the River Thames. The local transport links of Victoria Station is nearby providing mainline UK services including the Gatwick Express as well as the underground services of Victoria, Pimlico, St James Park and Westminster. The area has an abundance of amenities such as Sainsbury's, Waitrose, Marks & Spencer's and a Curzon Cinema plus following on from the extensive regeneration of Victoria street a selection of many new restaurants to compliment existing ones such as The Cinnamon Club, Osteria Dell'angolo and many more. Just a short walk away is the Chelsea College of Arts and St Johns Smith Square Concert Halls offering a variety of classical musical performances.

\*\*Please note that some the furniture may differ to that shown in the current photos

Security Deposit 5 Weeks  
Minimum Term 8 Months  
Council Tax Band F (London Borough of Westminster)  
EPC Rating C (80)

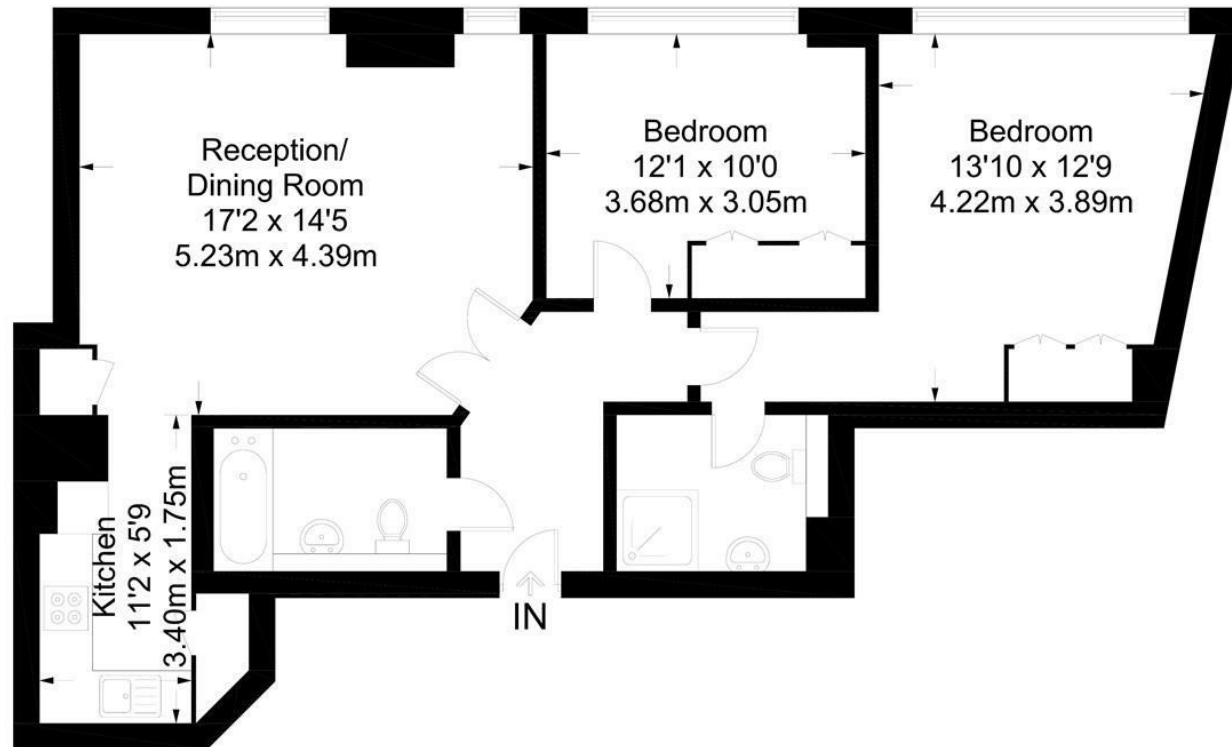
- 2 Bedroom Apartment
- 2nd Floor (Lift)
- 818 Square Feet
- Open Plan Reception Room
- Modern Integrated Kitchen
- 2 Bathrooms (1 En-Suite)
- 24 Hour Concierge
- Resident's Gymnasium
- Close to St James Park & Westminster Tube Services
- Moments From Excellent Local Shopping Facilities



# Romney House



Approximate Gross Internal Area = 818 sq ft / 76.0 sq m



Not to scale, for guidance only and must not be relied upon as a statement of fact.  
All measurements and areas are approximate only and have been prepared in accordance with the current edition of the RICS Code of Measuring Practice.



