



Marsham Street, Westminster
London SW1P

GARTONJONES.COM



Marsham Street, Westminster London, SW1P

GARTON JONES.COM

49 Marsham Street Lettings:
London +44 (0) 20 7340 0480
SW1P 3DP westminster@gartonjones.com
www.gartonjones.com

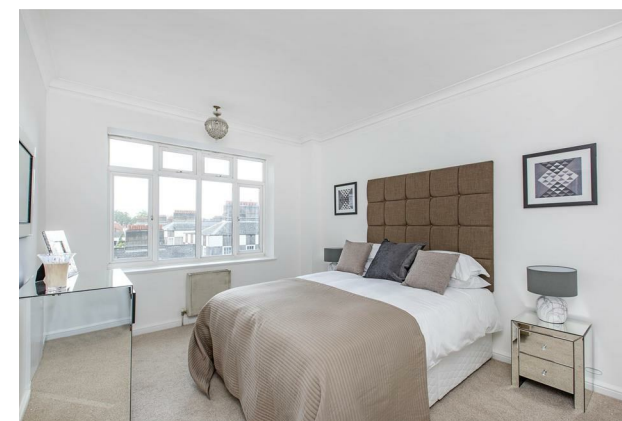
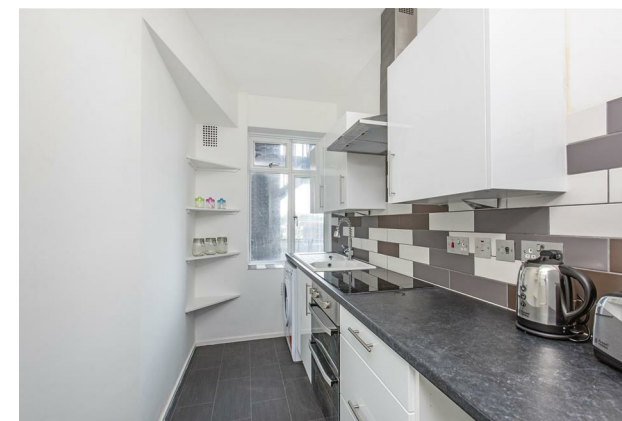
£635 Per Week

A bright and spacious 1 double bedroom apartment available to rent on the 6th floor (with lift) of this established and very popular development in Westminster, close to the River Thames, Houses of Parliament and Tate Gallery. The apartment is offered furnished and the property offers a separate modern kitchen, reception room with access to Juliette style balcony. Marsham Court has a communal hot water and heating system and a 24 hour concierge and you will be well located to a good selection of local amenities including shops and many popular restaurants. The transport services of Pimlico, Westminster, St James's Park and Victoria are all within walking distance. Marsham Street is fortunate to be in a superb Westminster location surrounded by an array of iconic London landmarks with Big Ben, Houses of Parliament and the Tate Gallery. A plethora of hotels, eateries and retails shops which include The Goring, St Ermins', St James Conrad, The Ivy Victoria, Aster and Flight Club to name just a few. Just a short walk away is the Chelsea College of Arts and St Johns Smith Square Concert Halls offering a variety of classical musical performances. Garton Jones manage this apartment and are located on the same road for viewings.

**Please note that the furniture may differ to that shown in the current photos

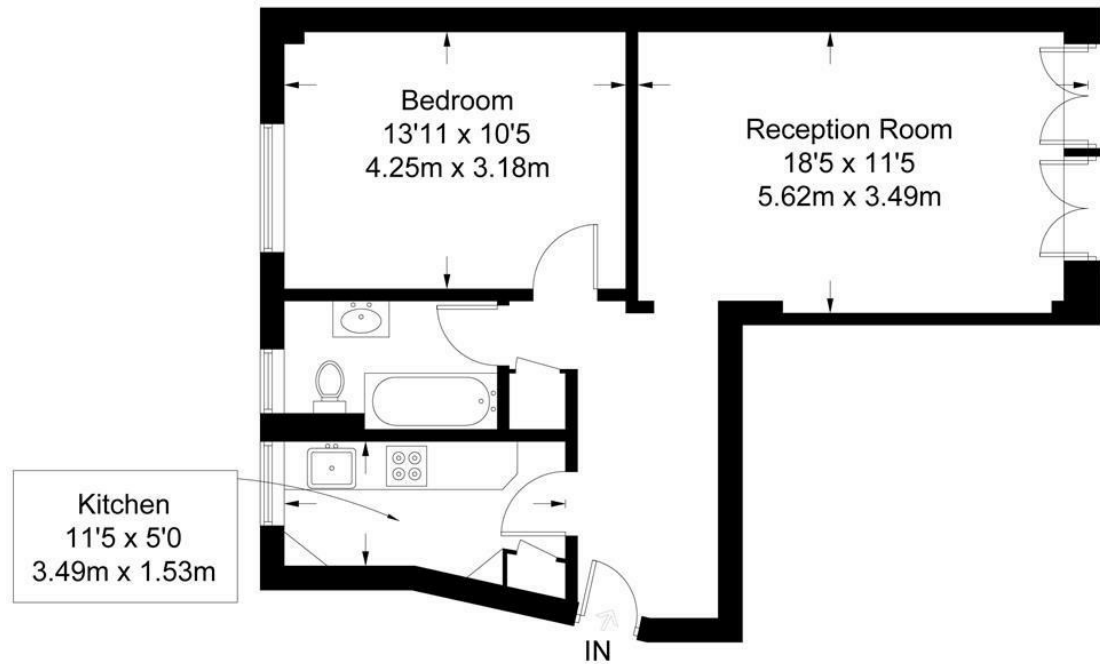
Council Tax Band E (London Borough of Westminster)
Minimum Term 12 months
Deposit 5 Weeks
EPC Rating: C (71)

- One Bedroom Apartment
- 6th Floor (With Lift)
- 573 Square Feet (53.2 Sq M)
- Reception Room
- Separate Kitchen
- Bathroom
- Available 25th July 2024
- Communal Hot Water & Heating
- Close to Local Shops & Restaurants
- Walking Distance to St James's Park, Westminster, Pimlico & Victoria Transport Links



Marsham Court

Approximate Gross Internal Area = 573 sq ft / 53.2 sq m



Sixth Floor

