



84 Horseferry Road, Westminster
London SW1P

GARTON JONES.COM



84 Horseferry Road, Westminster
London, SW1P

GARTON JONES.COM

49 Marsham Street Sales +44 (0) 20 7340 0480
London westminster@gartonjones.com
SW1P 3DP www.gartonjones.com

£1,200 Per Week

We are pleased to offer this superb apartment available to let located on the 2nd floor (with lift) of this popular development located in the heart of Westminster. The property is extremely well proportioned measuring at 1419 Square Feet (131.82 Sq.M) and comprises of a reception room with access to a balcony, a separate modern integrated kitchen, there are 3 good size double bedrooms all with fitted wardrobes with the master bedroom benefitting from an en-suite shower room, a further modern guest shower room and a separate WC. As a resident of Cranbrook House you benefit from a 24 hour concierge service and a secure underground parking space. Horseferry Road is extremely convenient for access to the Houses of Parliament, Westminster Abbey and the Tate Britain Gallery. The local transport links of Victoria Station are nearby providing mainline UK services including the Gatwick Express as well as the underground services of Victoria, Pimlico, St James Park and Westminster. The area has an abundance of amenities and restaurants such as The Vincent Rooms, The Cinnamon Club, the Ivy Bar and Grill and Yaatra based in the Old Westminster Fire Station. You are just a short walk away from the Chelsea College of Arts and St Johns Smith Square Concert Halls offering a variety of classical musical performances. Distinguished hotels like The Wellington, The Goring, St Ermins', The Westminster are all within very close proximity.

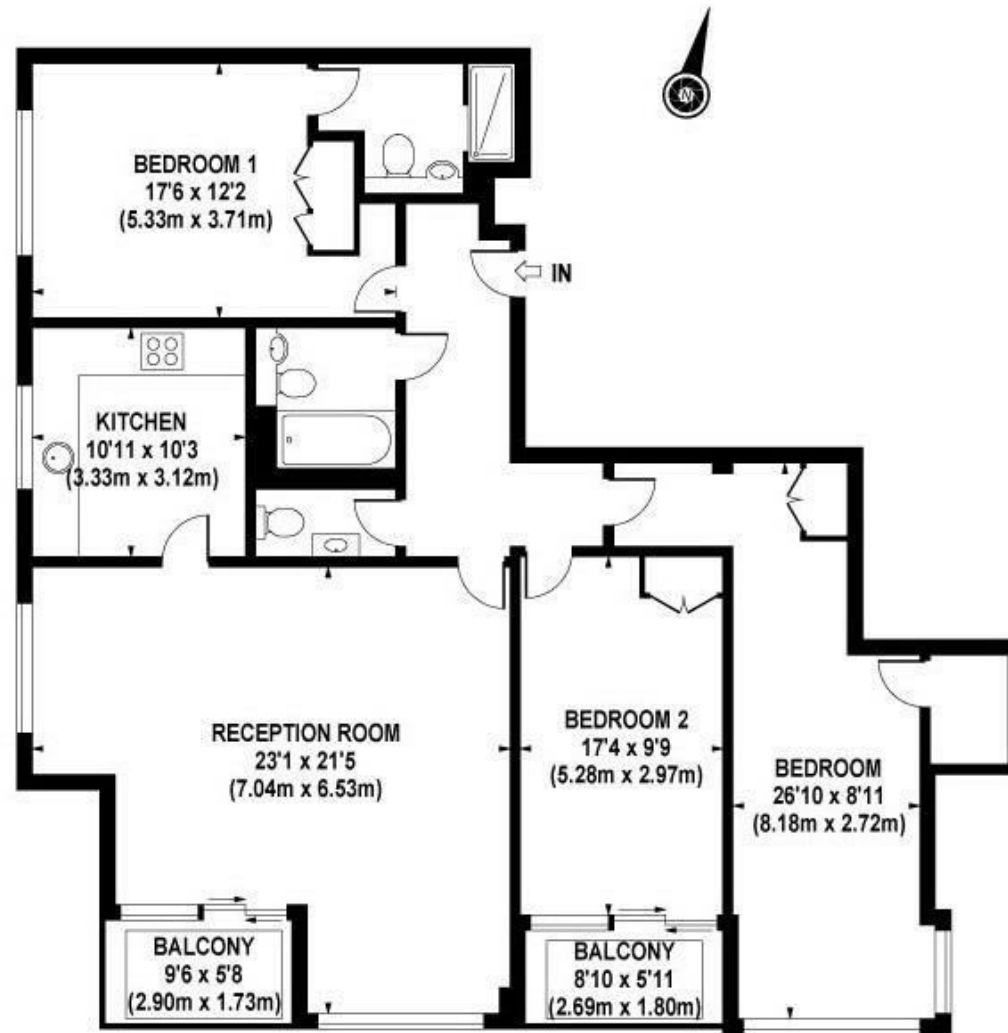
**Please note that the furniture may differ to that shown in the current photos

Security Deposit 6 Weeks
Minimum Term 12 Months
Council Tax Band G (Local Authority City of Westminster)
EPC Rating B (81)

- Extremely Spacious 3 Bedroom Apartment
- 2nd Floor (Lift)
- 1419 Square Feet (131.82 Sq.M)
- Large Reception Room
- Separate Integrated Kitchen
- 2 Bathrooms (En-Suite) & Separate Guest WC
- Balcony & Available Immediately
- 24 Hour Concierge & Secure Underground Parking
- Walking Distance to Westminster, St James's Park & Victoria Transport Links
- Close To Selection Amenities



EPC certificate available on request.



SECOND FLOOR

APPROX. GROSS INTERNAL AREA 1419 sq.ft / 131.82 sq.m

