



John Islip Street, Westminster  
London SW1P

GARTON JONES.COM



John Islip Street, Westminster  
London, SW1P

GARTON JONES.COM

49 Marsham Street Sales +44 (0) 20 7340 0480  
London westminster@gartonjones.com  
SW1P 3DP www.gartonjones.com

£510 Per Week

We are pleased to offer this well-presented bright 1 double bedroom apartment to let of approx. 447sq.ft (41.5sq.m) in this established development. The living accommodation comprises of an open plan reception room with an open plan smart fully fitted kitchen, there is a good size double bedroom with fitted wardrobes, a modern bathroom and a separate storage cupboard in the communal area. Millbank Court is a secure building with 24 hour porterage service with a superb residents communal roof terrace with panoramic views of the London skyline. John Islip Street is just a short walk from the renowned local landmarks which include the Houses of Parliament, Westminster Abbey and the Tate Britain Gallery. The local transport links of Victoria Station are nearby providing mainline UK services including the Gatwick Express as well as the underground services of Victoria, Pimlico, St James Park and Westminster. The area has an abundance of amenities in the immediate area and following on from the extensive regeneration of Victoria street a selection of many new restaurants to compliment existing. Distinguished hotels like The Wellington, The Goring, St Ermins', The Westminster London (Curio Collection by Hilton) are all within very close proximity. There is easy access to universities such as Chelsea College of Arts, LSE and King's College.

\* Internal viewing recommended as the furniture may differ slightly to that of that images displayed

Security Deposit 5 Weeks  
Minimum Term 9 Months  
Council Tax Band D (London Borough of Westminster)  
EPC Rating C (70)

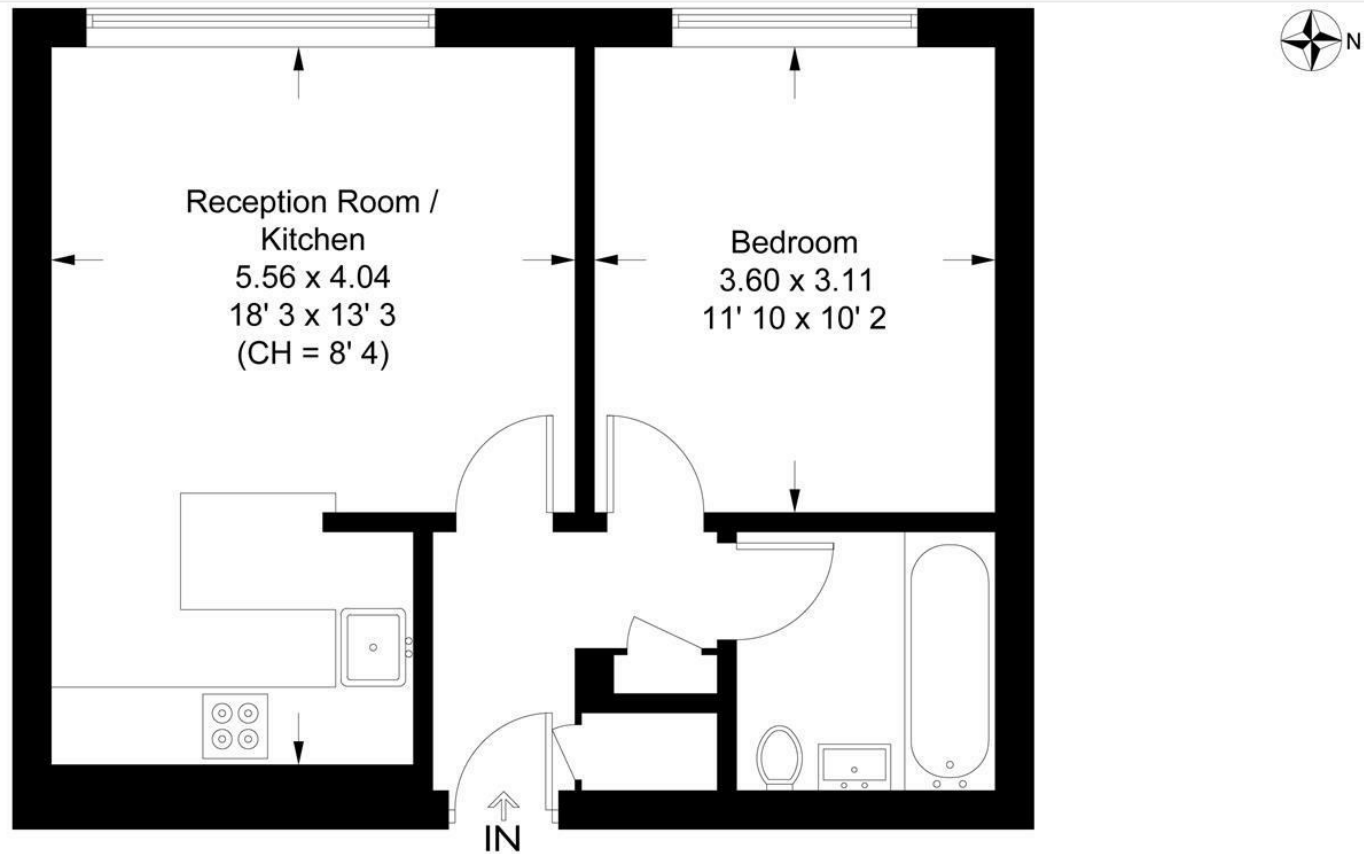
- 1 Double Bedroom
- 447sq.ft (41.5sq.m)
- Reception Room
- Modern Open Plan Kitchen
- Bathroom
- Available Immediately & Including Communal Heating and Hot Water
- 24 Hour Porterage Service
- Residents Communal Roof Garden
- Close to Local Shops, Bars & Restaurants
- Walking Distance to St James's Park, Westminster, Pimlico & Victoria



EPC certificate available on request.

**Millbank Court**

Approximate Gross Internal Area = 447 sq ft / 41.5 sq m

GARTON JONES  
LONDON**Second Floor**

This plan is not to scale and must be used as layout guidance only. All measurements and areas are approximate and should not be relied upon to provide accurate information. This plan must not be relied upon when making property valuations, design considerations or any other such relevant decisions. We accept no responsibility or liability (whether in contract, tort or otherwise) in relation to any loss whatsoever arising from or in connection with any use of this plan or the adequacy, accuracy or completeness of it or any information within it.



