



47 Marsham Street, Westminster
London SW1P

GARTONJONES.COM



47 Marsham Street, Westminster
London, SW1P

GARTON JONES.COM

49 Marsham Street Lettings:
London +44 (0) 20 7340 0480
SW1P 3DP westminster@gartonjones.com
www.gartonjones.com

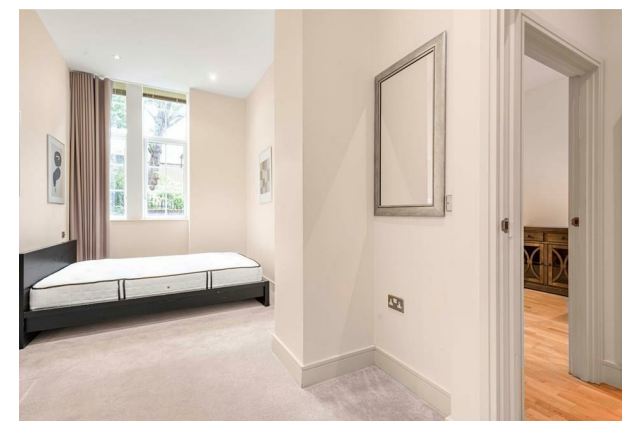
£625 Per Week

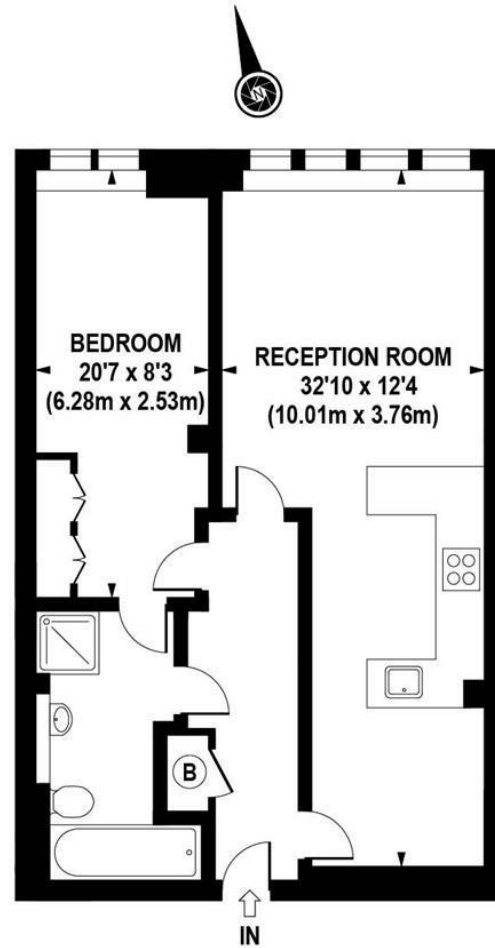
A larger than average 1 bedroom apartment measuring at 711 Sq.ft (66.13 Sq.M) available to let in this popular development in the heart of Westminster. The property offered furnished and is generously proportioned with high ceilings comprising of an open plan reception room with modern integrated kitchen, double bedroom with fitted wardrobes and an a 'jack and jill' bathroom with access from the bedroom and hallway for guests. There is wood flooring to the hallway, living room and a carpeted bedroom. As a resident of Romney House you will also have the use of a 24 hour concierge and a well-equipped gymnasium with a sauna and treatment room. Marsham Street is well located for access to the renowned local landmarks which include the Houses of Parliament, Westminster Abbey and the Tate Britain Gallery. The local transport links of Victoria Station is nearby providing mainline UK services including the Gatwick Express as well as the underground services of Victoria, Pimlico, St James Park and Westminster. The area has an abundance of amenities such as Sainsbury's, Waitrose, Marks & Spencer's, and a Curzon Cinema plus following on from the extensive regeneration of Victoria street a selection of many new restaurants to compliment existing ones such as Osteria dell'Angolo, The Cinnamon Club and many more. Garton Jones are pleased to confirm that they manage this property and are located on site within the development so are readily available to assist with the property ,virtual tour is available.

**Please note that the furniture may differ to that shown in the current photos

Minimum Term 6 Months
Deposit 5 weeks
Council Tax Band F (London Borough of Westminster)
EPC Rating C (73)

- Larger Than Average 1 Bedroom Apartment
- 711 sq.ft (66.13sq.m)
- Open Plan Reception Room
- Smart Integrated Kitchen
- Full Bathroom With Separate Shower & Bath
- Furnished
- 24 Hour Concierge & Residents Gym (**online booking is required)
- Close to Local Amenities Including Shops, Restaurants & Transport Links
- Walking Distance to St James's Park, Westminster and Victoria Station





APPROX. GROSS INTERNAL AREA 711 sq.ft / 66.13 sq.m

