



47 Marsham Street, Westminster
London SW1P

GARTON JONES.COM



47 Marsham Street, Westminster
London, SW1P

GARTON JONES.COM

49 Marsham Street Sales +44 (0) 20 7340 0480
London westminster@gartonjones.com
SW1P 3DP www.gartonjones.com

£750 Per Week

We are pleased to offer this 2 bedroom apartment available to let located in the heart of Westminster. The internal living space comprises of an open plan reception room with views onto the pretty quiet landscaped courtyard gardens, there is an open plan integrated kitchen, 2 bedrooms both with fitted wardrobes and the master benefitting from an en-suite and further guest bathroom. As a resident of Romney House you will also have the use of a 24 hour concierge and a well-equipped gymnasium (online booking is required). The development is extremely convenient for access to many of the renowned local landmarks which include the Houses of Parliament, Westminster Abbey, Tate Britain Gallery and the River Thames. The local transport links of Victoria Station is nearby providing mainline UK services including the Gatwick Express as well as the underground services of Victoria, Pimlico, St James Park and Westminster. The area has an abundance of amenities such as Sainsbury's, Waitrose, Marks & Spencer's and a Curzon Cinema plus following on from the extensive regeneration of Victoria street a selection of many new restaurants to compliment existing ones such as The Cinnamon Club, Osteria Dell'angolo and many more. Just a short walk away is the Chelsea College of Arts and St Johns Smith Square Concert Halls offering a variety of classical musical performances.

**Please note that the furniture may differ to that shown in the current photos

Security Deposit 5 Weeks
Minimum Term 6 Months
Council Tax Band F (London Borough of Westminster)
EPC Rating C (78)

- 2 Bedroom Apartment
- 1st Floor
- 815 Square Feet
- Open Plan Reception Room
- Modern Integrated Kitchen
- 2 Bathrooms (1 En-Suite)
- 24 Hour Concierge
- Gymnasium, Sauna & Treatment Room
- Close to St James Park & Westminster Tube Services
- Moments From Excellent Local Shopping Facilities

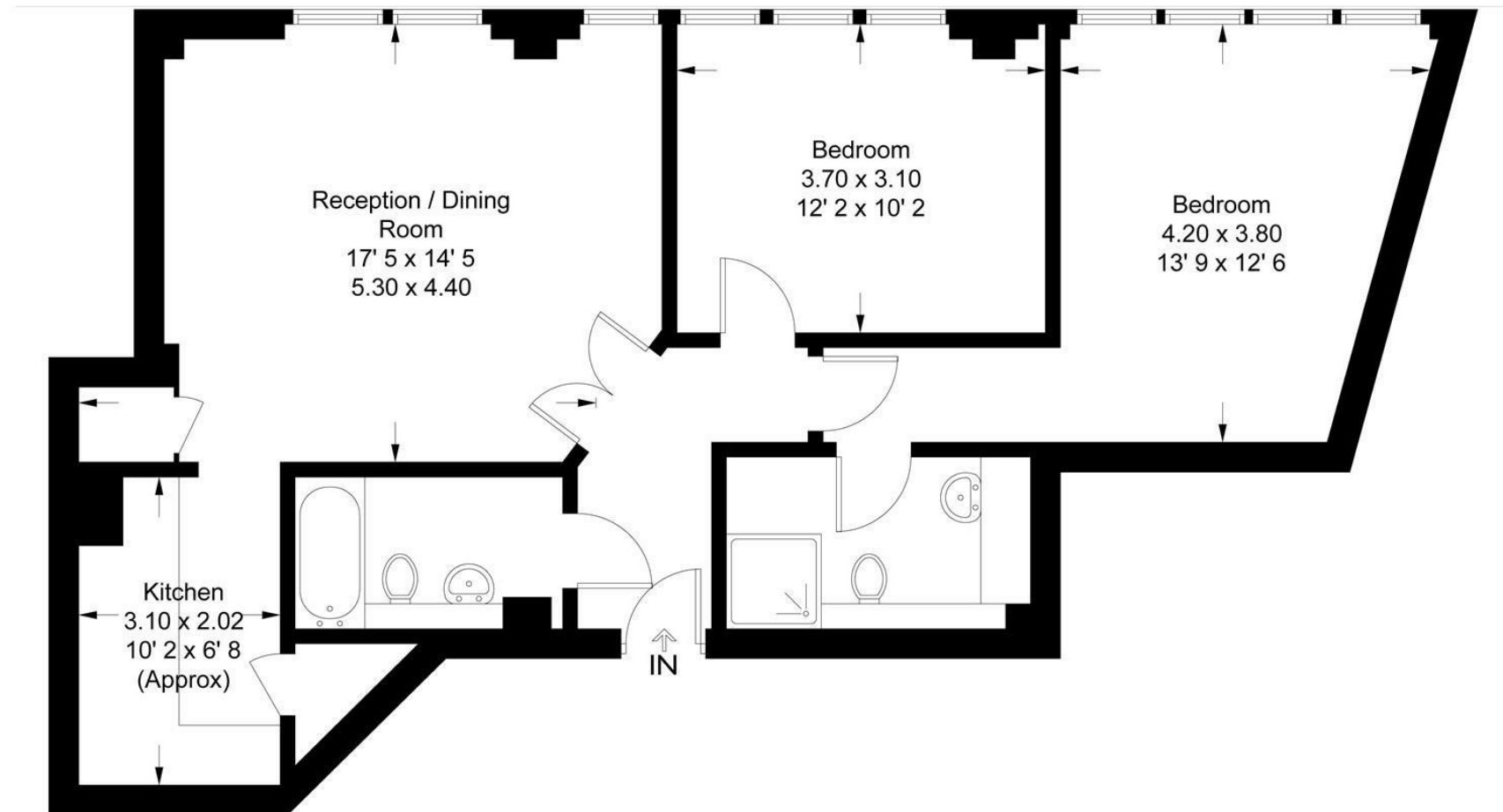


EPC certificate available on request.

Romney House

Approximate Gross Internal Area = 815 sq ft / 75.6 sq m

GARTON JONES
LONDON



This plan is not to scale and must be used as layout guidance only. All measurements and areas are approximate and should not be relied upon to provide accurate information. This plan must not be relied upon when making property valuations, design considerations or any other such relevant decisions. We accept no responsibility or liability (whether in contract, tort or otherwise) in relation to any loss whatsoever arising from or in connection with any use of this plan or the adequacy, accuracy or completeness of it or any information within it.



