



47 Marsham Street, Westminster  
London SW1P

GARTON JONES.COM



47 Marsham Street, Westminster  
London, SW1P

GARTON JONES.COM

49 Marsham Street Sales +44 (0) 20 7340 0480  
London westminster@gartonjones.com  
SW1P 3DP www.gartonjones.com

£795 Per Week

We are pleased offer to let this well presented 2 bedroom apartment located in this popular development in Westminster close to the River Thames. The living space comprises of an open plan integrated kitchen, reception room with access onto private terrace with exceptional views onto Big Ben. There are two double bedrooms with the master benefitting from an en-suite bathroom and a further guest bathroom. Residents of Romney House have use of a 24 hour concierge service and a gymnasium (\*subject to opening hours\*). Marsham Street is extremely convenient for access to many of the renowned local landmarks which include the Houses of Parliament and Westminster Abbey. The local transport links of Victoria Station is nearby providing mainline UK services including the Gatwick Express as well as the underground services of Victoria, Pimlico, St James Park and Westminster. The area has an abundance of amenities and restaurants such as The Vincent Rooms, The Cinnamon Club, the Ivy Bar and Grill and Yaatra based in the Old Westminster Fire Station. Just a short walk away is the Chelsea College of Arts and St Johns Smith Square Concert Halls offering a variety of classical musical performances. Garton Jones are based on site so are readily available for viewings.

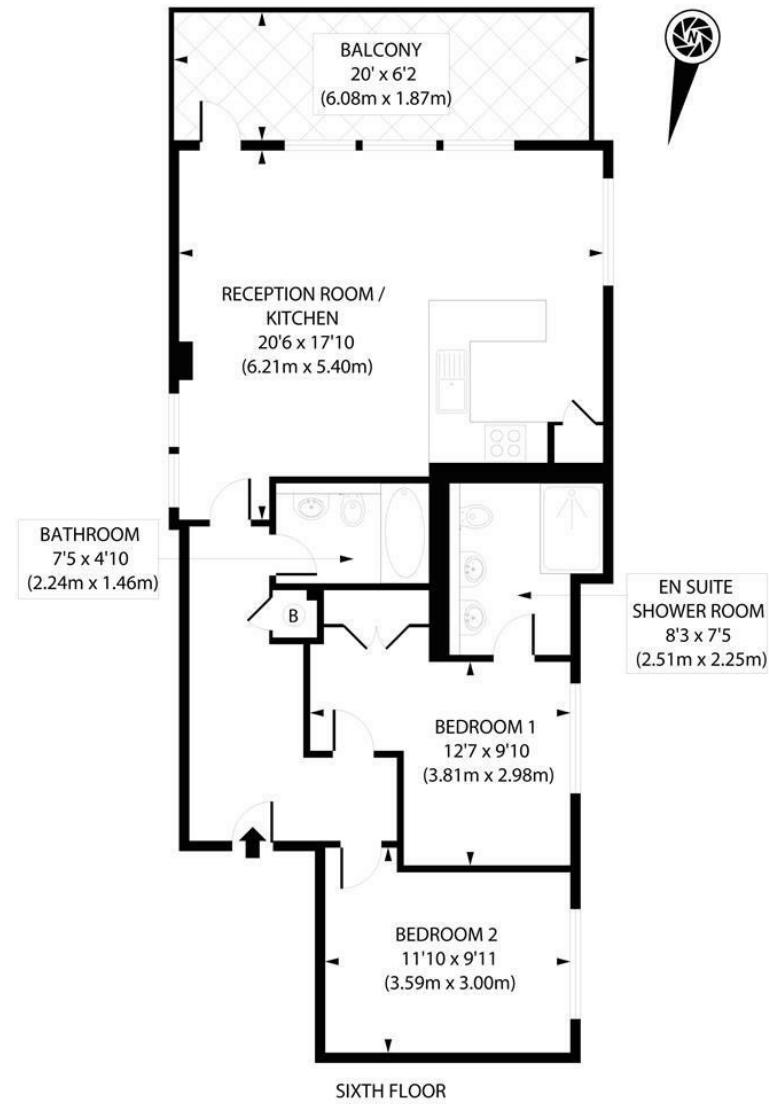
\*\*Please note that some the furniture may differ to that shown in the current photos

Security Deposit 5 Weeks  
Minimum Term 12 Months  
Council Tax Band F (London Borough of Westminster)  
EPC Rating C (73)

- 2 Bedroom Apartment With Stunning Views Onto Big Ben
- 767 Square Feet (71.27 Sq. M)
- 6th Floor (Lift)
- Triple Aspect Reception Room
- Private Terrace With Views Onto Big Ben
- Open Plan Integrated Kitchen
- 2 Bathrooms (En-Suite)
- 24 Hour Concierge & Residents Gym
- Close To Local Shops & Restaurants
- Walking Distance To St James's Park, Westminster & Victoria Transport Links



EPC certificate available on request.



APPROXIMATE GROSS INTERNAL AREA 767 sq. ft / 71.27 sq. m

