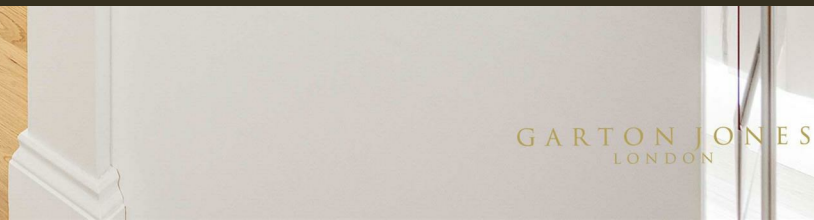




8 Dean Ryle Street, Westminster
London SW1P

GARTON JONES.COM



GARTON JONES
LONDON

8 Dean Ryle Street, Westminster London, SW1P

GARTON JONES.COM

49 Marsham Street Sales +44 (0) 20 7340 0480
London westminster@gartonjones.com
SW1P 3DP www.gartonjones.com

£575 Per Week

We are pleased to offer this beautifully presented 1 bedroom apartment available to let in this sought after development close to the banks of the River Thames. The accommodation measures at 471 Square Feet (43.7 Sq.M) and comprises of an open plan modern integrated kitchen, reception room with access to a balcony. There is a good size bedroom with ample fitted wardrobes and a contemporary bathroom. The apartment has been newly decorated with new carpets and a stylish new contemporary furniture pack. Residents of Westminster Green benefit from a 24 hour concierge, lavish lobby area, business suite and a gymnasium. You will be within walking distance to the amenities of Horseferry Road and Victoria Street which include many shops, a Curzon Cinema and a host of new restaurants. The development is also located next door to the international headquarters of Burberry and the Westminster Hotel. The transport links of St James's Park, Westminster and Victoria are all within walking distance.

**Please note that some the furniture may differ to that shown in the current photos

Deposit 5 Weeks
Minimum Term 6 Months
EPC Rating D (68)
Council Tax Band E (London Borough of Westminster)

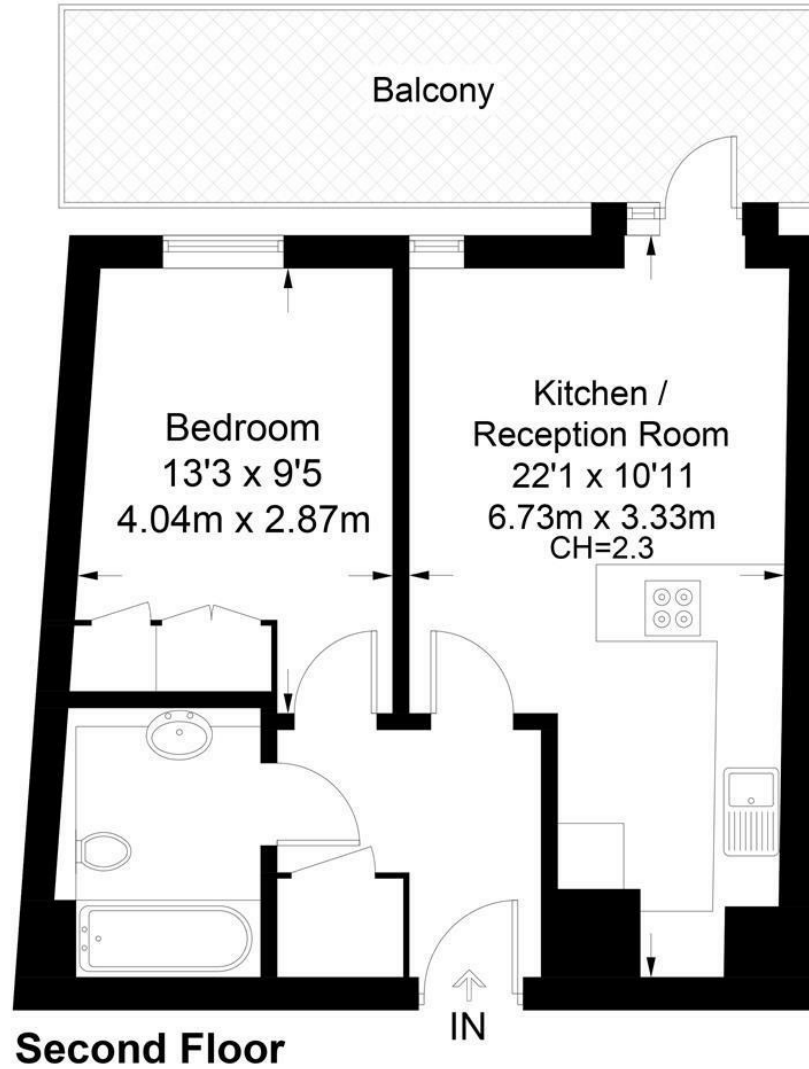
- Newly Refurbished One Bedroom Apartment
- 2nd Floor (Lift)
- 471 Square Feet (43.7 Sq.M)
- Reception Room
- Open Plan Modern Integrated Kitchen
- Large Balcony
- Modern Bathroom
- 24 Hour Concierge & Resident's Gymnasium
- Close to Local Amenities Including Shops and Restaurants
- Walking Distance to St James` Park & Westminster Tube Links



EPC certificate available on request.

Westminster Green

Approximate Gross Internal Area = 471 sq ft / 43.7 sq m



Not to scale, for guidance only and must not be relied upon as a statement of fact.
All measurements and areas are approximate only and have been prepared in accordance with the current edition of the RICS Code of Measuring Practice.

