



68 Vincent Square, Westminster
London SW1P

GARTON JONES.COM

68 Vincent Square, Westminster London, SW1P

GARTON JONES.COM

49 Marsham Street Lettings:
London +44 (0) 20 7340 0480
SW1P 3DP westminster@gartonjones.com
www.gartonjones.com

£630 Per Week

We are pleased to offer this well presented furnished one bedroom apartment located in this modern sought after development. Internal living space measures at 592 Square Feet (55 Sq.M) and all principle rooms within the property overlook the beautiful green of Vincent Square. The property is bright and spacious and further benefits from an open plan reception with modern integrated kitchen, good size double bedroom with fitted wardrobes, modern bathroom, ample fitted storage throughout and wood flooring. 68 Vincent Square is exceptionally well positioned for easy access to the transport links of Pimlico, St James Park, Westminster and Victoria which are all within walking distance. You are surrounded by iconic London landmarks with Big Ben, the Houses of Parliament and the Tate Gallery all on your doorstep. There is an abundance of local amenities including a variety of retail stores along Victoria Street with the Curzon Cinema and many restaurants including the Ivy Bar and Grill and Yaatra based in the Old Westminster Fire Station.

**Please note that the furniture may differ to that shown in the current photos

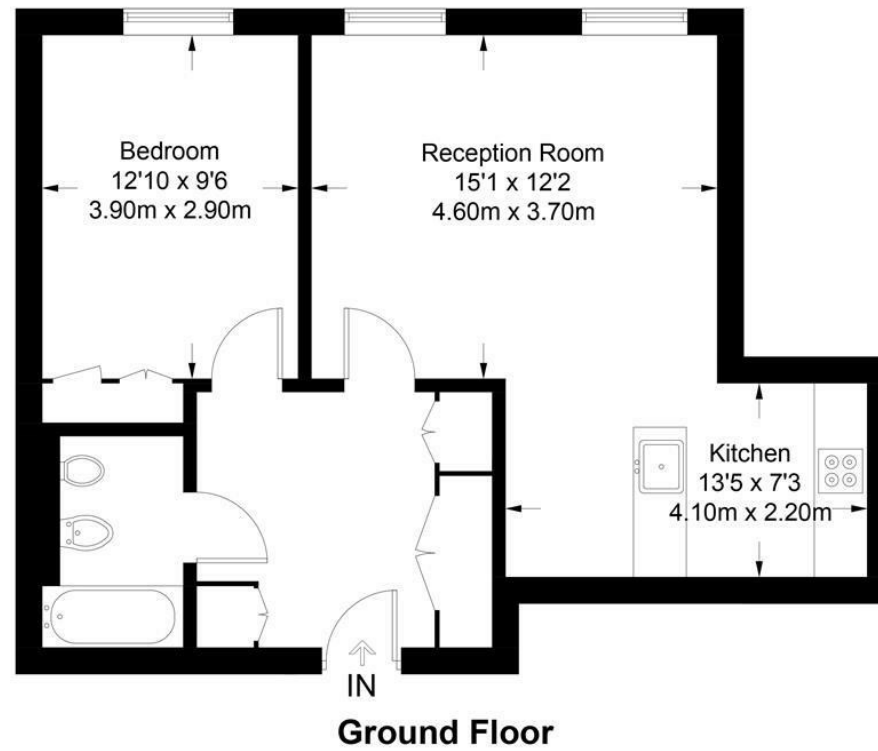
Minimum Term 6 Months
Deposit 5 Weeks
Council Tax Band G (London Borough of Westminster)
EPC Rating D (60)

- One Bedroom Apartment
- 592 Sq.Ft (55 Sq.M)
- Open Plan Reception Room
- Smart Fitted Kitchen
- Modern Bathroom
- Direct Views of Vincent Square
- 24 Hour Porter
- Furnished
- Close to Local Amenities Including Shops, Restaurants & Transport Links
- Walking Distance to Victoria, Pimlico, St James and Westminster



Vincent Square

Approximate Gross Internal Area = 592 sq ft / 55 sq m



Ground Floor

Not to scale, for guidance only and must not be relied upon as a statement of fact.
All measurements and areas are approximate only and have been prepared in accordance with the current edition of the RICS Code of Measuring Practice.

