



47 Marsham Street, Westminster  
London SW1P

GARTONJONES.COM





47 Marsham Street, Westminster  
London, SW1P

GARTON JONES.COM

49 Marsham Street Lettings:  
London +44 (0) 20 7340 0480  
SW1P 3DP westminster@gartonjones.com  
www.gartonjones.com

£1,650 Per Week

HMO Compliant- A spacious 3 double bedroom, split level apartment of approx.1940sq.ft (180.3sq.m), arranged over 3 floors of Romney House, a popular development located in the heart of Westminster. This beautifully presented and unique property has been refurbished throughout and further benefits from high ceilings, 3 bathrooms (2 en-suite), a lovely integrated kitchen/diner, a fun family room with guest cloakroom and direct access to the secure parking with a tandem space for 2 cars. There is ample storage including double height fitted wardrobes to the bedrooms, a laundry room and wood flooring. Residents have the use of a 24 hour concierge, a well-equipped gymnasium (online booking is required) with sauna and a treatment room and you will be very well located to local amenities and the surrounding area offers a variety of retail stores and restaurants. The University of Arts (UAL) is just a stones throw away and there is easy access (via public transport) to The London School of Economics (LSE) and King's College. The transport links of St James's Park, Pimlico, Westminster and Victoria are all within walking distance. The area has an abundance of amenities including Sainsbury's, Tesco, Waitrose, Marks & Spencer's and a Curzon Cinema plus following on from the extensive regeneration of Victoria street a selection of many new restaurants to compliment existing ones such as The Cinnamon Club and many more. Garton Jones are based on site for viewings.

\*Please note that some furniture may differ to these images and the apartment has been redecorated throughout \*\*

Council Tax Band G (London Borough of Westminster )  
Minimum Term 6 Months  
6 Weeks Deposit  
EPC Rating C (70)

- Stunning 3 Double Bedroom Apartment
- 1940 Sq.ft (180.3 Sq.m)
- 3 Bathrooms (2 En-Suite)
- Reception Room, Integrated Kitchen
- Family Room with Guest Cloakroom
- Secure Tandem Parking for 2 Cars
- 24 Hour Concierge
- Residents Gymnasium with Sauna & Treatment Room (\*online booking is required\*)
- Close to Local Amenities
- Walking Distance to St James' Park, Westminster & Victoria Transport Services

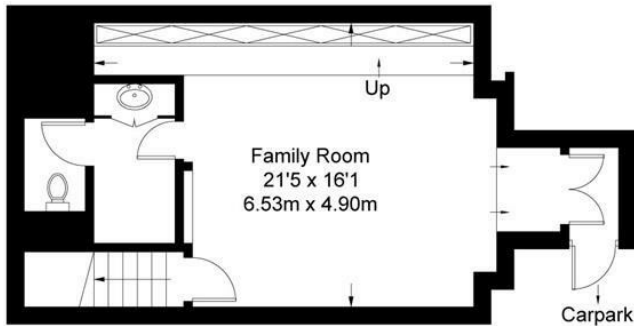


## Romney House

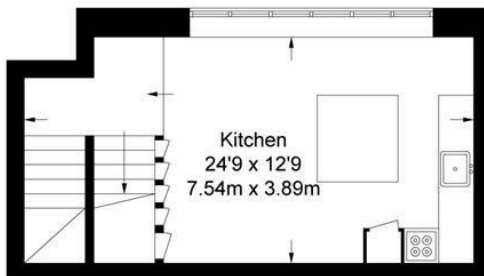
Approximate Gross Internal Area = 1485 sq ft / 138 sq m

Basement = 455 sq ft / 42.3 sq m

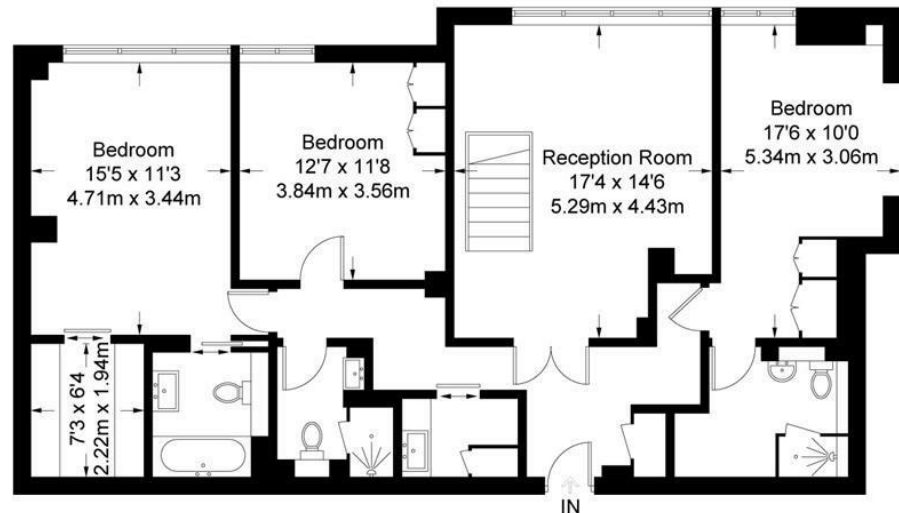
Total = 1940 sq ft / 180.3 sq m



Basement = 455 sq ft / 42.3 sq m



Lower Ground Floor = 316 sq ft / 29.4 sq m



Ground Floor = 1169 sq ft / 108.6 sq m

