



3 Abbey Orchard Street, Westminster
London SW1P

GARTONJONES.COM

3 Abbey Orchard Street, Westminster
London, SW1P

GARTON JONES.COM

49 Marsham Street Lettings:
London +44 (0) 20 7340 0480
SW1P 3DP westminster@gartonjones.com
www.gartonjones.com

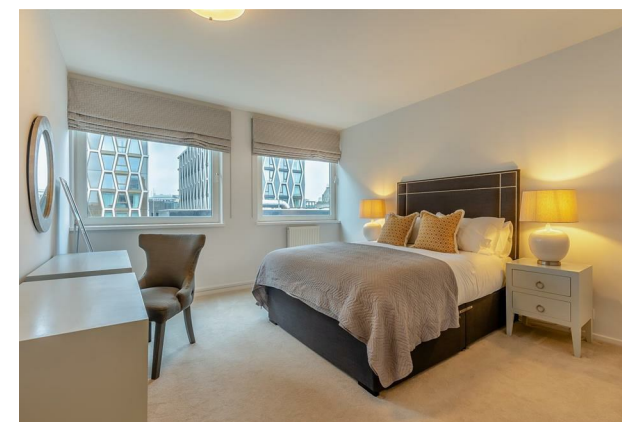
£1,050 Per Week

We are pleased to offer this beautifully presented two bedroom apartment available to let on the 7th floor (Lift) in Luke House which is a secure development located in the heart of historic Westminster. This property comprises of a reception room with a separate contemporary integrated kitchen, there are 2 double bedrooms with fitted wardrobes to the bedroom, 2 modern bathrooms (en-suite to master bedroom). Abbey Orchard Street is extremely convenient for access to many of the renowned local landmarks which include the Houses of Parliament, Westminster Abbey, Tate Britain and the River Thames. Local transport links are excellent and include St James's Park, Westminster and Victoria Station which also provides mainline UK services including the Gatwick Express as well as the underground services. The area has an abundance of amenities such as Sainsbury's, Waitrose, Marks & Spencer's and a Curzon Cinema plus following on from the extensive regeneration of Victoria street a selection of many new restaurants to complement existing ones.

**Please note that the furniture may differ to that shown in the current photos please internally view the property.

Council Tax Band G (London Borough of Westminster)
Term: 6 Months Minimum Term
6 Week Deposit
EPC Rating D (61)

- 2 Bedroom Apartment
- 7th Floor (Lift)
- 957 Sq. Ft (88.91 Sq. M)
- Integrated Modern Kitchen
- Reception Room
- 2 Bathrooms (1 En-Suite)
- Fully Furnished
- Communal Heating And Hot Water Included in The Rent
- Parking Available By Separate Negotiation
- Close To St James` Park and Westminster Underground Stations



GARTON JONES.COM



