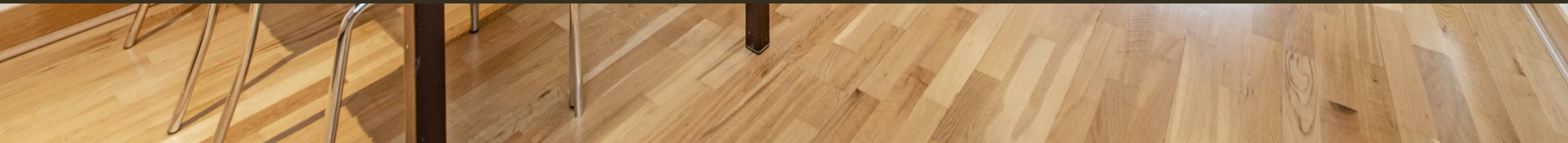




19 Page Street, Westminster
London SW1P

GARTONJONES.COM



19 Page Street, Westminster
London, SW1P

GARTON JONES.COM

49 Marsham Street Lettings:
London +44 (0) 20 7340 0480
SW1P 3DP westminster@gartonjones.com
www.gartonjones.com

£750 Per Week

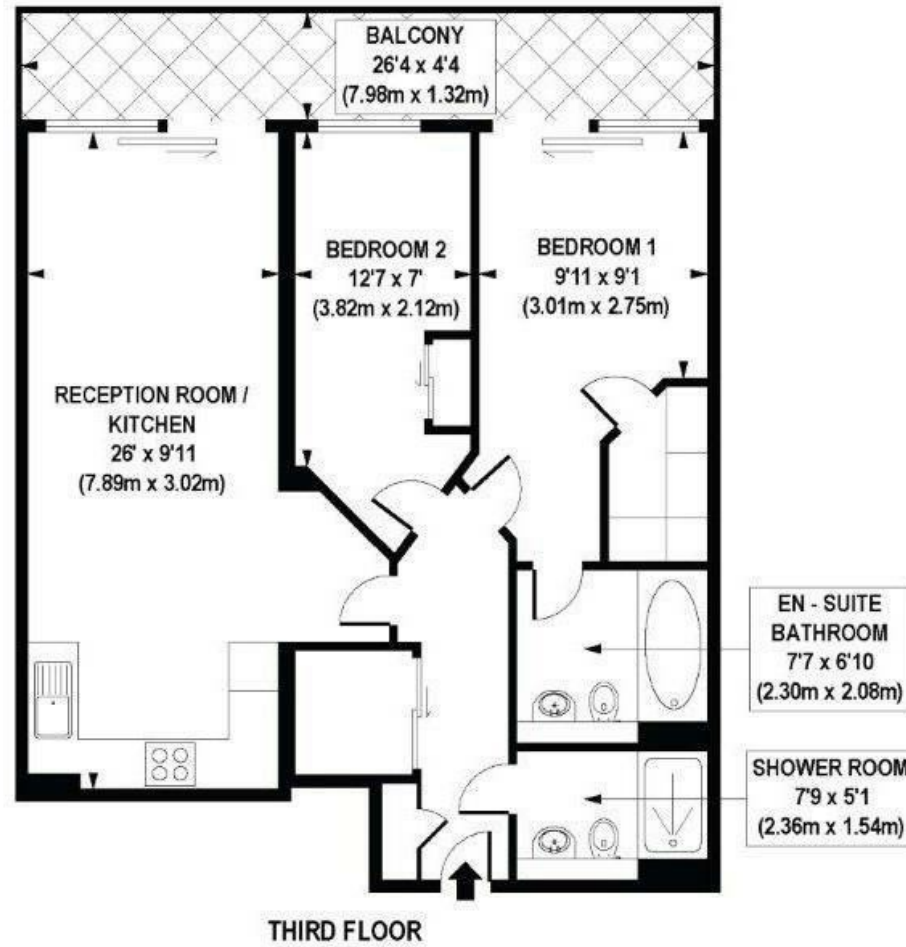
A bright and spacious 2 double bedroom apartment located on the 3rd floor of this popular modern development. This well presented property further benefits from an open plan reception room with integrated modern kitchen, access to a large private balcony, master bedroom with fitted wardrobe and an en-suite bathroom with shower over, further double bedroom and guest bathroom. Page Street is just a short walk from the renowned local landmarks which include the Houses of Parliament, Westminster Abbey and the Tate Britain Gallery. The local transport links of Victoria Station are nearby providing mainline UK services including the Gatwick Express as well as the underground services of Victoria, Pimlico, St James Park and Westminster. The area has an abundance of amenities in the immediate area and following on from the extensive regeneration of Victoria Street a selection of many new restaurants to compliment existing. Distinguished hotels like The Wellington, The Goring, St Ermins', The Westminster London (Curio Collection by Hilton) are all within very close proximity. There is easy access to universities such as Chelsea College of Arts, LSE and King's College.

Please note furniture may differ to that shown in the current photos.

Council Tax Band E (London Borough of Westminster)
Minimum Term 12 months
5 Weeks Deposit
EPC Rating B (83)

- 2 Bedroom Apartment
- 739 Square Feet (68 Sq.M)
- Open Plan Reception Room
- Modern Integrated Kitchen
- 2 Bathrooms (1 En-Suite)
- Secure Underground Parking (Under Separate Agreement)
- Close To The River Thames, Houses of Parliament & Tate Gallery
- Moments from Good Local Shopping Facilities
- St James` Park, Westminster & Pimlico Tube Services Within Walking Distance





APPROX. GROSS INTERNAL FLOOR AREA 739 sq. ft / 68.68 sq. m

