



75 Victoria Street, Westminster
London SW1H

GARTON JONES.COM



GARTON JONES
LONDON

75 Victoria Street, Westminster
London, SW1H

GARTON JONES.COM

49 Marsham Street Sales +44 (0) 20 7340 0480
London westminster@gartonjones.com
SW1P 3DP www.gartonjones.com

£925,000 Leasehold - Share of Freehold

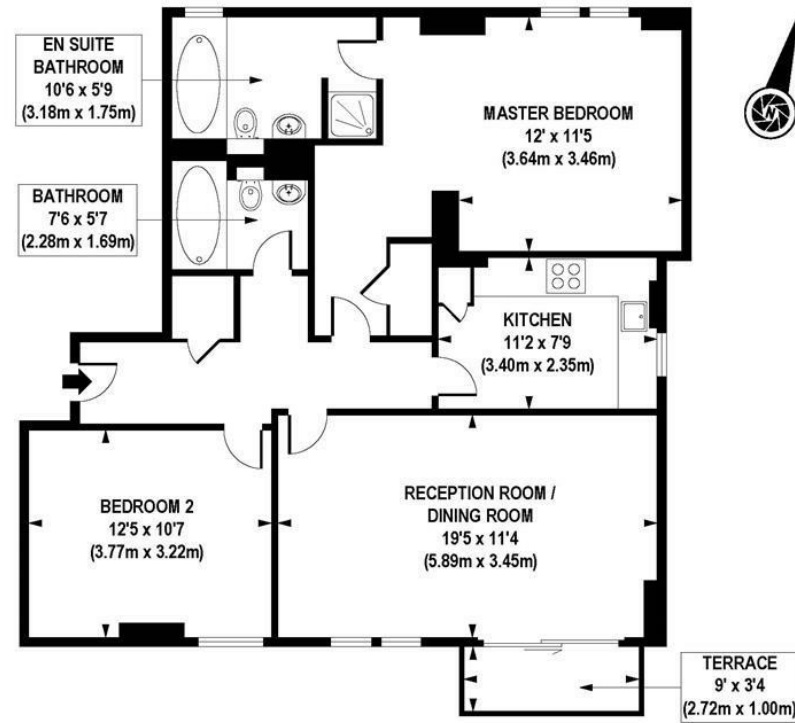
A bright and spacious 2 double bedroom apartment available for sale in this popular residential building located in the heart of Westminster. The accommodation comprises of approx. 895sq.ft (83.19 sq.m) and comprises of a reception room with floor to ceiling windows accessing a private balcony, there is a separate integrated kitchen, 2 bathrooms (1 en-suite), wood flooring to the living area and ample storage throughout. Residents benefit from a pretty courtyard with feature fountain and the use of a 24 hour concierge service. Artillery Mansions is set back behind gates and can be accessed via Greycoat Place and Victoria Street. You are surrounded by an array of iconic London attractions with 2 royal parks and Her Majesty The Queens' Palace. A plethora of hotels, eateries and retail shops which include The Goring, St Ermins', St James Conrad, The Ivy Victoria, Timmy Green, Aster and Flight Club and many more. You will have easy access to the transport links of St James's Park, Westminster and Victoria Station which offers a speedy train service to Gatwick Airport. The Houses of Parliament and River Thames are within easy reach. There is a tenancy in place producing

EPC Rating C (78)
Share of Freehold & Long Lease 999 years from 1 January 2000 expires 2999
Service Charges: £7,939.48 Per Annum (Including sinking fund)
Council Tax Band G (London Borough of Westminster)

- 2 Double Bedroom Apartment
- 895sq.ft (83.19 sqm)
- Reception Room
- Kitchen with Integrated Appliances
- 2 Bathrooms (1 En-Suite)
- Balcony
- Furnished
- 24 Hour Concierge
- Close to Local Shops, Bars & Restaurants
- Walking Distance to the Transport Links of Westminster, St James's Park & Victoria



EPC certificate available on request.



SIXTH FLOOR

APPROXIMATE GROSS INTERNAL AREA 895 sq. ft / 83.19 sq. m

