

Symonds
& Sampson

The Post House

Church Hill, Musbury, Axminster, Devon

The Post House

Church Hill
Musbury
Axminster
Devon EX13 8BA

A sizable historic dwelling offering great potential with large stone barn, former shop front, four bedrooms and additional store room.



- Former village post office
 - Grade II listed
- Large main reception room
- Downstairs en-suite bedroom
- Three first floor bedrooms
- Walled courtyard garden
 - 48 ft stone barn
 - EPC Exempt
 - Council Tax Band E

Guide Price £450,000

Freehold

Axminster Sales
01297 33122
axminster@symondsandsampson.co.uk



THE PROPERTY

The Post House is a most intriguing Grade II listed residential property set within the picturesque village of Musbury. The current arrangement offers more than 2500 sq ft of covered floor area over two floors including 700 sq ft in the adjoining barn, all offering great scope for imaginative buyers. For instance, parts of the building could be restored to commercial use, subject to planning consent.

ACCOMMODATION

The main entrance off Church Hill is into the Hall. With attractive period features still retained this is the oldest part of the property, thought to have been built circa 1780-90 as the living room of a small workers' cottage. From here one door leads to stairs to the first floor consisting of landing area (with access via ladder to the large insulated and part-over-boarded Loft) and accommodation of sitting room/lounge, plus three double bedrooms and a shower room.

Back in the hall, the other door leads to the ground floor of the main part of the property thought to have been built circa 1850. Here the Breakfast room offers ample space for all 4-person meals. Beyond and up a step is the all-electric kitchen with a range of wall and base units, and a window out to the courtyard garden. From the Breakfast room a sliding door leads to the rear porch with one door to a WC with hand-basin, and another out to the courtyard. Back in the breakfast room a second sliding door leads down a step to the former commercial areas of the building, where the potential wider uses of the property come to the fore.

The first room encountered is the former village shop and Post Office area now constituted as occasional Dining area for up to 8 people or more if required, with the end semi-screened off as a small Library

area. From the occasional dining area another sliding door leads down another step to what was the sorting office for the former Post Office operation. This part of the property was built circa 1910 and, already previously modernised, has recently been converted to a self-contained bedsit-bathroom suite. Beyond the bedsit suite is the 1970s-built Store room for the former shop and Post Office business. This is still used as a store room but has potential for conversion either to a garden room or to a Kitchen for the Bedsit suite. From the Store room a door on the right leads to the street outside, Combyne Road. A door on the left leads to the courtyard garden with a southerly aspect, currently part-paved and part-loose-gravelled and furnished with a wide range of potted plants. From the courtyard a heavy door leads into the Barn.

THE BARN

The front half has access to Combyne Road via a large sliding door and a smaller side-hinged door. This front area can accommodate two small cars. The rear half, part-screened-off, is arranged as a workshop area. Above is a small mezzanine floor for extra storage. Light and power outlets in front and rear

SERVICES

Mains electric, water and drainage. Oil fired central heating.
Broadband: Ultrafast available
Mobile Network Coverage: Limited indoors, likely outdoors. Source-Ofcom.org

SITUATION

The Post House is centrally located within the heart of the village and in walking distance of all local amenities. Musbury village has an active community supporting an ancient church, inn, petrol station with shop and post office, village hall and primary school. The small town of

Colyton (3 miles), with its beautiful Medieval Church is less than two miles away and offers a range of local shops and recreational amenities including a library and doctors' surgery whilst the bustling market town of Axminster (4 miles) offers all of the facilities one would expect, including supermarkets, independent shops, as well as recreational facilities and doctors' surgery. Axminster also boasts a well supported local market every Thursday. The larger market town of Honiton (11 miles) also offers a wider range of amenities and a twice weekly market. To the south is Lyme Bay, a dramatic stretch of the Jurassic Coast World Heritage site which features the popular resorts of Lyme Regis with its famous Cobb and sandy beach, as well as the coastal villages of Branscombe and Beer. There are good transport connections locally including a mainline railway station at Axminster and good road connections both east and west with the A35. The cathedral city of Exeter is easily accessible with its excellent shopping facilities, theatres, main line rail link to London Paddington, international airport and M5 access.

LOCAL AUTHORITY

East Devon District Council Blackdown House, Border Road, Heathpark Industrial Estate, Honiton, EX14 1EJ. Tel : 01404 515616. Council Tax Band E.

DIRECTIONS

What3words: ///flasks.otter.reverted

MATERIAL INFORMATION

The property has a very low yearly chance of flooding from rivers and sea, and a medium yearly risk from surface water.



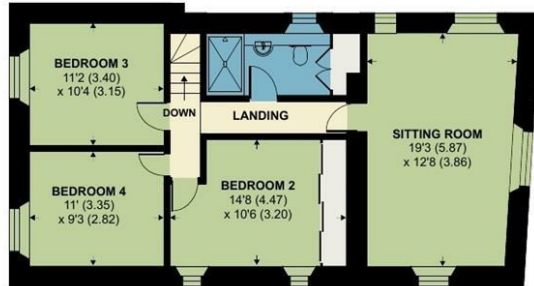
Church Hill, Musbury, Axminster

Approximate Area = 1847 sq ft / 171.5 sq m

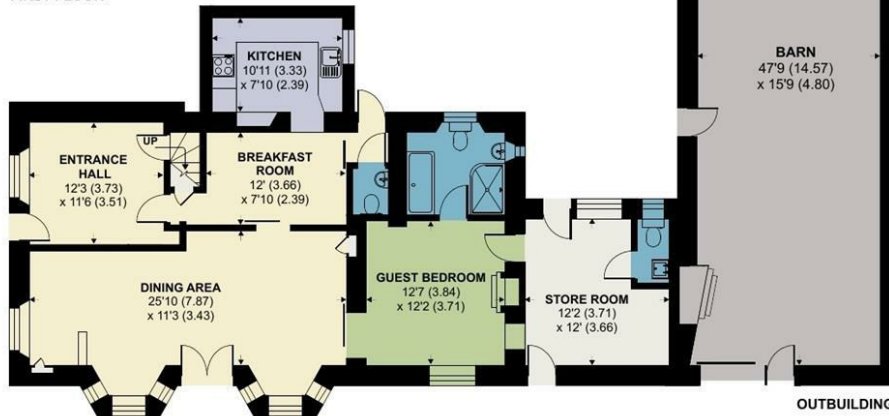
Outbuilding = 752 sq ft / 69.9 sq m

Total = 2599 sq ft / 241.4 sq m

For identification only - Not to scale



FIRST FLOOR



GROUND FLOOR



Certified
Property
Measurer

Floor plan produced in accordance with RICS Property Measurement Standards incorporating International Property Measurement Standards (IPMS2 Residential). © nitchcom 2023. Produced for Symonds & Sampson. REF: 1000320



Axm/RS/31.3.25



naea | propertymark
PROTECTED

www.
the
londonoffice.co.uk
40 ST JAMES'S PLACE SW1

01297 33122

axminster@symondsandsampson.co.uk
Symonds & Sampson LLP
, Trinity Square,
Axminster, Devon EX13 5AW



SALES | LETTINGS | AUCTIONS | FARMS & LAND | COMMERCIAL | NEW HOMES | PLANNING & DEVELOPMENT

Important Notice: Symonds & Sampson LLP and their Clients give notice that: 1. They have no authority to make or give any representations or warranties in relation to the property. These particulars do not form part of any offer or contract and must not be relied upon as statements or representations of fact. 2. Any areas, measurements or distances are approximate. The text, photographs and plans are for guidance only and are not necessarily comprehensive. It should not be assumed that the properties have all necessary planning, building regulation or other consents and Symonds and Sampson LLP have not tested any services, equipment or facilities. 3. We have not made any investigation into the existence or otherwise of any issues concerning pollution of the land, air or water contamination and the purchaser is responsible for making his/her own enquiries in this regard. 4. The property is sold subject to and with the benefit of all existing wayleaves, easements and rights of way whether public or private, specifically mentioned or not. The vendors shall not be required to define any such rights, privileges or advantages.